

Save the Date | Online Public Workshop

December 9, 2020

Managing our local groundwater sustainably in Tehama County



TEHAMA COUNTY

FLOOD CONTROL AND WATER CONSERVATION DISTRICT

The **Tehama County Flood Control and Water Conservation District** invites you to participate in an online, interactive public workshop to learn and share your thoughts about sustainable groundwater management planning efforts in Tehama County subbasins.

Why is this important?

California enacted the **Sustainable Groundwater Management Act (SGMA)** in 2014 to better manage our groundwater over the long term. SGMA requires that groundwater basins be managed by Groundwater Sustainability Agencies (GSAs), and GSAs must develop Groundwater Sustainability Plans (GSPs) that provide a detailed roadmap for reaching long-term sustainability. In Tehama County, the Flood Control and Water Conservation District serves as the GSA for subbasins within the County boundaries.

GSPs must assess groundwater conditions and articulate how groundwater management will avoid adverse impacts of groundwater overdraft. **Local groundwater users have the opportunity to inform how groundwater can be sustainably managed in Tehama County subbasins.**

What will be discussed?

- Brief review and updates on recent SGMA efforts in the County
- Overview of management planning areas and basin settings, specific to each subbasin (*refer to map on the following page*)

Wednesday
December 9
6:00-8:30 pm



**To attend the webinar,
sign up in advance:**

https://bit.ly/TehamaSGMAWebinar_Dec9

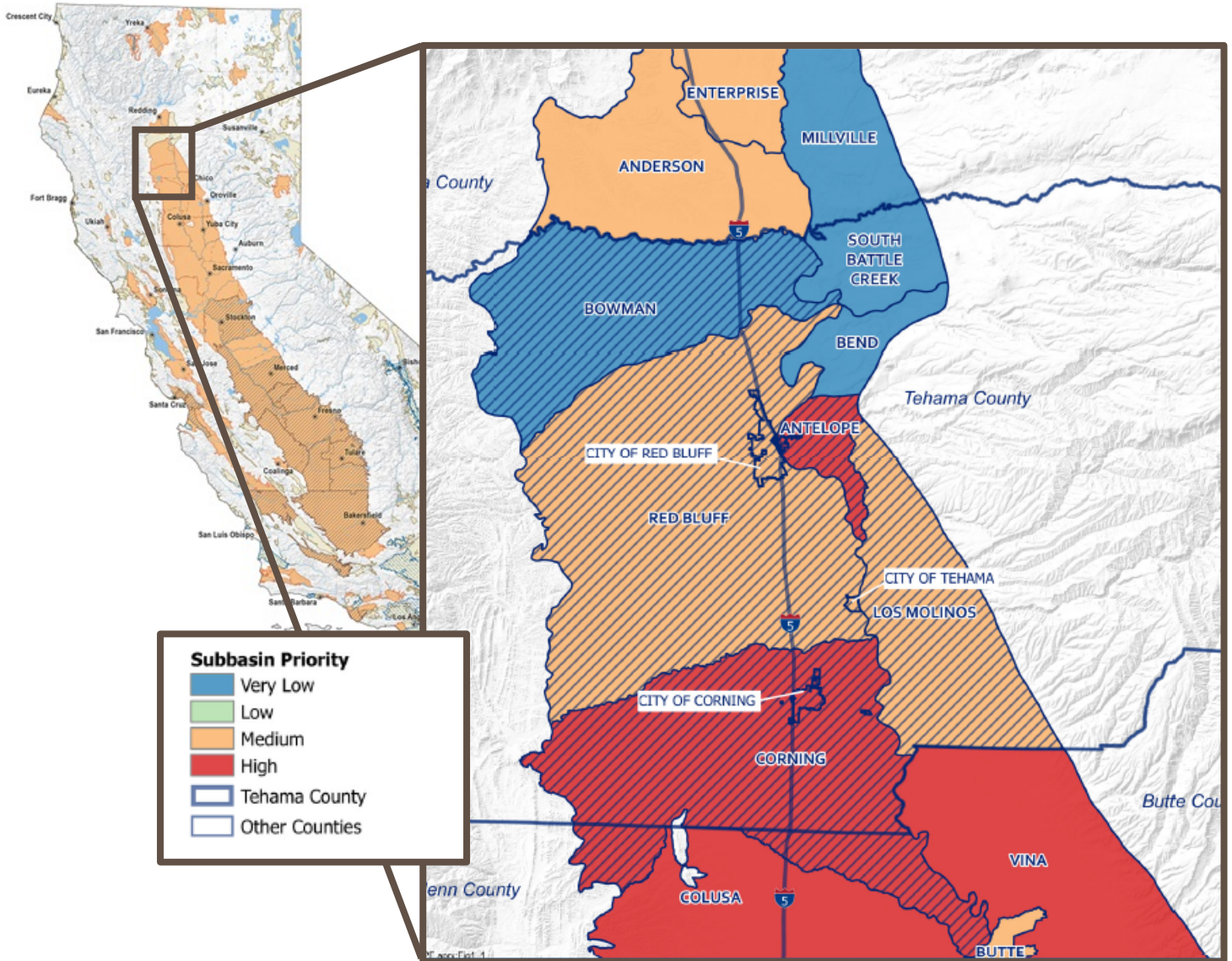
NOTE: When you register, you will receive a confirmation email that will include instructions on how to join the webinar, including dial-in-by-phone information.

The webinar will be recorded and posted to the District's website for future viewing.



Subbasins in Tehama County

Groundwater Sustainability Plans (GSPs) will be developed for five subbasins: Bowman, Red Bluff, Antelope, Los Molinos, and Corning. The Corning Subbasin extends into Glenn County, and the District is coordinating with the Corning Sub-basin GSA on a single GSP for the subbasin.



Want more information?

- Sign Up for the interested parties email list at nbethurem@tcpw.ca.gov
- Attend Groundwater Commission and District Board meetings. Meeting details are posted on the website
- Learn more about Tehama County subbasins and SGMA (<https://tehamacountywater.org/>)
- For information on the Corning Subbasin and Corning Subbasin GSP (<https://www.corningsubbasingsp.org/>)