

# Save the Dates | Online Public Workshops

## August 17, 19, 23, and 25

*Managing our local groundwater sustainably in Tehama County*



## TEHAMA COUNTY

FLOOD CONTROL AND WATER CONSERVATION DISTRICT

The **Tehama County Flood Control and Water Conservation District** invites you to participate in an online, interactive public workshop to learn and share input about sustainable groundwater management planning efforts in Tehama County subbasins.

### What will be discussed?

- Brief review and updates on recent SGMA efforts in the County
- Sustainable Management Criteria, specific to each subbasin (*refer to map on the following page*)
- Projects and Management Actions
- Public review schedule for the Draft GSPs

### Why is this important?

California enacted the **Sustainable Groundwater Management Act (SGMA)** in 2014 to better manage our groundwater over the long term. SGMA requires that groundwater basins be managed by Groundwater Sustainability Agencies (GSAs), and GSAs must develop Groundwater Sustainability Plans (GSPs) that provide a detailed roadmap for reaching long-term sustainability. In Tehama County, the Flood Control and Water Conservation District serves as the GSA for subbasins within the County boundaries.

GSPs must assess groundwater conditions and articulate how groundwater management will avoid adverse impacts of groundwater overdraft. **Local groundwater users have the opportunity to inform how groundwater can be sustainably managed in Tehama County subbasins.**

**Aug 17-25**  
6:00-7:30 pm



### Register to attend a basin-specific webinar:

- **Aug 17 | Bowman Subbasin**  
<https://bit.ly/SGMA-Aug17-Bowman>
- **Aug 19 | Red Bluff Subbasin**  
<https://bit.ly/SGMA-Aug19-RedBluff>
- **Aug 23 | Antelope Subbasin**  
<https://bit.ly/SGMA-Aug23-Antelope>
- **Aug 25 | Los Molinos Subbasin**  
<https://bit.ly/SGMA-Aug25-LosMolinos>

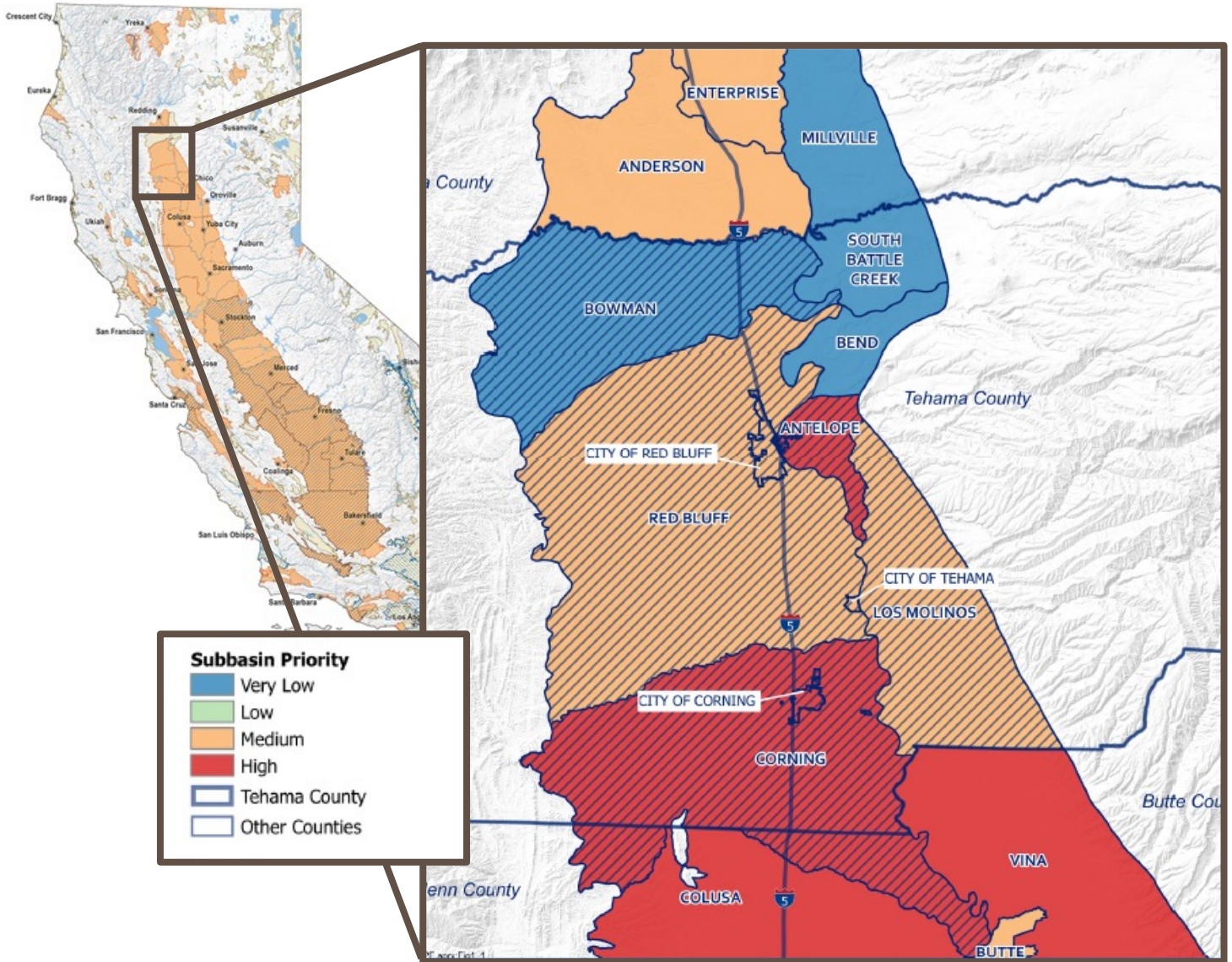
*NOTE: When you register, you will receive a confirmation email that will include instructions on how to join the webinar, including dial-in-by-phone information.*

*Webinars will be recorded and posted to the District's website for future viewing.*



# Subbasins in Tehama County

Groundwater Sustainability Plans (GSPs) will be developed for five subbasins: Bowman, Red Bluff, Antelope, Los Molinos, and Corning. The Corning Subbasin extends into Glenn County, and the District is coordinating with the Corning Sub-basin GSA on a single GSP for the subbasin.



## Want more information?

- Sign Up for the interested parties email list at [nbethurem@tcpw.ca.gov](mailto:nbethurem@tcpw.ca.gov)
- Attend Groundwater Commission and District Board meetings. Meeting details are posted on the website
- Learn more about Tehama County subbasins and SGMA (<https://tehamacountywater.org/>)
- For information on the Corning Subbasin and Corning Subbasin GSP (<https://www.corningsubbasingsp.org/>)
- En español: Si necesita solicitar alojamiento para asistir a un próximo evento, incluidos los servicios de traducción, comuníquese con Nichole Bethurem ([nbethurem@tcpw.ca.gov](mailto:nbethurem@tcpw.ca.gov))