



**Tehama County
Flood Control and Water
Conservation District**

TehamaCountyWater.org
CorningSubbasinGSP.org

Sustainable Groundwater Management Act (SGMA) & Tribal Engagement

April 6, 2021

Ryan Teubert

Groundwater Sustainability Agency (GSA) Project Manager

Presentation Overview

Background and context:

- Tribal lands
- SGMA 101
- Tehama County GSA

SGMA requirements related to Tribes

- + Resources

Opportunities for Tribal engagement

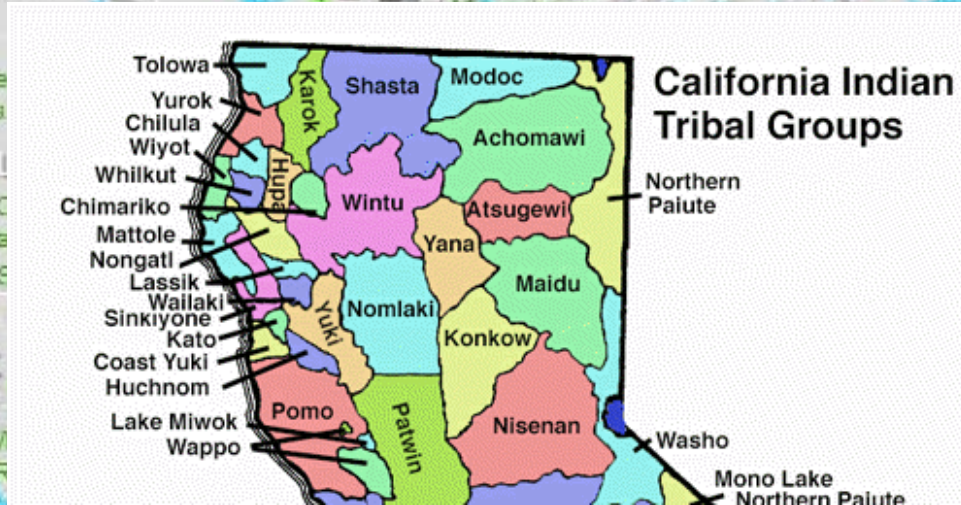
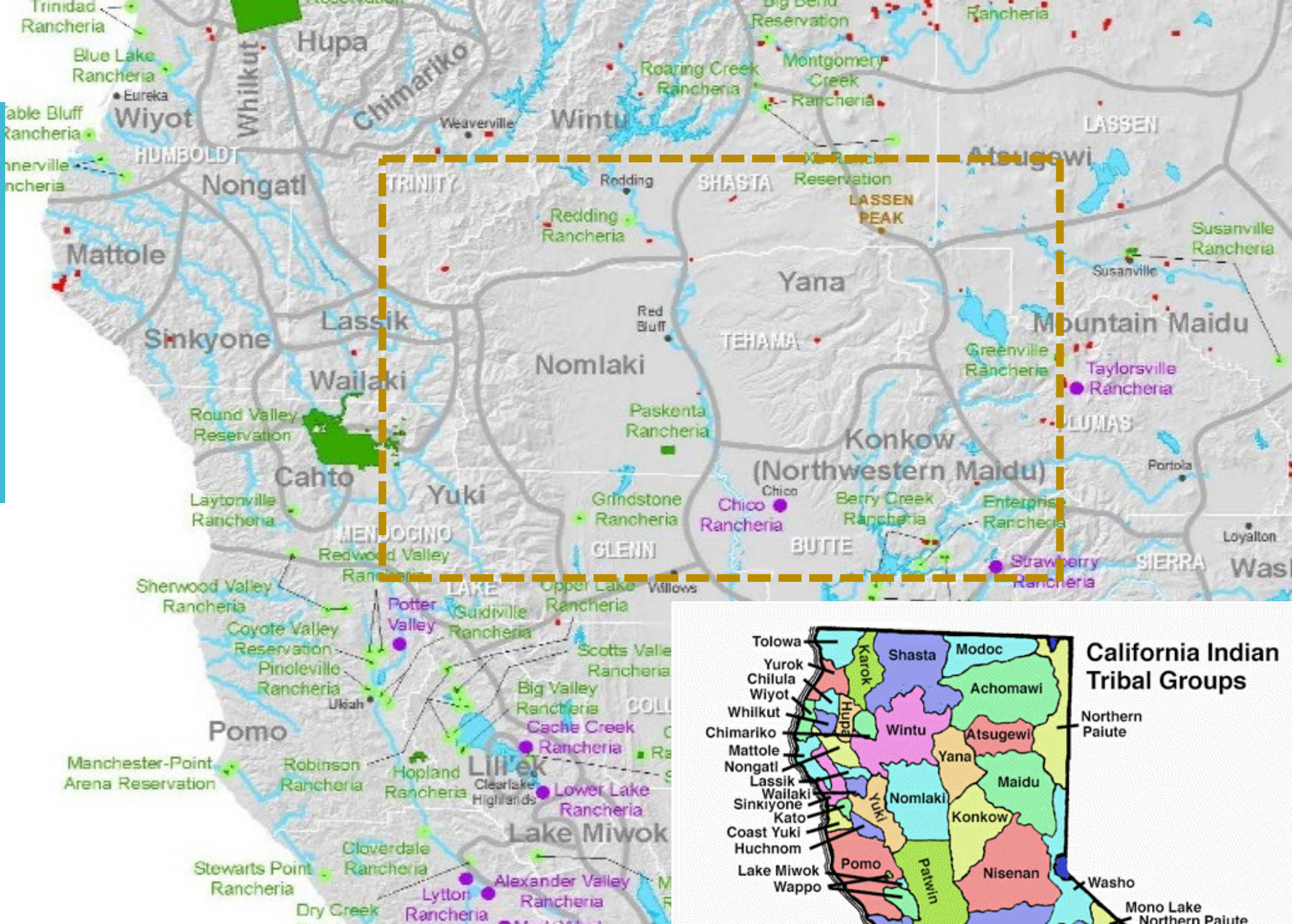
- Engagement options and forms
- Nearby examples
- GSP development & implementation

Groundwater Level Hydrographs and Maps

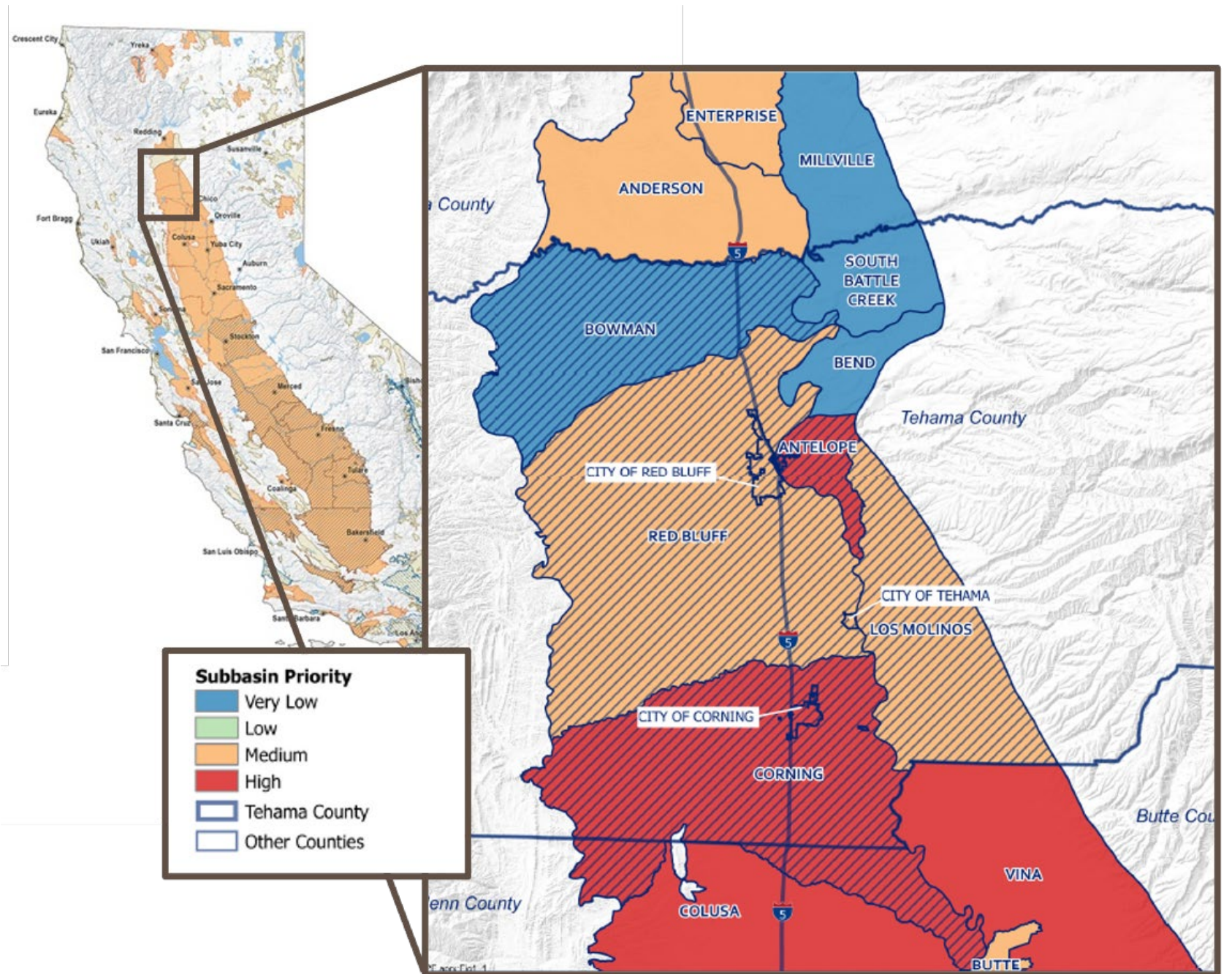
California Indian Tribal Homelands and Trust Land Map

Legend

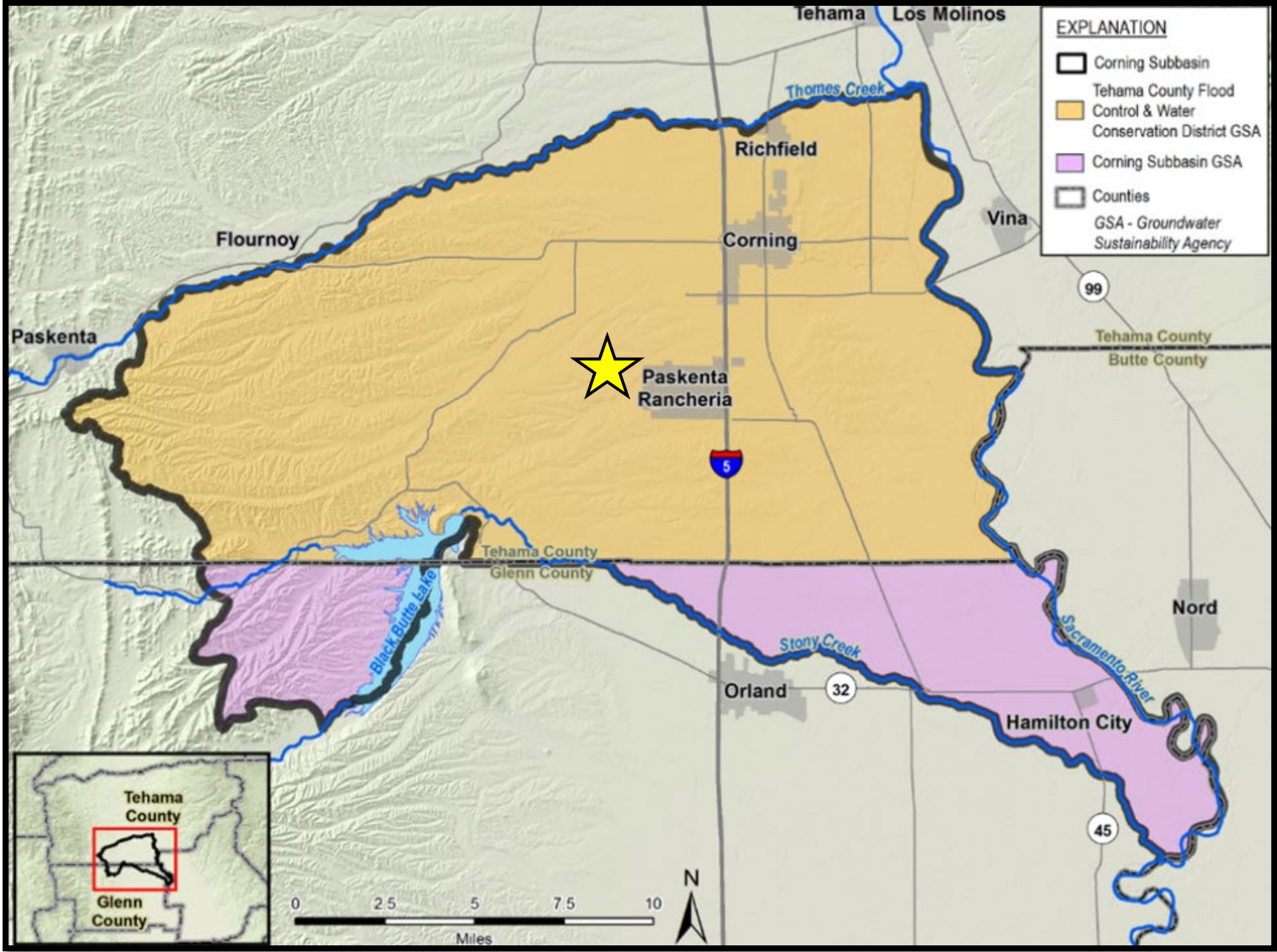
-  California Tribal/Cultural Areas
-  Indian land currently held in Trust by the United States Government.
-  Historical location of Indian land which was once held in Trust for a Terminated Tribe and/ or the location of a landless Federally Recognized Tribe.
-  Indian land currently held in Trust by the United States Government but resides in the Nevada or Arizona Jurisdiction.
-  Indian land currently held in Trust by the United States Government and known as a Public Domain Allotment.
-  Highlights smaller Reservation and Rancheria areas.



Groundwater Subbasins in Tehama County



Corning Subbasin



What is SGMA?



The Sustainable Groundwater Management Act (SGMA) -- law was passed in 2014



Values Local Control

Local responsible agencies = Groundwater Sustainability Agencies (GSAs)



Management plans = Groundwater Sustainability Plans (GSPs)



GSPs submitted to the State by January 31, 2022



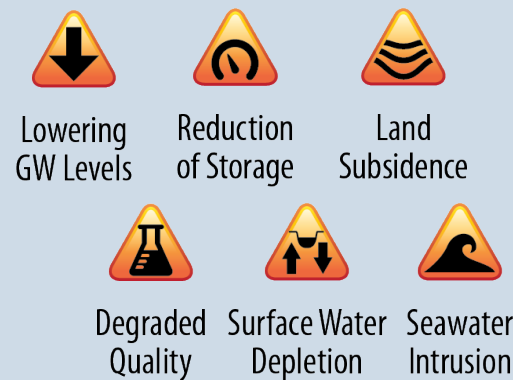
Sustainability must be achieved within 20 years (by 2042)

What is the purpose of SGMA?

- Promote sustainable management of groundwater basins
- Enhance local management of groundwater (State to step in if necessary)
- Improve data collection and understanding of groundwater resources and management
- Avoid or minimize undesirable results to groundwater



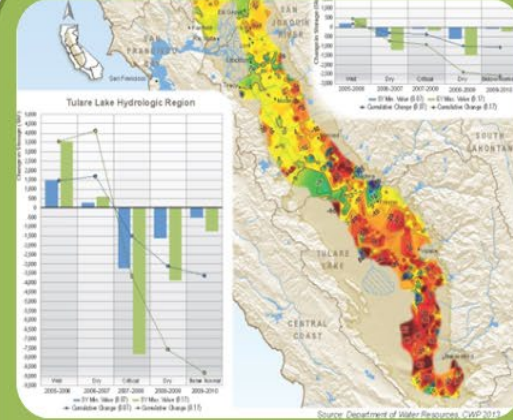
Undesirable Results



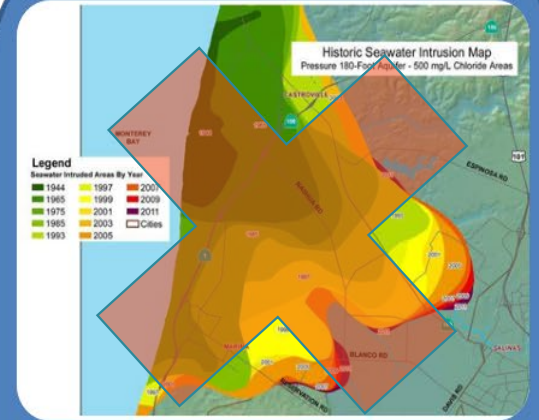
Sustainable Management Criteria



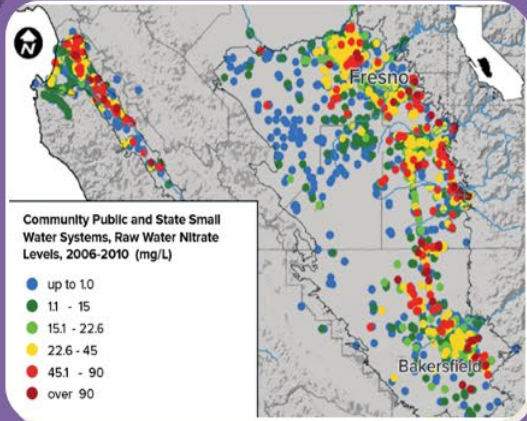
Lowering of GW Levels



Reduction of GW Storage



Seawater Intrusion



Degraded Water Quality



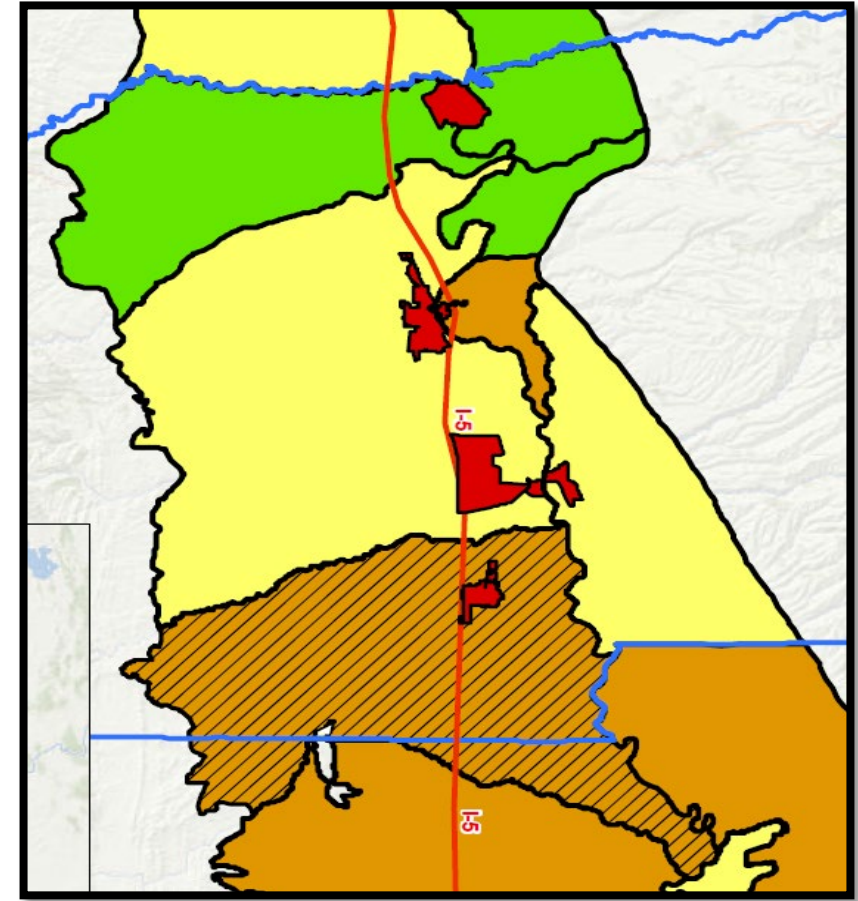
Land Subsidence



Depletion of Inter-connected Streams

Tehama County GSA Governance Structure

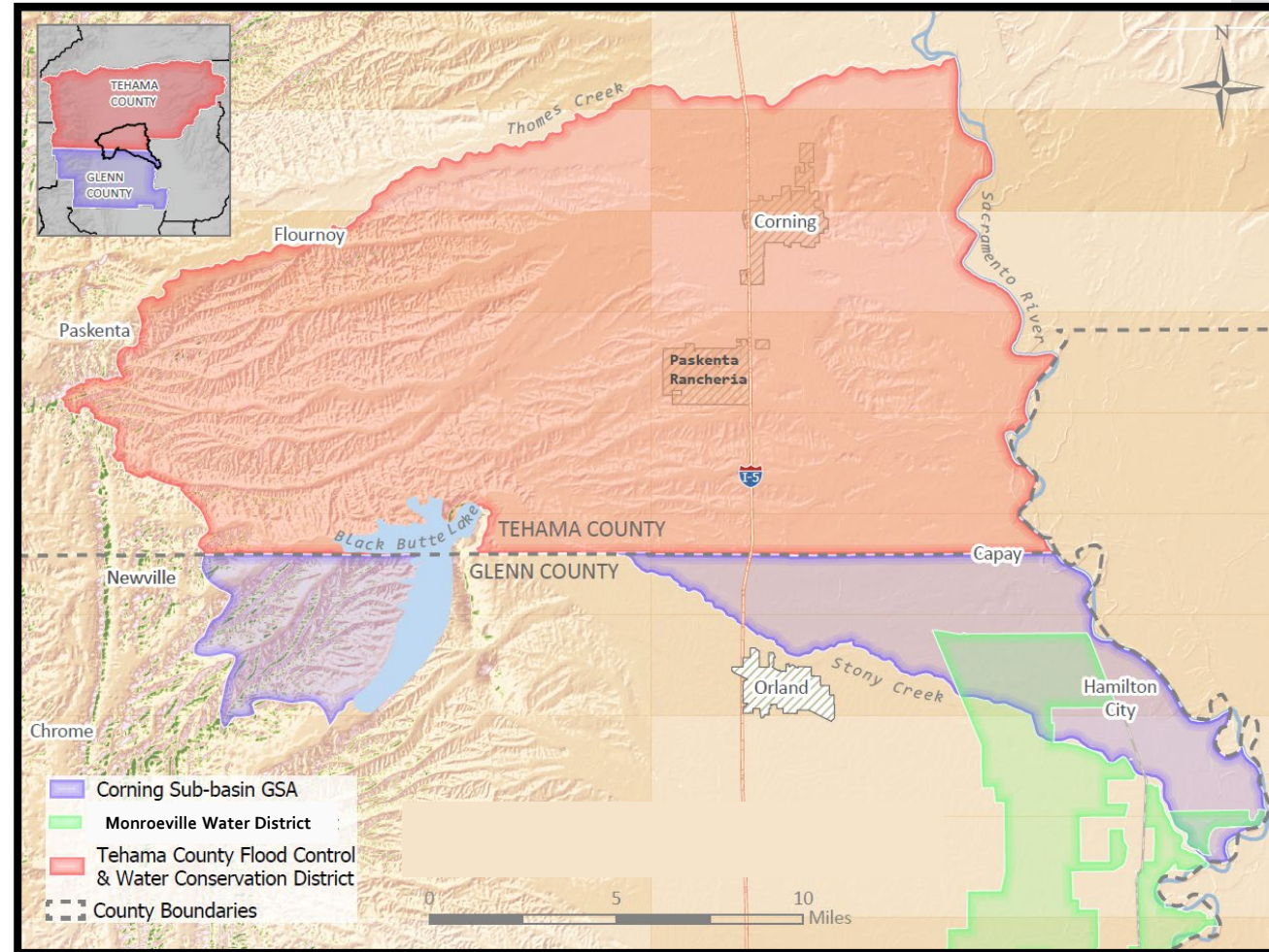
- **Governing Board** – Tehama County Flood Control & Water Conservation District Board of Directors (County Board of Supervisors)
- **Groundwater Commission**
 - The Commission is made up of 11 members
 - Six agencies will have designated seats on the Commission and appoint their own members.
 - 1 – City of Corning
 - 1 – City of Red Bluff
 - 1 – City of Tehama
 - 1 – El Camino Irrigation District
 - 1 – Los Molinos Community Services District
 - 1 – Rio Alto Water District
 - Five remaining Members are made up of representatives from County Supervisorial Districts



Corning Subbasin

- 2 GSA Agencies
- Co-Management of the Subbasin
- Develop 1 GSP
- Corning Subbasin Advisory Board (Tehama County Representatives)
 - Bob Williams
 - Dave Lester
 - Steven Grunwald
 - Ian Turnbull (alternate)

CorningSubbasinGSP.org



- All beneficial uses and users' interests
- State expects proactive outreach and good faith engagement
- Tribes may voluntarily agree to participate (cannot be compelled)
- Tribes are Sovereign Nations (Government-to-Government engagement required)

Key related requirements from CA Water Code

§ 10720.3

c) The federal government or any federally recognized Indian tribe, appreciating the shared interest in assuring the sustainability of groundwater resources, **may voluntarily agree to participate** in the preparation or administration of a groundwater sustainability plan or groundwater management plan under this part through a joint powers authority or other agreement with local agencies in the basin. A participating tribe shall be eligible to participate fully in planning, financing, and management under this part, including eligibility for grants and technical assistance, if any exercise of regulatory authority, enforcement, or imposition and collection of fees is pursuant to the tribe's independent authority and not pursuant to authority granted to a groundwater sustainability agency under this part.

Other Related Water Code References:

§ 10720.3, §10723.2, §10723.8

SGMA – Tribal Engagement Requirements

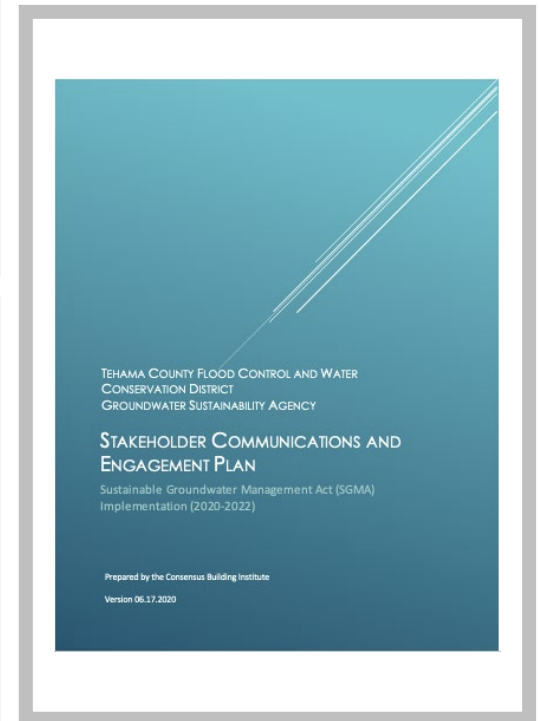
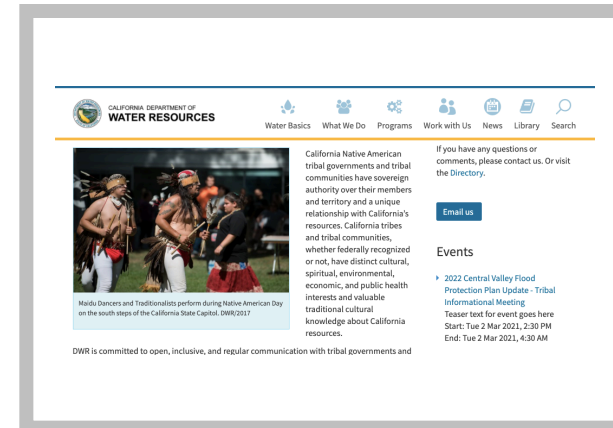
Resources

[Tribal Engagement Guidance Document](#)

[CA Dept of Water Resources Tribal Policy Advisor's Office](#)

[Corning Subbasin Communication & Engagement Plan](#)

[CorningSubbasinGSP.org](#)



GSA Meetings

- Flood Control and Water Conservation District Board meetings, 3rd Monday of each month at 11am.
- Groundwater Commission meetings, Fourth Wednesday of each month at 8:30am
- Corning Subbasin Advisory Board meetings, first Wednesday of each month at 1:30pm

Our Ongoing Engagement Goals



Build relationships and explore partnerships



Learn and understand each other



Improve how we work together



Build capacity and leverage opportunities



Ultimately create better groundwater sustainability plans

Joint Powers Authorities

Memorandums of Understanding (MOUs) or Memorandums of Agreement (MOAs)

Advisory groups

Formal government-to-government consultation

Presentations or briefings (can be informal)

Informal agreements or understandings

Interested Parties email list – meeting notices, important updates, quarterly newsletter

Engagement Options and Forms

Examples from nearby basins

Ex. 1: Informal Yet Actively Involved

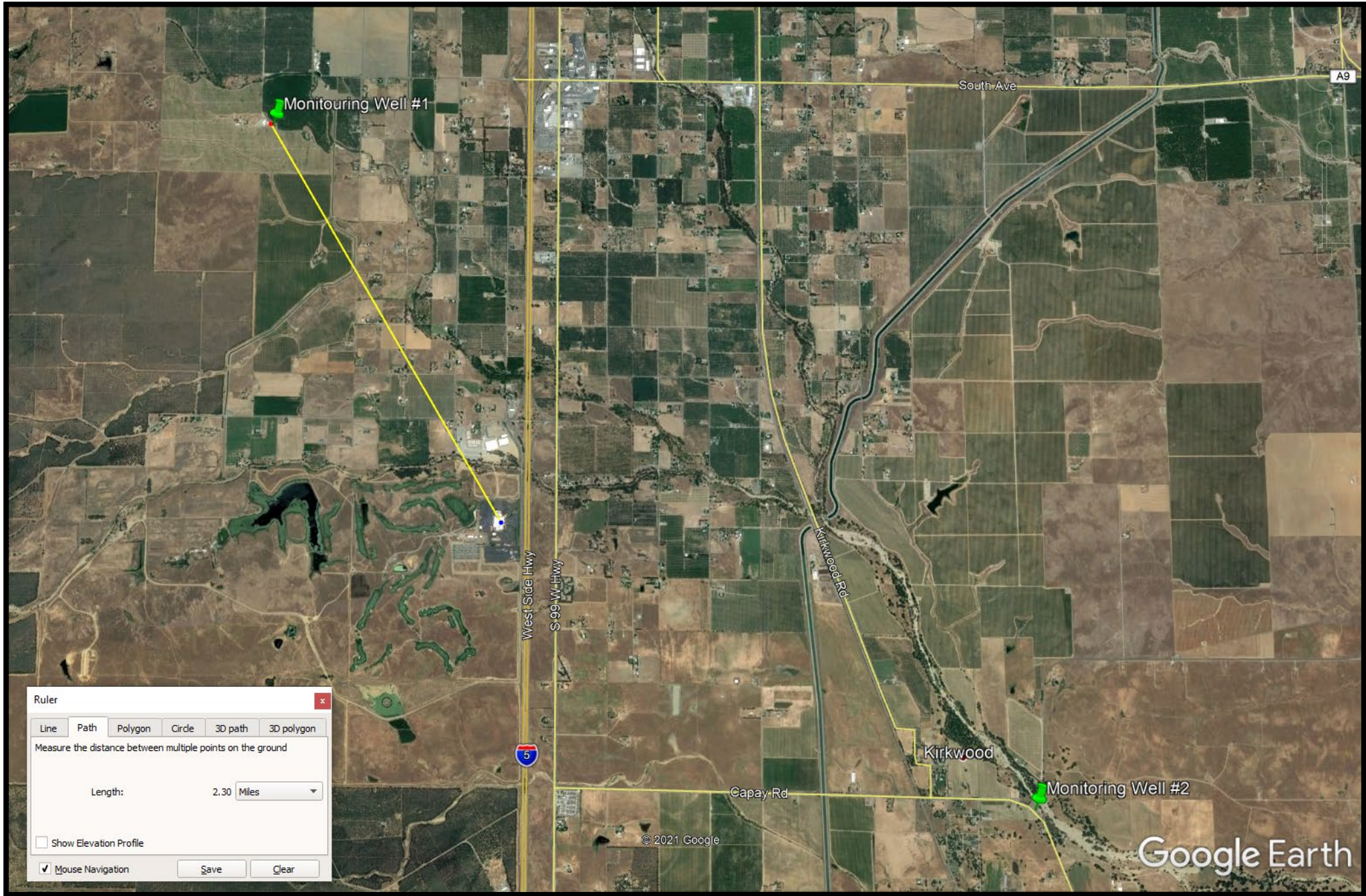
- GSA engaged Tribe early
- Offered to include Tribe in governance structure (JPA member and/or advisory committee)
- Tribe declined both (concerned with retaining sovereign authorities)
- Committed to building good relationship and information sharing for GSP development and implementation
- Designated staff member represents Tribe on SGMA activities, regularly attends advisory committee meetings as an observer and meets with GSA staff for information sharing

Ex. 2: Formal Communication Protocols

- Similar situation where Tribe chose to retain its right to exercise its inherent sovereign authorities
- Opted to formalize a good faith Communication Protocols MOU
- Includes commitment to 1) mutually exchange and disseminate information and 2) discuss and ensure full dialog around the information to understand and attempt to dispel discrepancies

SGMA Timeline





Ruler

Line Path Polygon Circle 3D path 3D polygon

Measure the distance between multiple points on the ground

Length: 2.30 Miles

Show Elevation Profile

Mouse Navigation

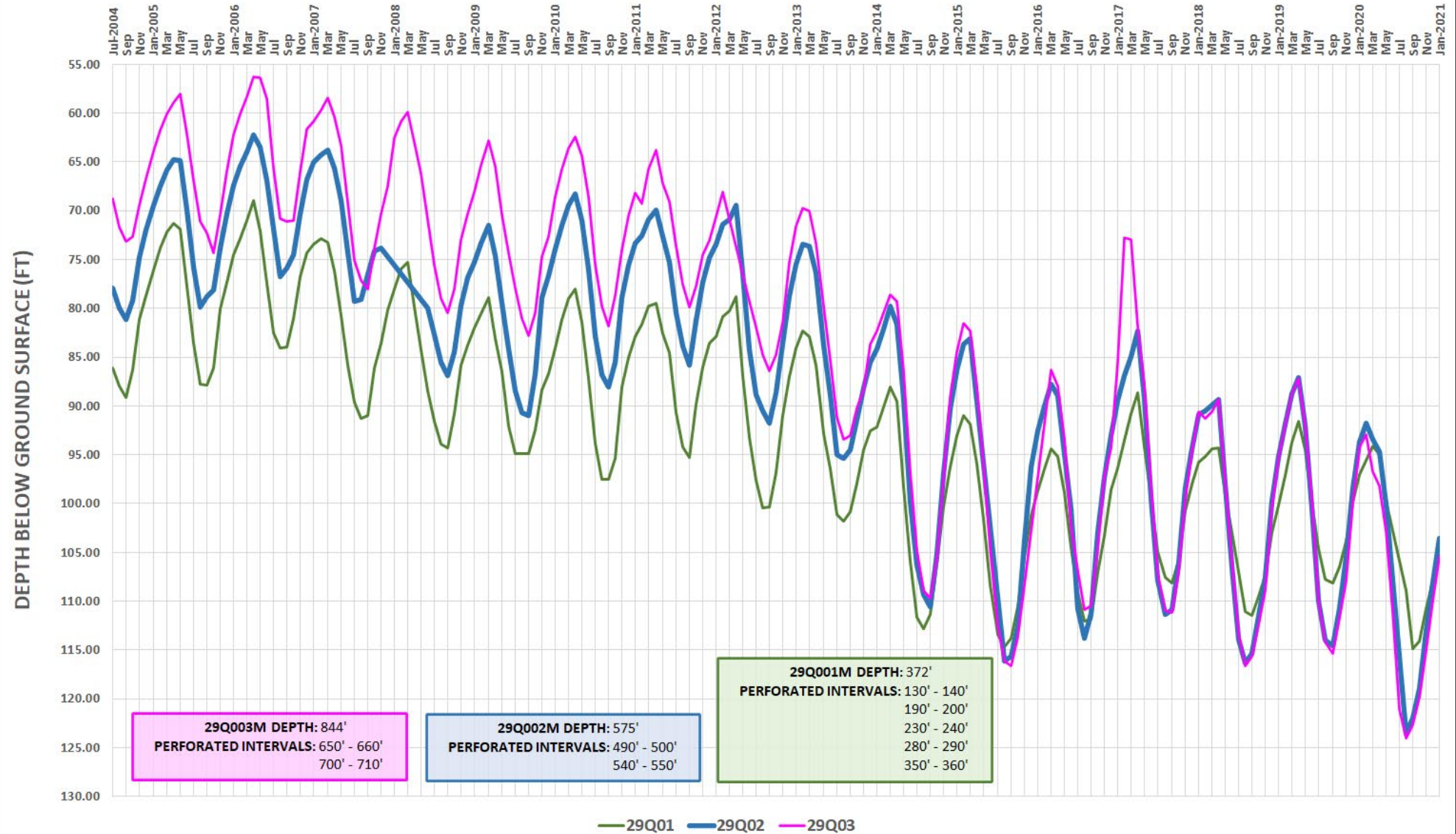
Save Clear

Google Earth

© 2021 Google

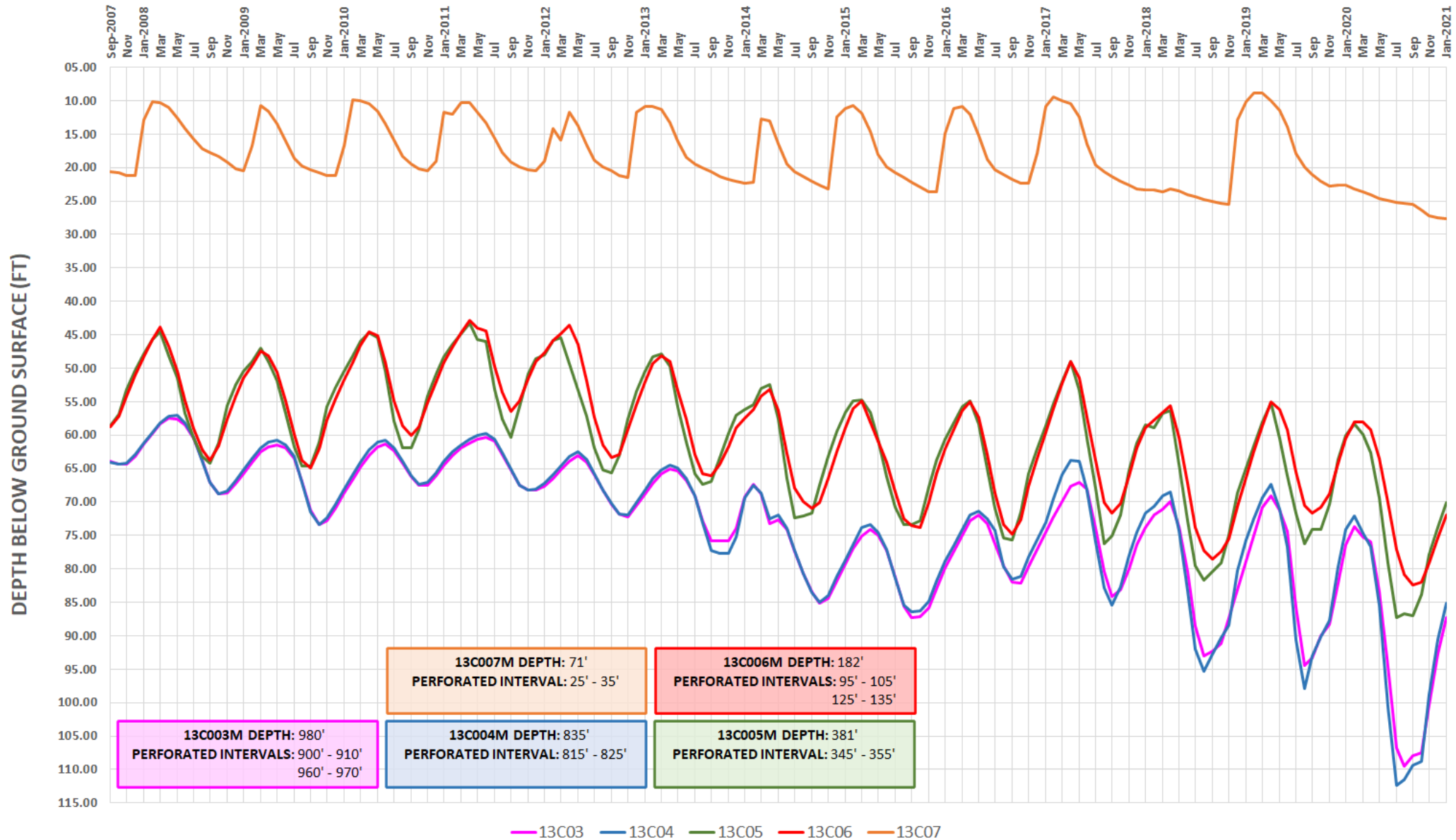
Monitoring Well #1

MT. SHASTA AVE - SOUTH OF CHITTENDEN AVE

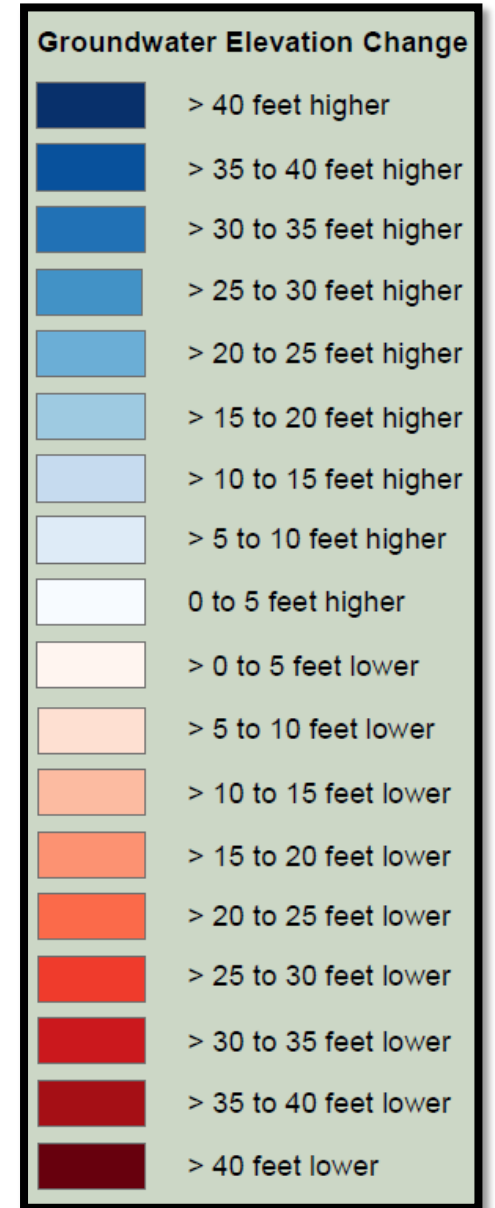
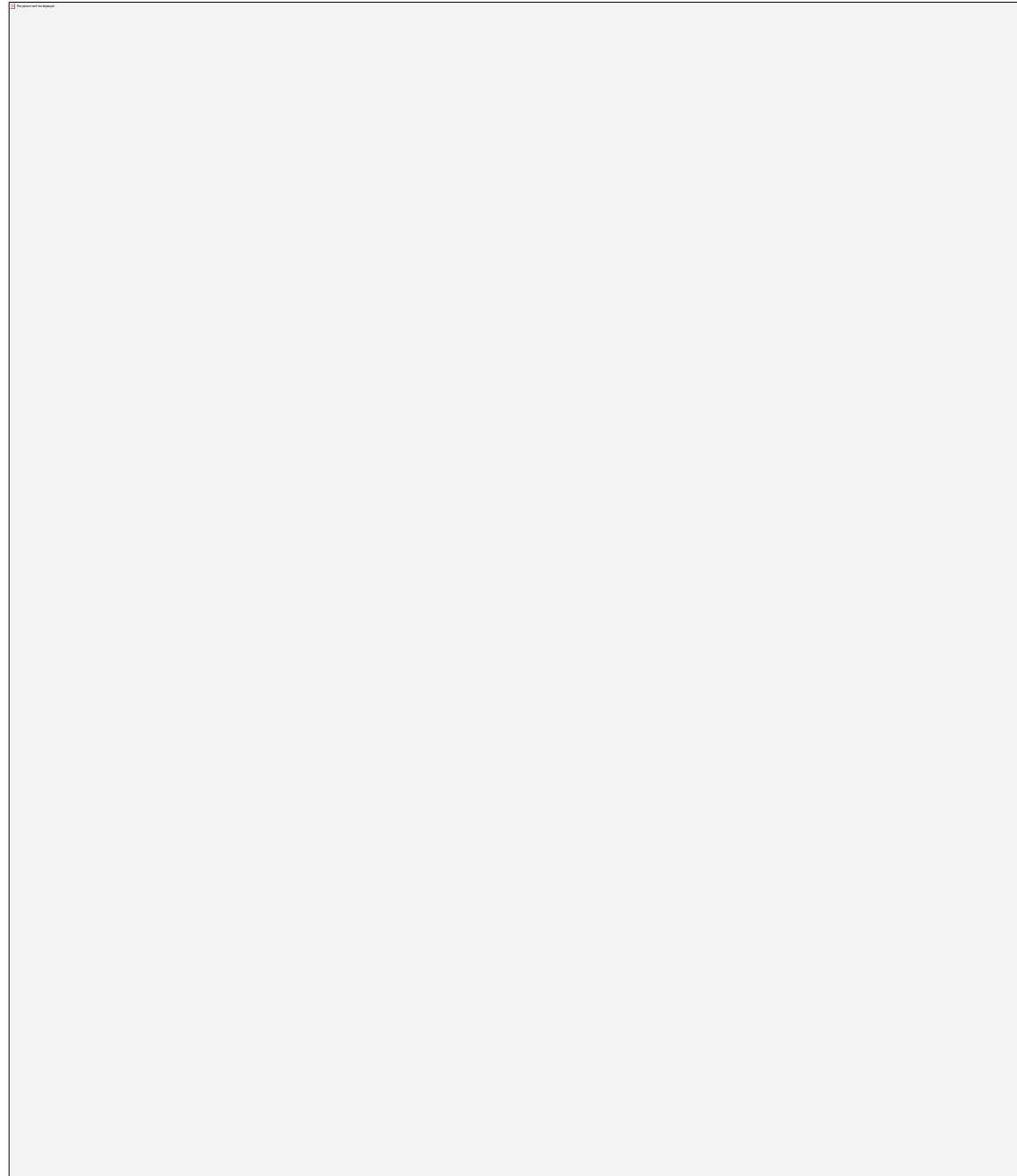


Monitoring Well #2

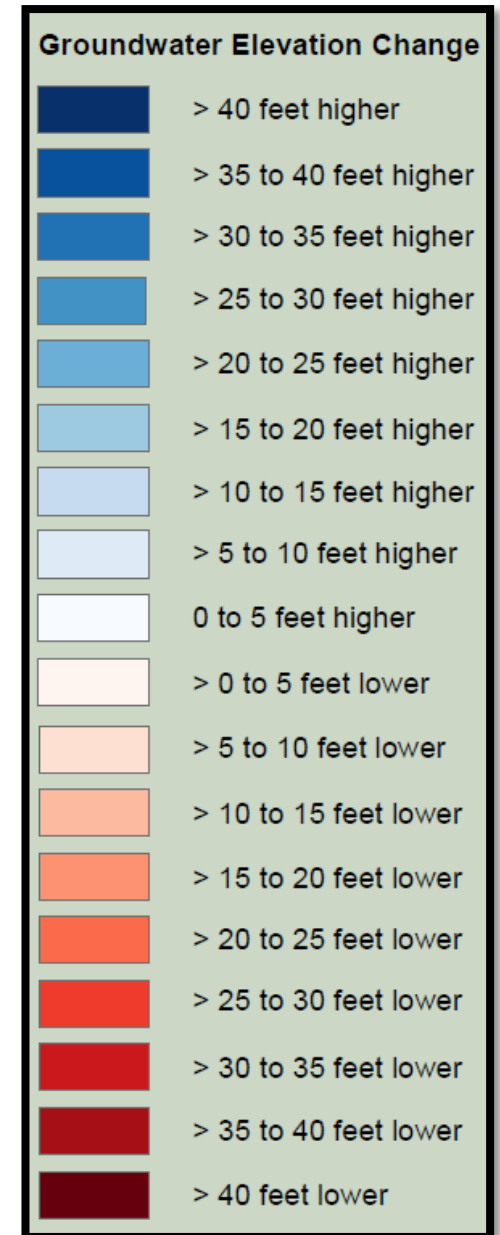
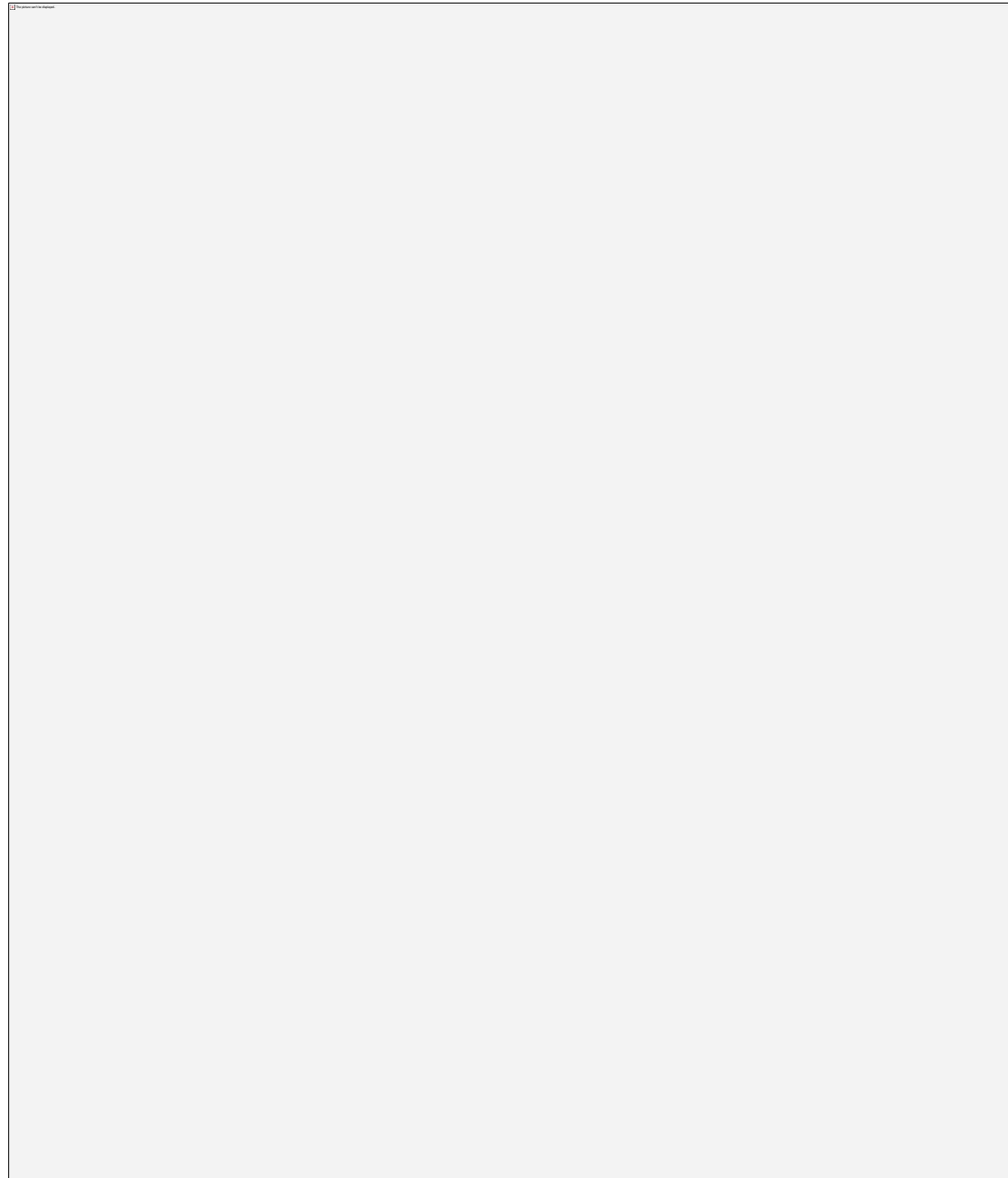
CAPAY ROAD @ HALL ROAD



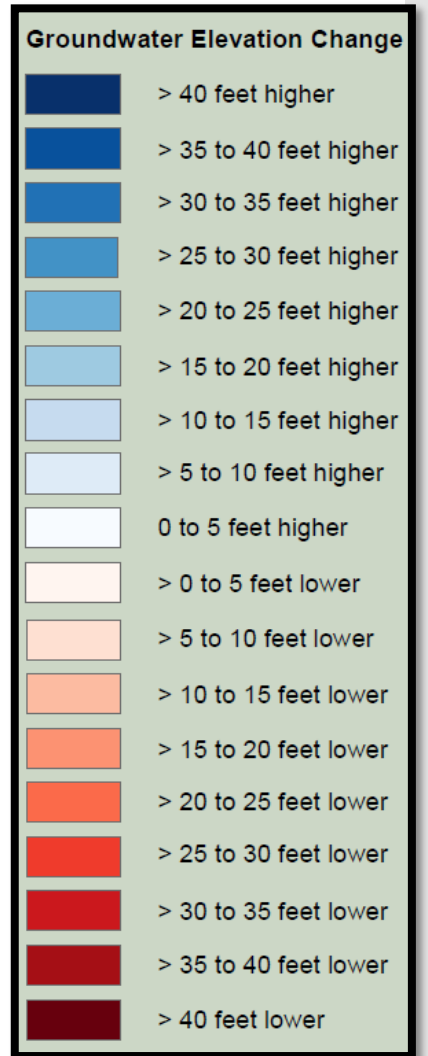
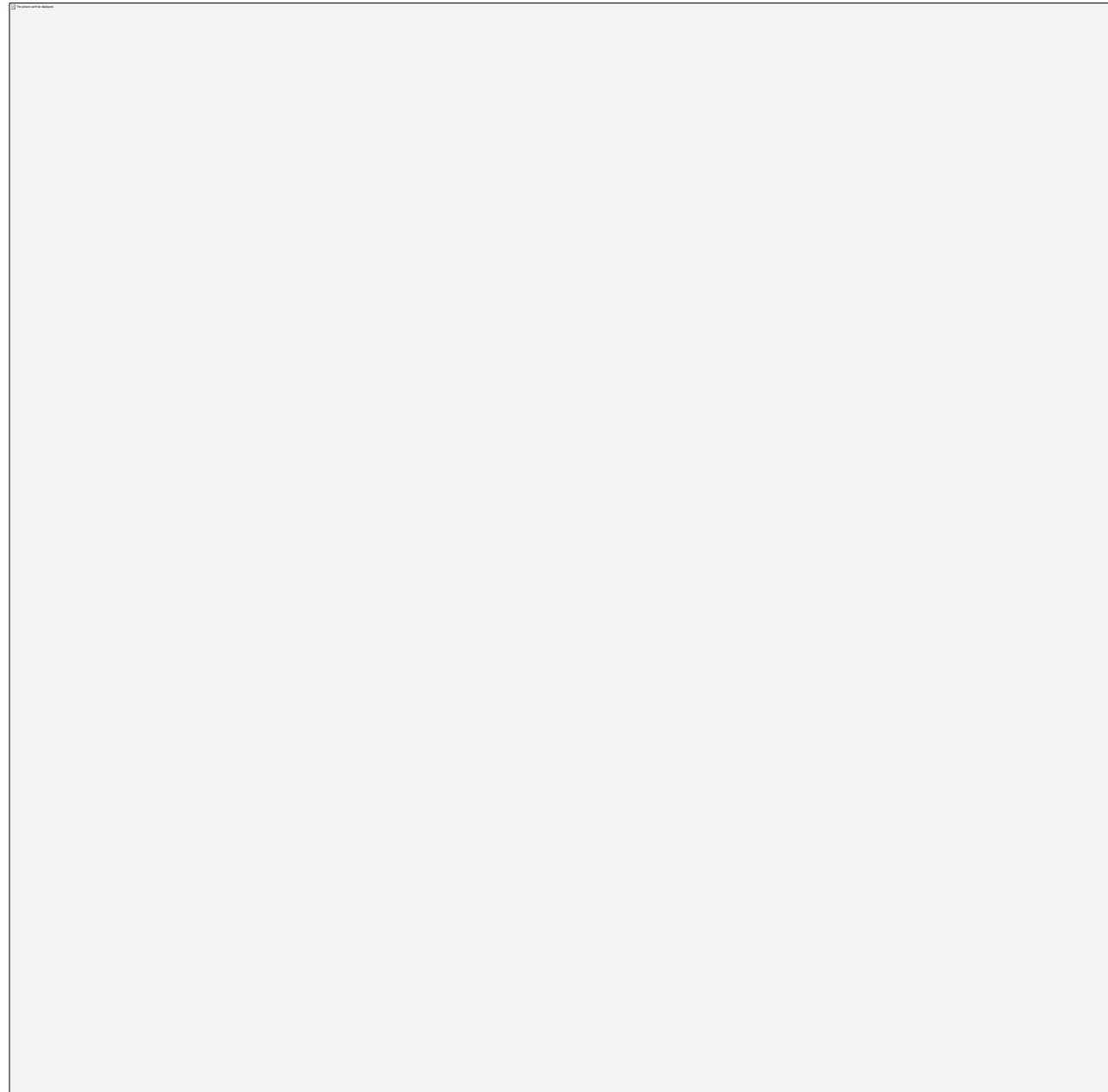
Change in Groundwater Levels for wells <200' bgs, from Spring 2004 to Spring 2020



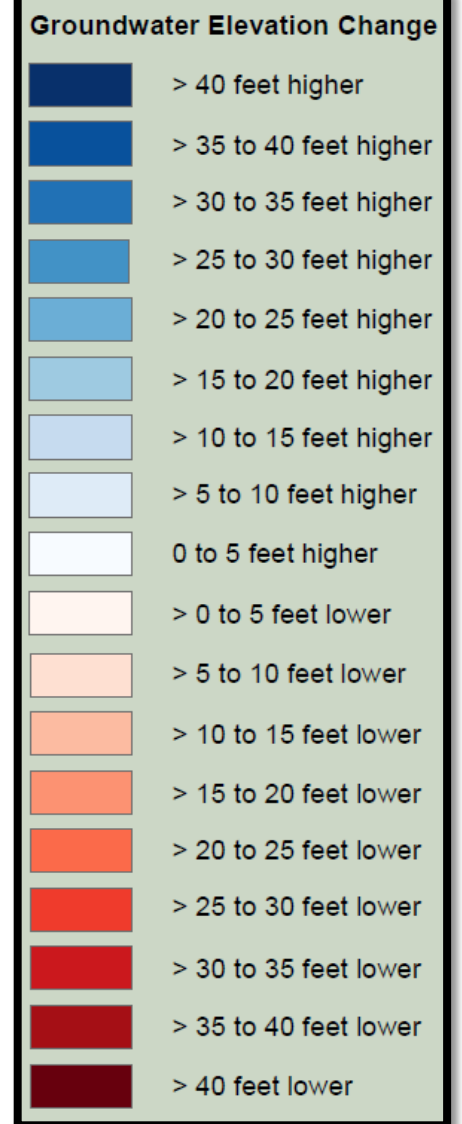
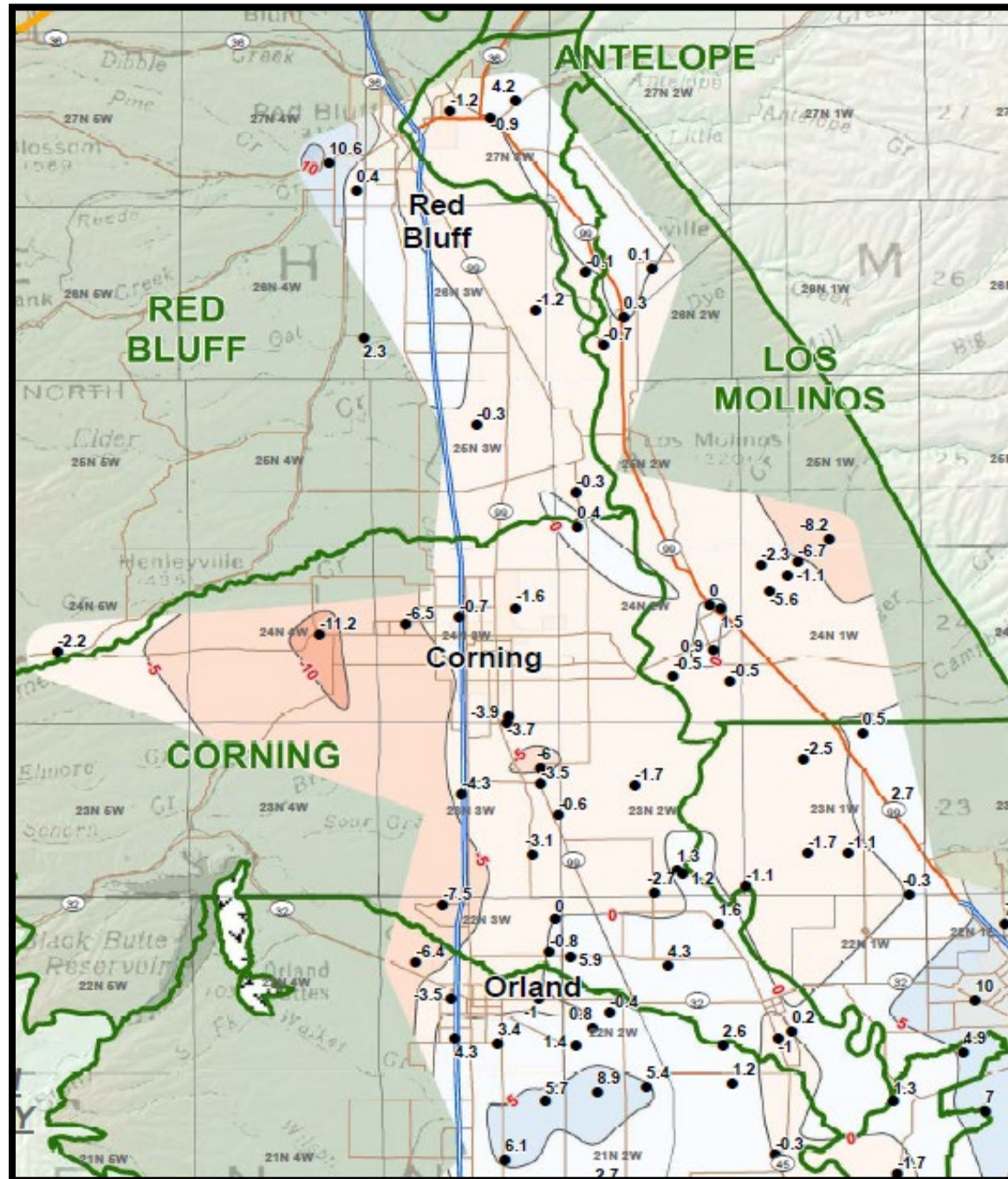
Change in Groundwater Levels for wells between 200'-600' bgs, from Spring of 2004 to Spring 2020



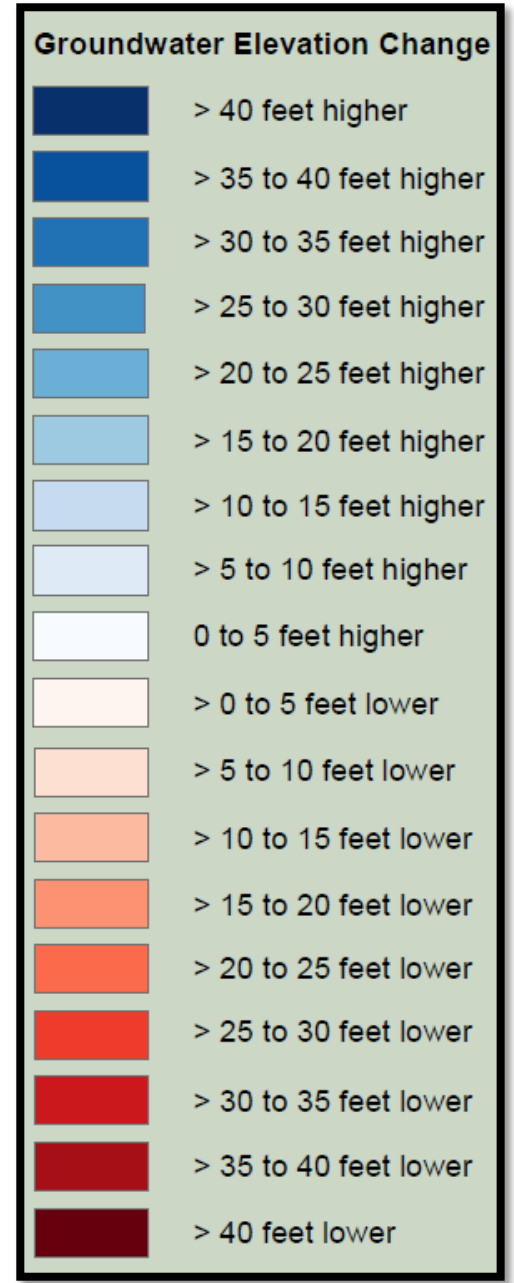
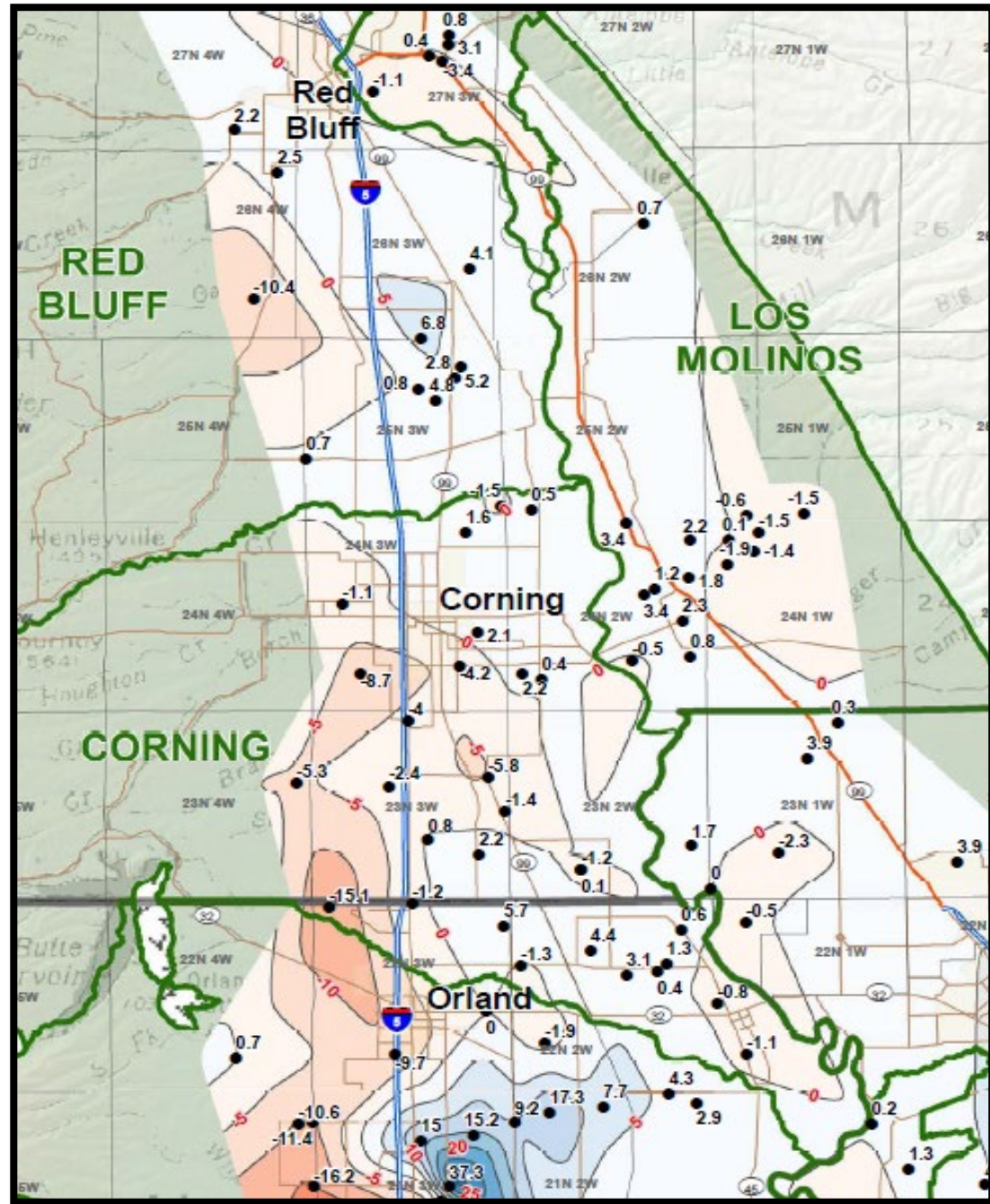
Change in Groundwater Levels for wells >600' bgs, from Fall 2004 to Fall 2020



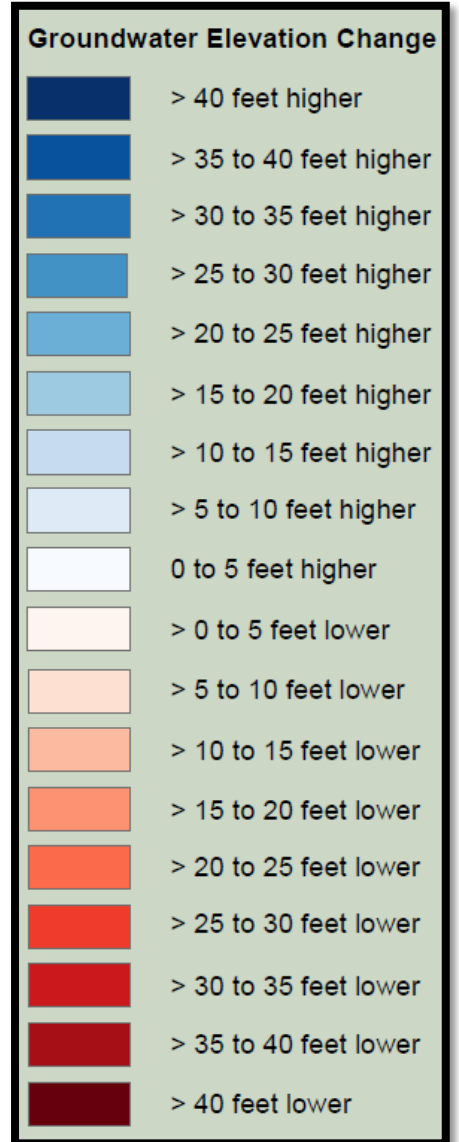
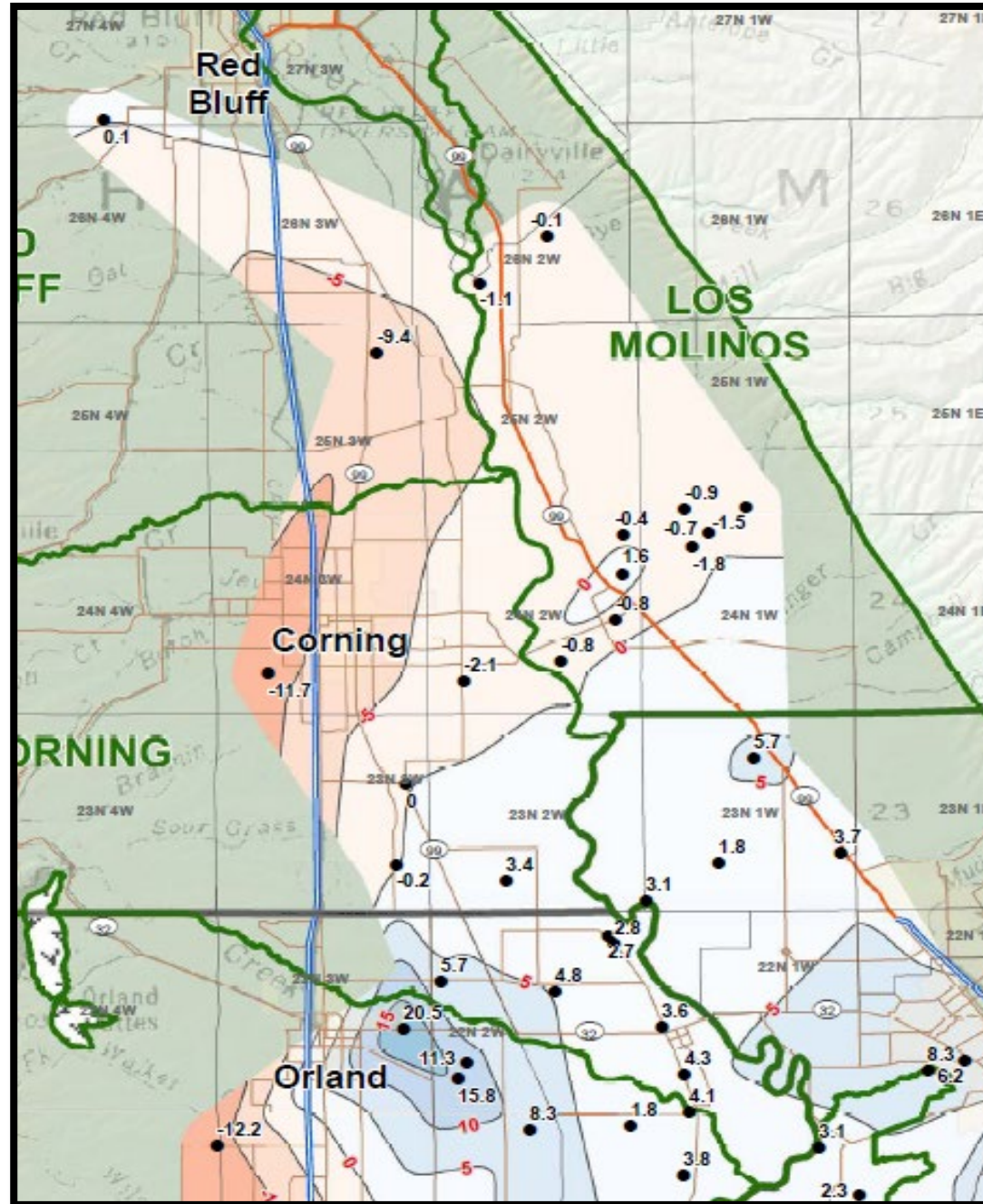
Change in Groundwater Levels for wells <200' bgs, from Spring 2015 to Spring 2020



Change in Groundwater Levels for wells between 200'-600' bgs, from Spring 2015 to Spring 2020



Change in Groundwater Levels for wells >600' bgs, from Spring 2015 to Spring 2020





TEHAMA COUNTY

FLOOD CONTROL AND WATER CONSERVATION DISTRICT

TehamaCountyWater.org

CorningSubbasinGSP.org

Thank you for your time!

How do you want to be engaged with SGMA implementation?

Subscribe to Interested Parties List

Contact Ryan Teubert: (rteubert@tcpw.ca.gov | (530) 385-1462 ext 3020