



Groundwater Sustainability Agencies (GSA) like the Tehama County Flood Control and Water Conservation District GSA (TCFCWCD GSA) and Corning Sub-basin GSA (CSGSA) are required under California's Sustainable Groundwater Management Act (SGMA) to achieve and maintain sustainable groundwater conditions by 2042. GSAs accomplish this by developing Groundwater Sustainability Plans (GSP) and implementing projects and management actions. Last year, the California Department of Water Resources (DWR) awarded a total of \$15 million across the Corning, Red Bluff, Los Molinos, and Antelope Subbasins to fund the GSAs' efforts to manage their GSPs, address data gaps, and carry out certain projects and management actions. This Newsletter provides an update on progress made by the GSAs and the consulting team headed by Luhdorff & Scalmanini Consulting Engineers (LSCE) to complete this grant-funded work by the grant's end date of March 2026.

Messages from the GSA Managers:

Winter of 22/23 was a much-needed boost to Tehama County's aquifers. Monitoring well data show things improved (as reflected in a decline in plastic tanks and water hauling). Last winter was at least average, but we're not out of the woods yet.

We know more dry years are likely coming, and we're using more groundwater than is being replenished. Everything's connected, and no one group is to blame. As surface water decreased, agriculture turned to pumping, and more homes built outside town (meaning more shallower, domestic wells). It's led to more mouths to feed, the very reason agriculture exists.

We all depend on water, and the area is flat out getting drier. There will be costs and sacrifices ahead, but they shouldn't fall on any single group. After all, nobody wants to live in a desert or be unable to make a living. It's time for the community to work together to find solutions. We all have a role to play in our future, so let's work together to fix it.

- **Justin Jenson**, Tehama County Flood Control and Water Conservation District GSA

The Corning Subbasin was fortunate to receive over \$8 million in grant funding to help us comply with SGMA and get started on several projects and management actions (PMAs). Groundwater recharge is critical to reach and maintain sustainable conditions in the Subbasin. This grant will assist in evaluating, planning, and piloting several recharge projects, which will be immensely helpful as we explore what types of groundwater recharge, which specific projects, and what water supplies could be used to augment groundwater recharge.

Collecting essential data and filling data gaps is of great importance for understanding the subbasin, its conditions, and for implementing PMAs. The grant includes funds for data collection and several compliance activities such as annual reporting and preparing for the periodic evaluation.

With this grant in place to supplement local fees, we are making significant progress toward activities we hope will have meaningful impacts on groundwater sustainability in the Corning Subbasin.

- **Lisa Hunter**, Corning Sub-basin GSA

GSP Revisions

On April 22, 2024, revised versions of the Corning, Red Bluff, Los Molinos, and Antelope GSPs (which were determined incomplete by DWR in October 2023) were submitted to DWR for their review. Among other updates, the revised GSPs each include commitments from the GSAs to develop Well Mitigation and Demand Management Programs (see more details below). DWR's determination letters and the revised GSPs are available on DWR's SGMA portal: <https://sgma.water.ca.gov/portal/gsp/status>. DWR's determination on the revised GSPs is anticipated by the end of 2024.

Next Steps for the Development of Demand Management and Well Mitigation Programs

For the Red Bluff, Los Molinos, and Antelope Subbasins, TCFCWCD approved resolutions for Demand Management and Well Mitigation Programs to be developed and put in place by January 1, 2026. A committee of representatives



from the Tehama County Groundwater Commission for each Program have been formed to develop recommendations for the development of those programs with input from a publicly convened working group.

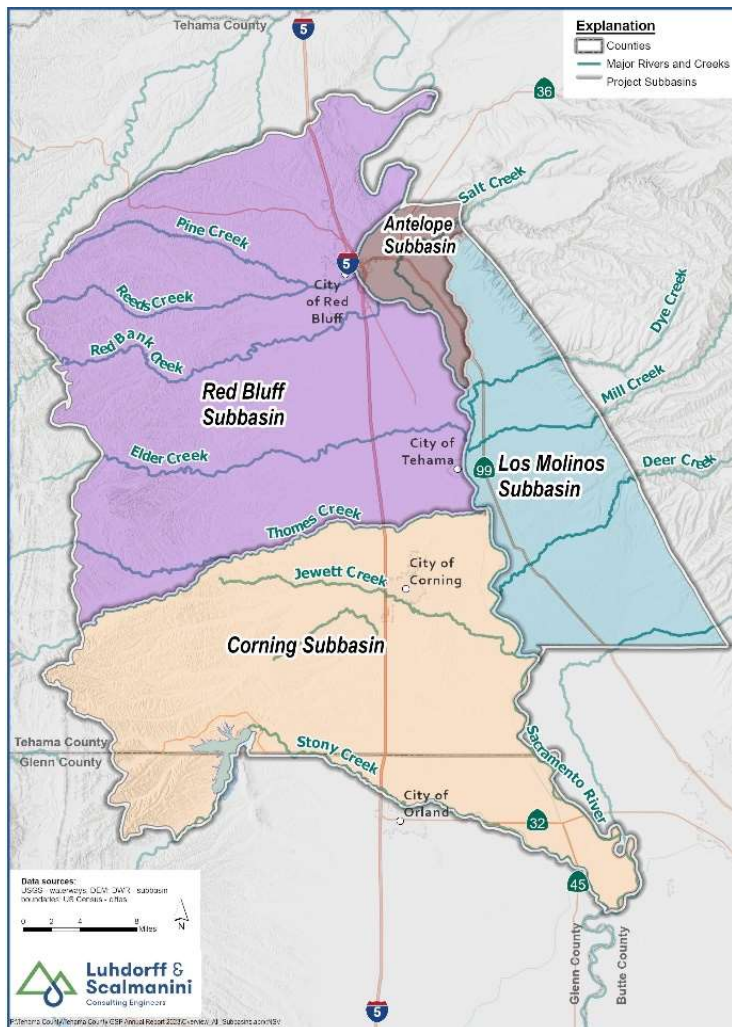
In the Corning Subbasin, the TCFCWCD (Tehama County area) and CSGSA (Glenn County area) each approved resolutions committing to the development of Well Mitigation Program(s) by January 1, 2026 and Demand Management Program(s) by January 1, 2027. The Tehama County Groundwater Commission noted above will also guide the Tehama County efforts in the Corning Subbasin. The CSGSA has appointed a Well Mitigation Program ad hoc committee and Demand Management Program Coordinating Members to similarly develop recommendations on program development. The process for coordination between the GSAs has not yet been determined.

Grant-Funded Projects Underway

GSP Revisions, Reports, and Compliance | \$3,900,000 | Corning, Red Bluff, Los Molinos, and Antelope Subbasins - includes GSP evaluations and amendments, development of Annual Reports and a long-term funding strategy, updates to the regional groundwater/surface water interaction model, and community outreach and engagement. This activity also includes a policy framework for water and land use restrictions and well permitting for the Corning Subbasin. *Contact Justin Jenson or Lisa Hunter (details in footer and on last page) to learn more.*

Monitoring and Addressing Data Gaps | \$4,400,000 | Corning and Antelope Subbasins - includes installation and maintenance of sampling and monitoring stations to fill existing data gaps identified in the Corning and Antelope GSPs, expansion of the groundwater quality monitoring network, and development of a community domestic well monitoring program. The project includes installing interconnected surface water monitoring sites (consisting of one stream gage and three shallow wells), performing synoptic stream gaging to measure the interaction between surface water and groundwater systems, and conducting biological surveys to identify groundwater dependent ecosystems (GDE) and assess the potential undesirable effects of depleting groundwater from interconnected surface water systems. In the Corning Subbasin, the project also includes videologging existing monitoring wells, performing aquifer tests, and geophysical surveys. *Fill out the interest survey to learn more.*

Direct Groundwater Recharge - "Slow the Flow" Projects | \$4,100,000 | Corning, Red Bluff, and Los Molinos Subbasins - includes coordination with local partners and communities to conduct feasibility studies, technical



Sign up to volunteer for groundwater or stream monitoring and sampling:



<https://bit.ly/DomesticWellMonitoring-InterestForm>



assessments, and pilot tests at potential recharge sites such as diversions from Stony, Thomes, and Elder Creeks, and recharge at the California Olive Ranch or pond south of Corning. This activity may include design, implementation of infrastructure updates, and oversight of direct recharge of water on lands to replenish the underlying aquifer. Contact: Pavan Dhaliwal at pdhaliwal@lsce.com or 530-661-0109, or Jenny Scheer at jscheer@waterandlandsolutions.com or 530-720-0553.

Maximizing the Use of Surface Water through Regional Conjunctive Use Projects | \$2,100,000 | Corning Subbasin - includes identification of unused surface water allocations to the region from the Central Valley Project and coordination with water purveyors to maximize regional water transfers to use the maximum allocation in place of (or "in lieu" of) groundwater pumping for irrigation. This activity also includes implementation of conveyance structures and irrigation system upgrades to make it easier for growers to substitute groundwater pumping for surface water use along the Tehama-Colusa Canal. Contact: Jeff Davids, PE at jeff@davidsengineering.com or 530-757-6107, or Jenny Scheer at jscheer@waterandlandsolutions.com or 530-720-0553.

Sign up to volunteer to recharge water on your land:



<https://bit.ly/Recharge-InterestForm>



Left: U.S. Bureau of Reclamation South Pond Option in the Corning Subbasin.

Right: Simpson Road Multi-Benefit Recharge Pilot in the Corning Subbasin.

A Message from the Recharge Team:

Our team is dedicated to enhancing groundwater sustainability through innovative recharge projects. We are making significant strides in securing our water resources for the future by actively involving the community and key stakeholders in these efforts.

We are actively engaged in outreach with the public, stakeholder groups, and county officials to advance our groundwater recharge initiatives. To date, we have conducted 15 meetings with various groups and held follow-up discussions with individual stakeholders. These efforts have included 26 site visits to assess potential recharge locations and gather critical data.

Since January 2024, we have completed three pilot projects and successfully recharged 60 acre-feet of water. Infrastructure improvements have been completed at four sites, with additional upgrades planned for two more sites later this year. Currently, we are in the feasibility and pilot testing phase for all tasks, and we are actively screening sites for selection to pilot 180-day temporary water permits this winter. Additionally, two comprehensive feasibility studies are scheduled for delivery to DWR by the end of summer 2024. We are optimistic that these efforts will pave the way for successful recharge projects, ensuring a sustainable water future for our community.



Incorporating Public Input

The GSP implementation team recognizes how critical it is to keep residents of the Corning, Red Bluff, Los Molinos, and Antelope Subbasins informed about the status of these projects at every stage. We plan to release these Newsletters every three months to keep interested parties informed, and there are plans for holding in person events between now and the project’s end in 2026. To get involved in the monitoring or recharge projects, follow the QR code or bit.ly links provided in this Newsletter or contact the team member identified. Also feel free to check out the agendas for upcoming GSA meetings, where there are opportunities for members of the public to speak and ask questions. To stay informed about opportunities to engage, make sure you are signed up for the GSAs’ interested parties lists by contacting the appropriate GSA staff, listed at the bottom of this Newsletter.

Upcoming GSA Meetings

The Red Bluff, Los Molinos, and Antelope Subbasins are managed by one GSA: the Tehama County Flood Control and Water Conservation District (TCFCWCD). The Corning Subbasin spans the border of Tehama and Glenn Counties and is managed by TCFCWCD GSA and the Corning Sub-basin GSA (CSGSA).

Tehama County Flood Control and Water Conservation District GSA Board:

TCFCWCD serves as the sole GSA managing the GSPs for the Los Molinos, Red Bluff, and Antelope Subbasins (in addition to the Bowman Subbasin, not covered under this GSP implementation project). TCFCWCD GSA manages the Corning Subbasin in coordination with CSGSA, described below, under a single GSP. *Regular meetings of the TCFCWCD Board are generally scheduled for 10:00 AM, the third Monday of every month at the Board of Supervisors Chambers at 727 Oak Street in Red Bluff.*

<https://tehamacountywater.org/gsa/>

Corning Sub-basin GSA Committee: The CSGSA Committee was established by Memorandum of Agreement between the County of Glenn, the Glenn Colusa Irrigation District, and the Monroeville Water District and is responsible for managing the Corning Subbasin in coordination with TCFCWCD under a single GSP. *Regular meetings are generally scheduled for 2:00 PM, the fourth Thursday of every month at the Glenn-Colusa Irrigation Pump Station at 7854 County Road 203 in Orland.*

<https://www.countyofglenn.net/corning-sub-basin-gsa>

Corning Subbasin Advisory Board: Management decisions for the Corning Subbasin are informed by recommendations from a Corning Subbasin Advisory Board (CSAB) comprised of representatives from both GSAs. *Regular meetings of the CSAB are generally scheduled for 1:30 PM, the first Wednesday of every other month at the City of Corning Council Chambers at 794 Third Street in Corning.*

<https://www.corningsubbasingsp.org/csab-meetings>

Tehama County Groundwater Commission: Management decisions for the Los Molinos, Red Bluff, Antelope and Bowman Subbasins are informed by recommendations from the Tehama County Groundwater Commission, comprised of appointed and elected members. The Tehama County Groundwater Commission also informs TCFCWCD GSA’s decision-making regarding the Tehama County portion of the Corning Subbasin. *Regular meetings are generally scheduled for 8:30 AM, the second Wednesday of every month, also at the Board Supervisors Chambers in Red Bluff.* <https://tehamacountywater.org/meetings/groundwater-commission/>

August

Sun	Mon	Tue	Wed	Thu	Fri	Sat
				1	2	3
4	5	6	7	8	9	10
11	12	13	14	15	16	17
18	19	20	21	22	23	24
25	26	27	28	29	30	31

September

Sun	Mon	Tue	Wed	Thu	Fri	Sat
1	2	3	4	5	6	7
8	9	10	11	12	13	14
15	16	17	18	19	20	21
22	23	24	25	26	27	28
29	30					

October

Sun	Mon	Tue	Wed	Thu	Fri	Sat
		1	2	3	4	5
6	7	8	9	10	11	12
13	14	15	16	17	18	19
20	21	22	23	24	25	26
27	28	29	30	31		



There are no upcoming public workshops or meetings specifically about SGMA implementation scheduled at this time. Materials from previous meetings are available on the corresponding GSA's meeting webpage, identified in the resources section of this Newsletter.

Resources

Websites:

- Tehama County Flood Control and Water Conservation District GSA: <https://tehamacountywater.org/gsa/>
- Corning Sub-basin GSA: <https://www.countyofglenn.net/corning-sub-basin-gsa>
- Corning Subbasin Advisory Board meeting: <https://www.corningsubbasingsp.org/csab-meetings>

GSPs:

- Corning Subbasin GSP: <https://sgma.water.ca.gov/portal/gsp/preview/94>
- Antelope Subbasin GSP: <https://sgma.water.ca.gov/portal/gsp/preview/134>
- Red Bluff Subbasin GSP: <https://sgma.water.ca.gov/portal/gsp/preview/140>
- Los Molinos Subbasin GSP: <https://sgma.water.ca.gov/portal/gsp/preview/139>

Water Year 2023 Annual Reports:

- Corning Subbasin 2023 Annual Report: <https://sgma.water.ca.gov/portal/gspar/preview/370>
- Antelope Subbasin 2023 Annual Report: <https://sgma.water.ca.gov/portal/gspar/preview/367>
- Red Bluff Subbasin 2023 Annual Report: <https://sgma.water.ca.gov/portal/gspar/preview/369>
- Los Molinos Subbasin 2023 Annual Report: <https://sgma.water.ca.gov/portal/gspar/preview/368>

Other Information:

- Proposition 68 Sustainable Groundwater Management Grant Award: https://water.ca.gov/-/media/DWR-Website/Web-Pages/News/Files/award-list_sgma_r2_final_list_sept2023_w_components_v2.pdf?utm_medium=email&utm_source=govdelivery
- DWR's Groundwater Recharge webpage: <https://water.ca.gov/Programs/Groundwater-Management/Groundwater-Recharge>

For information about Tehama County's Well Registration Program, visit the TCFCWCD website.

GSA Staff Contacts

Contact Justin Jenson at jjenson@tcpw.ca.gov or 530-690-0700 with questions about groundwater management in Tehama County, or contact nbethurem@tcpw.ca.gov to receive email notices from Tehama County.

Contact Lisa Hunter at lhunter@countyofglenn.net with questions about groundwater management in the Corning Sub-basin GSA or to receive email notices from Glenn County.