



**Corning Subbasin Public Open House**  
**Groundwater Sustainability Plan Implementation Updates**  
**with a Focus on Addressing Data Gaps**



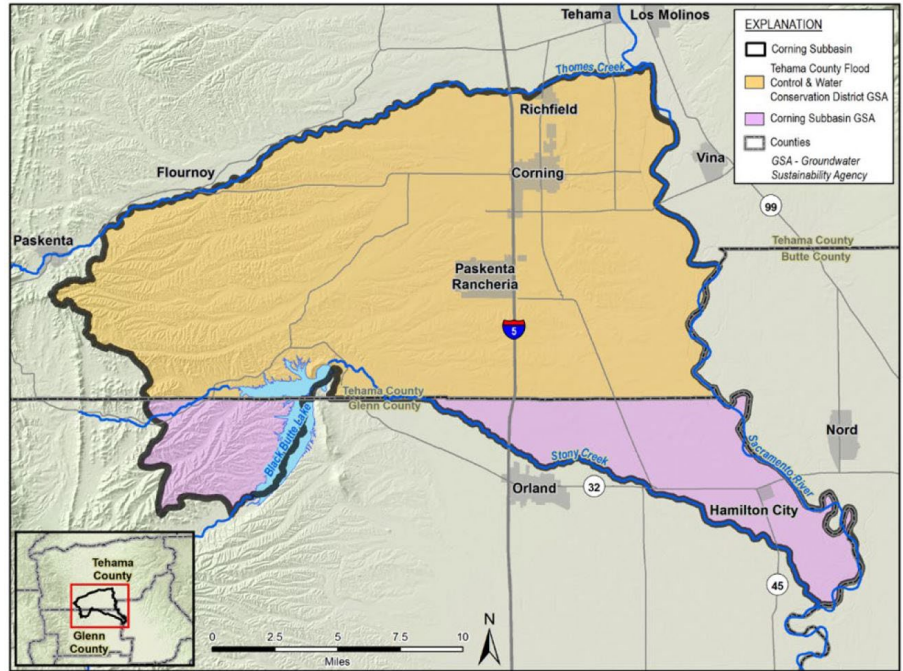
**Wednesday, November 20 | 6:00-7:30pm**  
 Corning Senior Center, 1015 4th Ave, Corning, CA 96021

Following the event, a recording of the presentations will be posted to the websites:  
[TehamaCountyWater.org/Meetings/](http://TehamaCountyWater.org/Meetings/)  
 and [CountyofGlenn.net/Corning-Sub-basin-GSA](http://CountyofGlenn.net/Corning-Sub-basin-GSA)

**Agenda**

- 6:00 Informational Overview\*, including Q&A
- 6:45 Open House Stations
- 7:30 Adjourn

\* Several printed copies of the presentation slides are available, and will be posted online.




**Open House Stations**

1. General SGMA Questions and Getting Involved
2. Groundwater Conditions and Data Gaps/ Monitoring
3. Recharge Projects and In-Lieu Surface Water Use
4. Management Actions and Funding

**Common Acronyms**

<b>CSAB</b>	Corning Subbasin Advisory Board	<b>GSP</b>	Groundwater Sustainability Plan
<b>CSGSA</b>	Corning Sub-basin GSA	<b>MO</b>	Measurable Objective
<b>DWR</b>	California Department of Water Resources	<b>MT</b>	Minimum Threshold
<b>FCWCD</b>	Tehama County Flood Control and Water Conservation District	<b>PMA</b>	Projects and Management Actions
<b>GDE</b>	Groundwater Dependent Ecosystem	<b>SGMA</b>	Sustainable Groundwater Management Act
<b>GSA</b>	Groundwater Sustainability Agency	<b>SMC</b>	Sustainable Management Criteria
		<b>UR</b>	Undesirable Result

To be added to the Interested Parties email list for announcements, contact: **Justin Jenson** at [jjenson@tcpw.ca.gov](mailto:jjenson@tcpw.ca.gov) for updates from the Tehama County side of the Subbasin or **Lisa Hunter** at [lhunter@countyofglenn.net](mailto:lhunter@countyofglenn.net) for updates from the Glenn County side of the Subbasin



The Corning Subbasin GSP is available to view online at the DWR SGMA portal – scan the QR code or access at [bit.ly/30buYns](http://bit.ly/30buYns)



# Corning Subbasin Public Open House Groundwater Sustainability Plan Implementation Updates with a Focus on Addressing Data Gaps



## Workshop Staff

### Conveners:

- **Lisa Hunter**, Glenn County staff, support to the Glenn County portion of the Corning Subbasin (Corning Sub-basin GSA [CSGSA] Manager)
- **Justin Jensen**, Tehama County Flood Control and Water Conservation District staff, support to the Tehama County portion of the Corning Subbasin (Tehama County GSA Manager)

### GSP Implementation Consultants

- **Eddy Teasdale**, Luhdorff & Scalmanini Consulting Engineers (LSCE)
- **Will Anderson**, LSCE

### Facilitation Support:

- **Marisa Perez-Reyes**, Stantec Consulting Services, Inc
- **Stephanie Horii**, Consensus Building Institute (CBI)

## Upcoming Meetings

- **Corning Subbasin Advisory Board (CSAB)** | City of Corning Council Chambers, 794 Third Street, Corning, 1<sup>st</sup> Wednesdays bimonthly at 1:30p: **Dec 4**
- **Tehama County Groundwater Commission** | Board Chambers Room, 727 Oak St., Red Bluff: 2<sup>nd</sup> Wednesdays of the month at 8:30a: **Dec 11**
- **Corning Sub-basin GSA Committee (CSGSA)** | Glenn-Colusa Irrigation Pump Station, 7854 County Rd 204, Orland, 4<sup>th</sup> Thursdays of the month at 2p: **Dec 12**
- **Tehama County Flood Control Board of Directors** | Board Chambers Room, 727 Oak St., Red Bluff:, 3<sup>rd</sup> Mondays of the month at 10a: **Dec 16**

## Resources

Websites: [tehamacountywater.org/gsa/library/](http://tehamacountywater.org/gsa/library/) | [bit.ly/Shortlinkto-CSGSA](http://bit.ly/Shortlinkto-CSGSA) | [CorningSubbasinGSP.org](http://CorningSubbasinGSP.org)

Fall Newsletter: [bit.ly/Fall2024Newsletter-CN-RB-LM-Ant](http://bit.ly/Fall2024Newsletter-CN-RB-LM-Ant)

### Groundwater and SGMA

- Understanding Groundwater: Video (4 min) by DWR - [https://youtu.be/Vtr07\\_bZKlg](https://youtu.be/Vtr07_bZKlg)
- DWR resources (compiled QR 1-pager) -- <https://bit.ly/DWR-Handouts-QRcodes>
- Additional resources: <https://groundwaterexchange.org/>

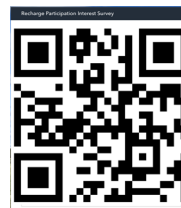
### Web-based, Interactive Maps:

- Data Map Viewer: [bit.ly/TehamaGlennSGMADataMapView](http://bit.ly/TehamaGlennSGMADataMapView)
- Recharge StoryMap: [bit.ly/Recharge-StoryMap](http://bit.ly/Recharge-StoryMap)

### Information on Monitoring and Recharge Projects:



Domestic Well Monitoring  
[bit.ly/DomesticWellMonitoring-InterestForm](http://bit.ly/DomesticWellMonitoring-InterestForm)



Recharge Opportunities  
[bit.ly/Recharge-InterestForm](http://bit.ly/Recharge-InterestForm)