



TEHAMA COUNTY
FLOOD CONTROL AND WATER CONSERVATION DISTRICT

GROUNDWATER DEMAND MANAGEMENT

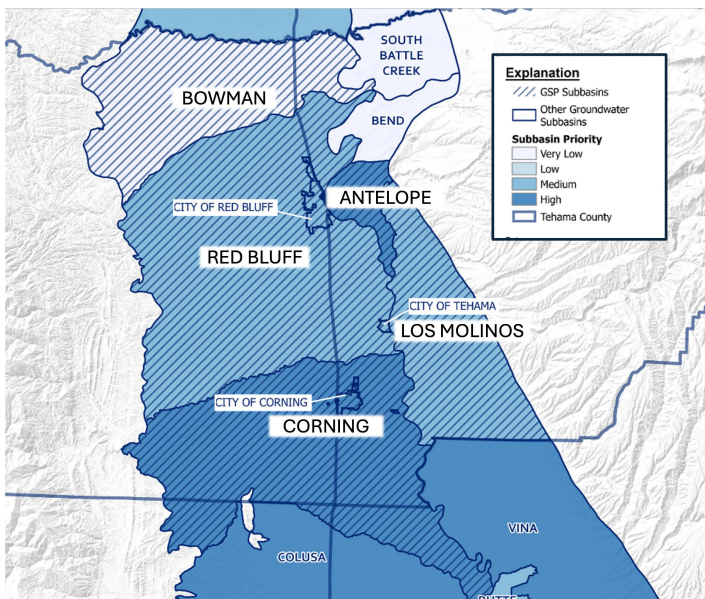
Protecting Our Water Future Together

What is Groundwater Demand Management?

Groundwater demand management involves strategies and programs to reduce water use and ensure our groundwater resources remain sustainable for future generations. It's about using water wisely today to protect our tomorrow.

Why Does Tehama County Need This?

- **Wells are going dry** across Tehama County, threatening water security for families and businesses.
- **State law requires** sustainable groundwater management - California's Sustainable Groundwater Management Act (SGMA) requires all medium and high-priority groundwater basins to achieve sustainability by 2042.
- Four Tehama County subbasins are classified as medium or high priority: **Red Bluff, Antelope, Los Molinos, and Corning**.
- The Tehama County Flood Control and Water Conservation District (District) is the lead agency for water management and SGMA implementation in Tehama County.
- **Without action**, the State could take control of our local groundwater management decisions.



Key Timeline Phases

Demand Management Programs Development

2025: Demand management actions are developed and refined to create a demand management program proposal

Programs Approved and Launched

January 1, 2026: Demand management program begins for subbasins in Tehama County.

January 1, 2027: Final demand management program required for the entire Corning Subbasin, including the Glenn County portion.

District Board will adopt ordinances within 180 days of program adoption.

Phased Implementation

These are draft ideas. Approach and timing may change.

2026-2030: Voluntary incentive programs and data collection

2031 and beyond: Potential mandatory measures if needed

These measures would be evaluated for potential revisions regularly (every 5 years).

State Required Goals

2042: State-required target date for achieving groundwater sustainability

Voluntary and Incentive Based Actions

The District encourages these water-saving practices:

- **Best Management Practices:** Using soil moisture monitoring, regulated deficit irrigation, and runoff capture
- **Water Conservation:** Reducing water use in homes, businesses, and farms
- **Surface Water Use:** If possible, using available surface water instead of pumping groundwater
- **Land Repurposing:** Converting land to uses that benefit groundwater (recharge basins, solar, habitat)
- **Efficient Irrigation:** Upgrading to water-efficient irrigation systems

Potential Mandatory Actions

The District may create zones based on groundwater conditions. Areas with declining water levels would have higher fees/restrictions if triggered. If these incentive-based efforts aren't sufficient, mandatory measures may include:

- **Targeted actions** in zones experiencing the most severe impacts
- **Water fee structures** based on wells and pumping
- **Restrictions** on maximum pumping in specific areas
- **Delayed until 2031** to allow time for planning and adaptation
- **Appeal process** for individuals to apply for lower fees with proof.
- **District backstop** before potential State intervention

How Decisions are Made

District Board of Directors: Final decision-making authority

- **Groundwater Commission:** Advises the Board and develops recommendations
- **Demand Management Working Group:** Includes Groundwater Commissioners and diverse stakeholder perspectives who provide input
- **Public Input:** Community members can attend meetings and provide feedback
- **State Review:** State agencies' evaluations and potential intervention if we can't manage our groundwater sustainably

"What Will this Cost Me?"

This year, the District is working on the cost estimates and funding structures. The District has no dedicated budget for long-term groundwater management after 2025 and cannot rely solely on grants. A fee on all groundwater users is necessary to fund costs including administration, monitoring, well assistance, and demand management. Every added complexity increases costs for everyone. **Stay involved in the coming months!**

YOUR VOICE MATTERS!

This is YOUR groundwater future. We need your input!



Complete our Demand Management Community Survey: <https://www.surveymonkey.com/r/TehamaGW-DemandManagement>
(Your responses are anonymous and confidential)

Attend meetings

- District Board of Directors
- Groundwater Commission meetings
- Demand Management Working Group listening sessions
- Public workshops

Stay updated

- Email list-serve - tehamacountywater.org/contact
- Follow Tehama County Flood Control & Water Conservation District on Facebook

Connect with Staff

Justin Jenson
GSA Program Manager
(530) 690-0700 ext. 201
tehamagsa@tcpw.ca.gov

District Staff office hours:
Mon-Thur, 7:30a-4:30p
1509 Schwab Street,
Red Bluff

Visit the District's website to learn more about getting involved: TehamaCountyWater.org

