

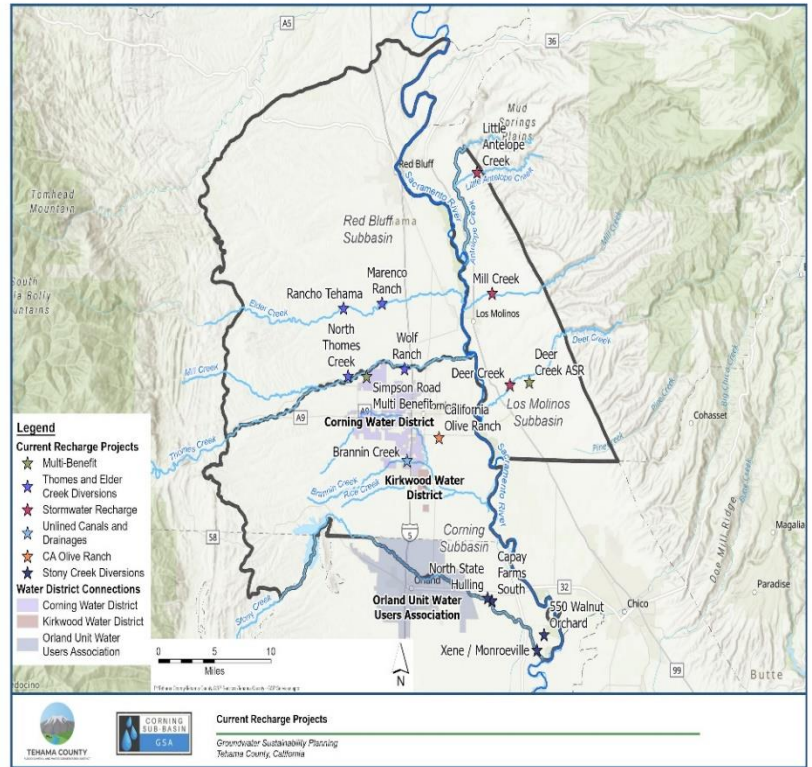


The California Department of Water Resources (DWR) awarded \$15 million to the Corning, Red Bluff, Los Molinos, and Antelope Subbasins for the Tehama County Flood Control and Water Conservation District GSA (TCFCWCD GSA) and Corning Sub-basin GSA (CSGSA). The funding supports implementation of the four Groundwater Sustainability Plans (GSPs) and advances critical projects and management actions toward long-term groundwater sustainability. **This newsletter shares updates from the GSAs and the technical consulting team led by Luhdorff & Scalmanini Consulting Engineers (LSCE) as they work to complete the grant-funded projects during 2026.**

Updates on Recharging Groundwater

Managed Aquifer Recharge (MAR) projects are gaining momentum across the region, with new permits, infrastructure, and landowner partnerships well underway. Here are the latest updates from the Corning, Red Bluff, and Los Molinos Subbasins:

Corning: Five-year recharge permit applications have been submitted for Stony and Thomes Creeks and the technical team is preparing to install temporary equipment this fall and winter to capture high-flow events and direct surface waters into the aquifer. Recharge opportunities on Stony Creek are limited because water rights are held by the U.S. Bureau of Reclamation and delivered through the Orland Unit Water Users Association, so current efforts focus on Thomes Creeks where coordination with individual landowners is feasible. New multi-completion monitoring wells will be installed to track groundwater conditions at multiple depths and assess how recharge water moves below the ground. The team is also working with landowners along Thomes Creek who may be eligible to receive recharge waters if additional equipment, such as pumps or pipelines, is the only barrier. Together with the upcoming construction of 15 new surface water connections, these efforts advance MAR implementation in the Corning Subbasin.



Red Bluff: Five-year recharge permit applications have been submitted in the Red Bluff Subbasin, which are anticipated to create opportunities to expand recharge along Elder and Thomes Creeks. Landowners with existing water rights may be eligible to receive flows if additional equipment, such as pumps or pipelines, are the only barriers to moving the water.

Los Molinos: The Los Molinos Subbasin is planning/designing multi-benefit recharge projects that would improve groundwater and provide habitat benefits (e.g., flooded fields can provide shorebird habitat, riparian projects can aid salmon populations, etc.), if they move forward. Additional landowner involvement would be needed to implement the projects.

Feasibility Studies: Six feasibility studies for recharge and in-lieu projects are in progress. The results of these studies will help inform future projects, thus ensuring this grant generates as much long-term value as possible.

Get Involved: Landowners who are interested in recharge opportunities are invited to reach out to William Anderson (wanderson@lsce.com) and Pavan Dhaliwal (pdhaliwal@lsce.com), or complete a short survey at bit.ly/Recharge-InterestForm.

Volunteers Still Needed for Community Domestic Monitoring Program in Corning and Antelope

The Domestic Monitoring Program in the Antelope and Corning Subbasins serves to track changes in water levels in privately owned domestic wells. The equipment allows the owners of the wells to see real-time water levels and track well

Antelope Subbasin Program Flyer:
<https://bit.ly/AntelopeMonitoring>

Corning Subbasin Program Flyer:
<https://bit.ly/CorningMonitoring>



efficiency. Thank you to those who have already volunteered to participate, the team is following up to coordinate next steps. If you are interested in participating and own a domestic well in either the Antelope or Corning Subbasin but have not yet reached out, please fill out this survey: <https://bit.ly/43j0siz>. More information is available on the flyers linked in the sidebar.

Demand Management Programs

In the Glenn County portion of the Corning Subbasin, the CSGSA has formed an ad hoc to help advise on the preparation of a Demand Management Program by January 1, 2027. In Tehama County, which includes the Red Bluff, Antelope, Los Molinos, and a portion of the Corning Subbasin, a Demand Management Program must be in place by January 1, 2026.

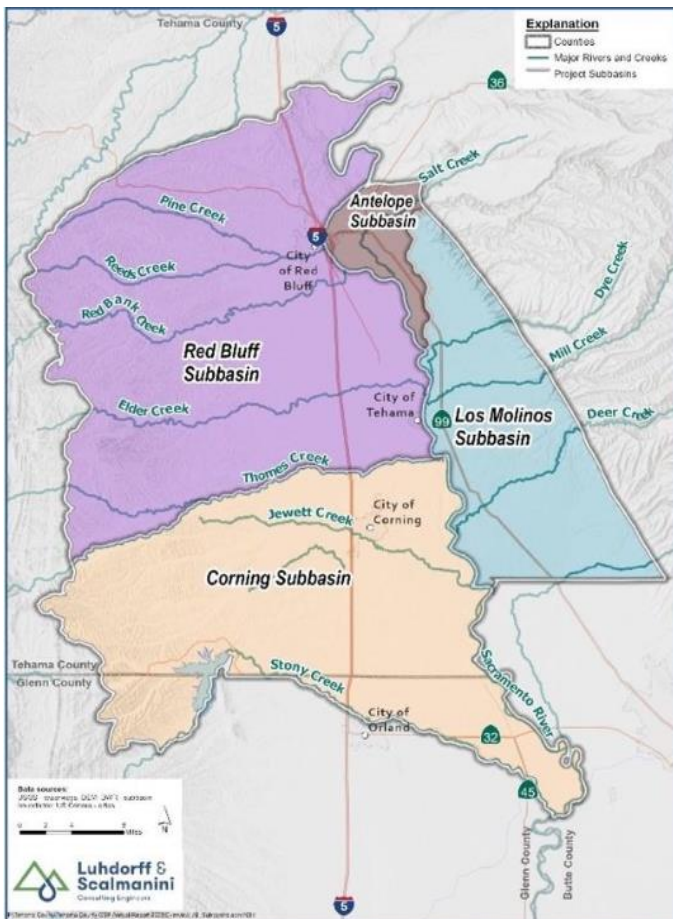
As an interim step for their program, TCFCWCD GSA has developed a Groundwater Demand Management Framework (not yet publicly available) that explores a range of tools that could be leveraged to save water, such as voluntary conservation, incentive programs to fallow or repurpose land, and groundwater use tracking systems. TCFCWCD GSA seeks to prioritize incentive-based actions first, while balancing considerations of fairness, costs, and protecting vulnerable communities.

Continued input from landowners, water users, and community members will be essential in shaping how these programs are put into practice across the Subbasins.

Looking Ahead...

GSP Evaluation – SGMA requires GSAs to periodically review their GSPs every five years at a minimum, to assess progress towards sustainability and prepare Plan Amendments as needed. Planning will begin in late 2025 for the periodic evaluations due January 2027 to review current groundwater conditions, progress toward sustainability goals, and potential updates to projects or management actions.

Engagement Opportunities – Stay tuned for more information about opportunities to engage with the technical team on topics related to the implementation grant in early 2026!



Upcoming Meetings at-a-Glance

November 17 | TCFCWD Board
December 3 | CSAB Meeting
December 3 & 4 | Tehama County Public Meeting
December 10 | Groundwater Commission
December 11 | CSGSA Meeting
January 28 | North Sacramento River Interbasin Coordination Webinar

GSA Staff Contacts

Contact **Lisa Hunter** at lhunter@countyofglenn.net or 530-934-6540 with questions about groundwater management in the Corning Sub-basin GSA or to receive email notices from Glenn County.

Contact **Justin Jenson** at jjenson@tcpw.ca.gov or 530-690-0700 with questions about groundwater management in Tehama County, or contact TehamaGSA@tcpw.ca.gov to receive email notices from Tehama County.

Tehama County Flood Control and Water Conservation District GSA Website: <https://tehamacountywater.org/gsa/>; for information about [Tehama County's Well Registration Program](#), visit the TCFCWCD website.

Corning Sub-basin GSA Website:
<https://www.countyofglenn.net/corning-sub-basin-gsa>