

MANAGING OUR GROUNDWATER
FOR THE FUTURE



TEHAMA COUNTY
FLOOD CONTROL AND WATER CONSERVATION DISTRICT

Tehama County Sustainable Groundwater Management Updates

Public Meetings

April 1 & 2, 2026

6:00 – 8:00 PM

TehamaCountyWater.org

Meeting Objectives

COMMON TERMS

SGMA (“Sigma”): Sustainable Groundwater Management Act

GSA: Groundwater Sustainability Agency

GSP: Groundwater Sustainability Plan

PMAs: Projects & Management Actions

- Educate the public on SGMA requirements and implementation, current groundwater conditions, and overdraft estimates.
- Provide an update on the projects and management actions underway to help achieve long-term groundwater sustainability in Tehama County, including demand management, recharge, and dry well mitigation.
- Share the latest information on grant spending and fee development to pay for SGMA administration and project implementation.
- Receive public input on all of the above.
- Highlight opportunities to stay involved and improve public engagement going forward



AGENDA

6:00pm Open and Welcoming Remarks; Agenda Review

6:10pm Where We Are: GSP Implementation & Groundwater Conditions

6:30pm What We're Doing: Updates on Actions

6:45pm How We're Funding This: County Fee Study Update

7:05pm Next Steps & Staying Involved

7:10pm Questions, Discussion, Public Input

8:00pm Adjourn



Meet The Project Team

Convener: Tehama County Flood Control & Water Conservation District



TEHAMA COUNTY
FLOOD CONTROL AND WATER CONSERVATION DISTRICT

- Justin Jenson
- Adriana Langarica
- Lena Sequeira

Technical Consultant: Luhdorff & Scalmanini Consulting Engineers (LSCE)



- Jacques DeBra
- Will Anderson

Facilitation Support: Consensus Building Institute (CBI)

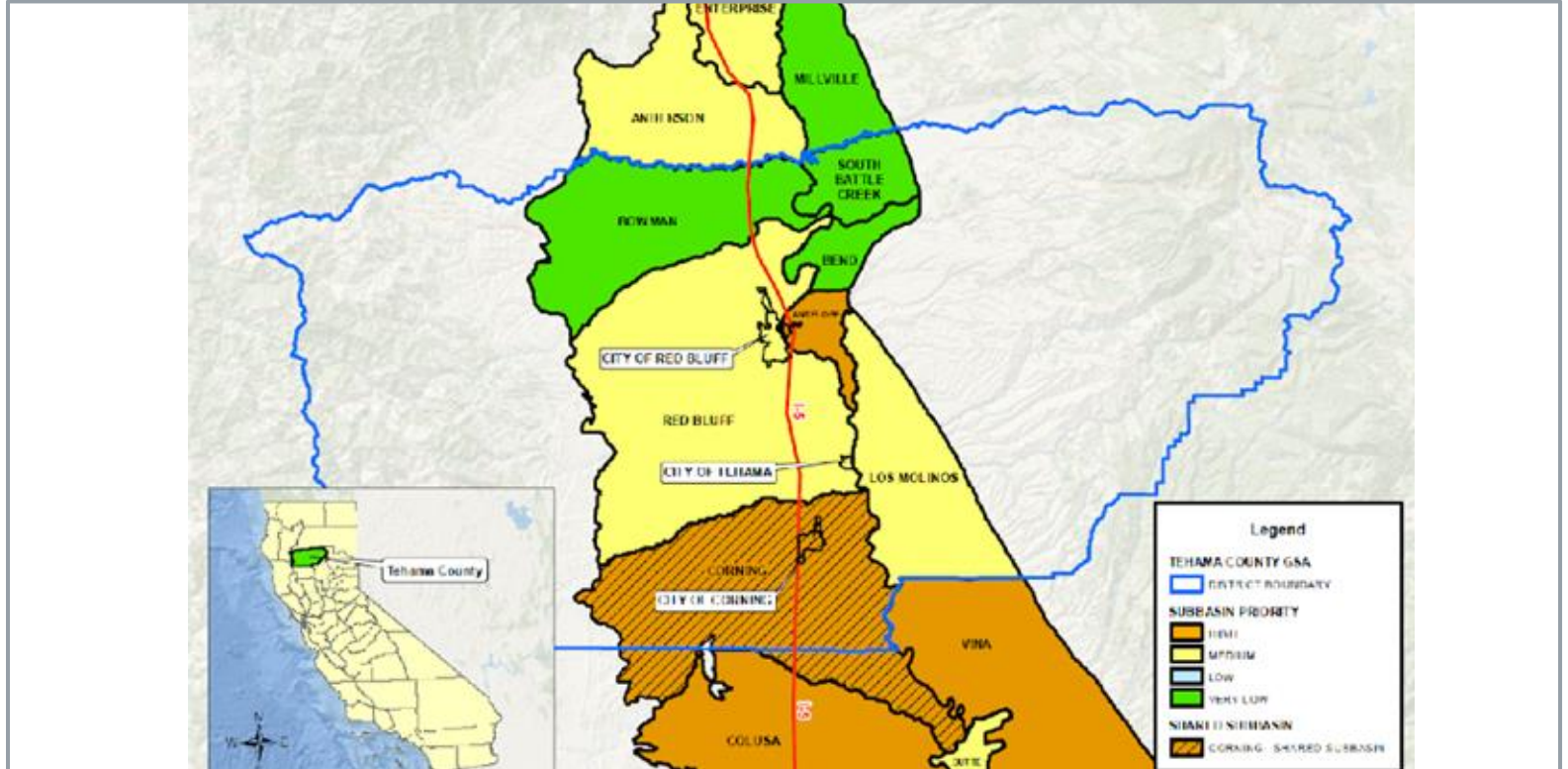


- Sophie Carrillo-Mandel
- Stephanie Horii

Participation Protocols

Today we are...

- Aiming to hear from everyone – please be concise
- Working toward shared understanding – ask questions and listen to understand
- Capturing the public's thoughts
 - Use the mic
 - Submit written comment
 - Email tehamagsa@tcpw.ca.gov
- In a meeting with our neighbors – *introduce yourself to the person next to you*



Where We Are

GSP Implementation & Groundwater Conditions Updates

SGMA Basics



The Sustainable Groundwater Management Act (SGMA) -- law was passed in 2014



Values Local Control
Groundwater Sustainability Agencies (GSAs)



Management plans = Groundwater Sustainability Plans (GSPs)



GSPs submitted to the State by January 31, 2022



Sustainability must be achieved within 20 years
(by 2042)

What Is the Purpose of SGMA?

- Promote sustainable management of groundwater basins
- Enhance local management to protect our groundwater; State will step in if necessary
- Improve data collection and understanding of groundwater resources and management
- Avoid or minimize undesirable results to groundwater

Undesirable Results



Lowering
GW Levels



Reduction
of Storage



Land
Subsidence



Degraded
Quality



Surface Water
Depletion



Seawater
Intrusion

Tehama County GSA: Governance

Guidance & Recommendations Groundwater Commission

11 members representing cities, private pumpers, surface water and groundwater agencies, and County Supervisorial Districts

Meets 4th Wed. of the month at 8:30 am

Final Decision-Making District Board of Directors

Comprised of 5 County Board of Supervisors:
Hansen, Burroughs, Walker, Jones, *vacant*

Meets 3rd Monday of the month at 11am

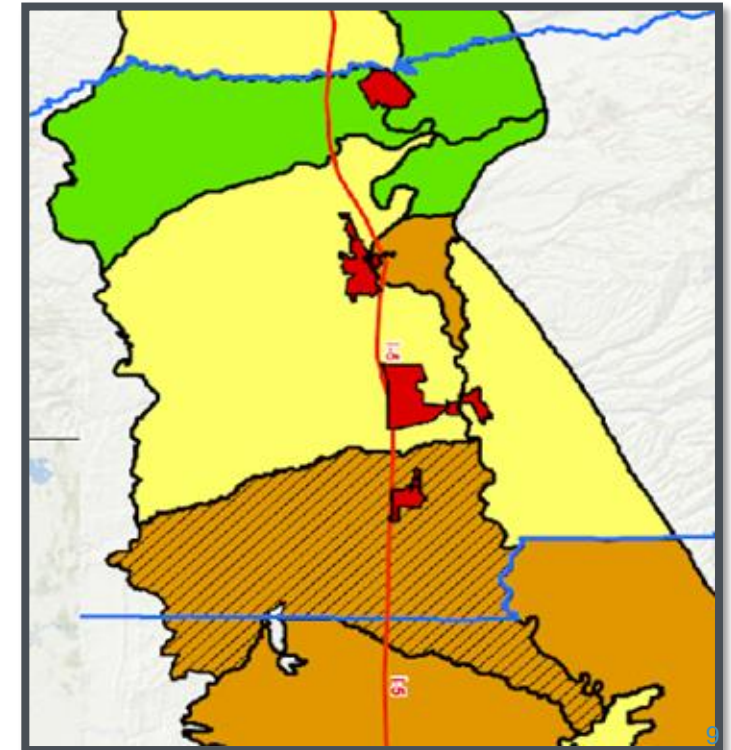
Support District Staff & Consultants

District staff and consultants receive guidance and input from the Board, Commission, and stakeholders.

District Office and Hours: 1509 Schwab St,
M-Th, 7:30a-4:30p

Engagement Throughout Stakeholders and General Public

The GSA aims to raise awareness and engage stakeholders and the general public on GSP elements and SGMA implementation. Continued participation is essential to achieve sustainability.



Meeting Info: TehamaCountyWater.org

Corning Subbasin



TEHAMA COUNTY
Flood Control and Water Conservation District



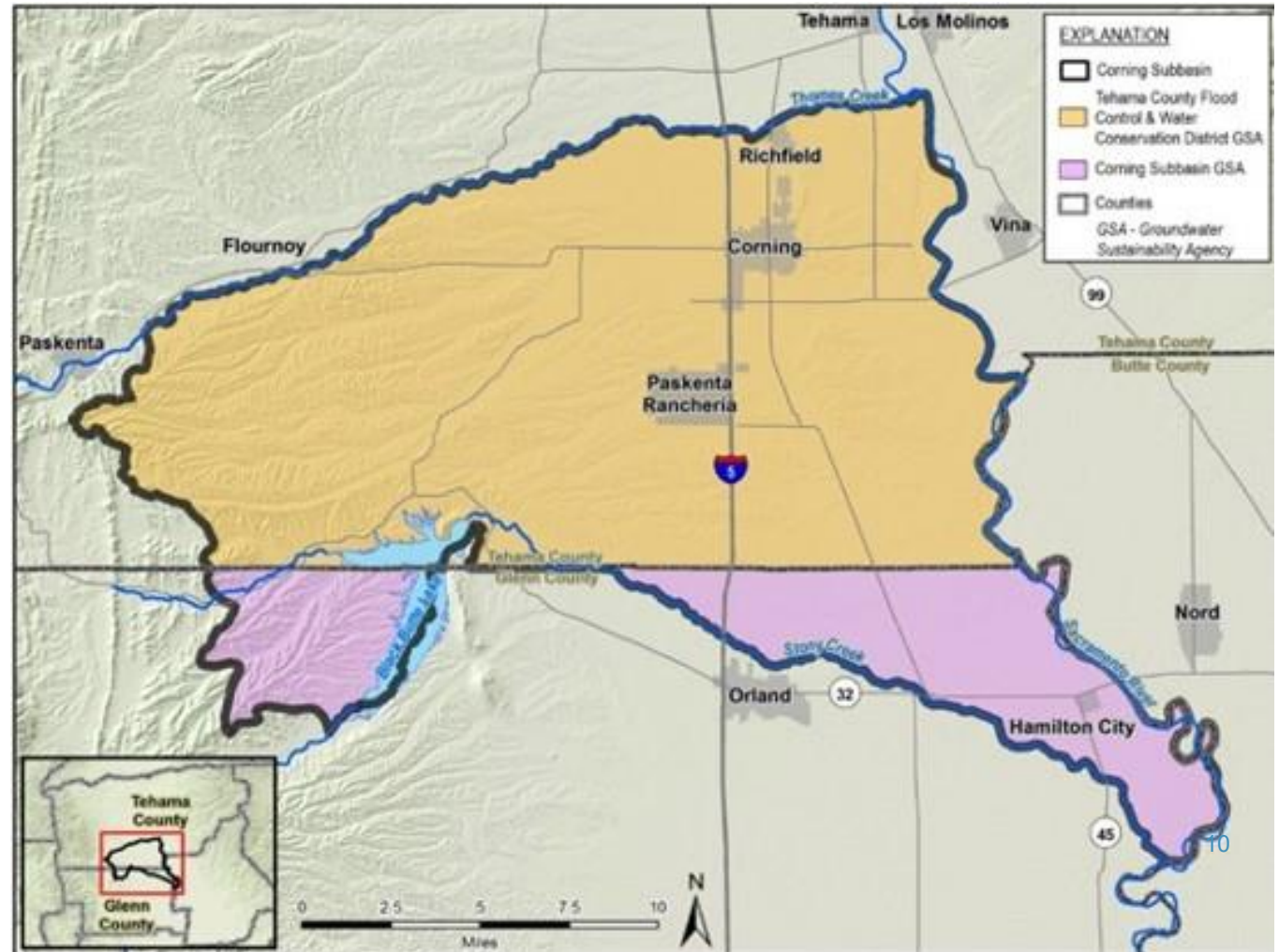
Co-managed by 2 GSAs

- Tehama County GSA
- Corning Sub-basin GSA
 - Glenn County
 - Glenn-Colusa Irrigation District
 - Monroeville Water District

1 GSP developed

Corning Subbasin Advisory Board (CSAB) meets the 1st Wednesday of each month

CorningSubbasinGSP.org



SGMA Implementation Timeline

- [GSPs on website](#)
- Mailing list for updates

TehamaCountyWater.org



Occurring throughout:

- Conduct Outreach & Engagement
- Measure Progress, Evaluate, and Modify¹¹

PAST & ONGOING OUTREACH

- Newsletters
- Fact Sheets & Info Resources
- Public Meetings & Workshops
- Grant Updates Webpage
- Demand Management Survey
- Spanish-Language Radio & Surveys


<https://tehamacountywater.org/sgmp-round2grant/>



GROUNDWATER DEMAND MANAGEMENT

Join the Antelope Subbasin GSA Community Domestic Monitoring Program

The Antelope Subbasin is establishing a monitoring program to track water levels in 25 volunteer wells over a five-year period. Thanks to grant funding, all monitoring equipment, installation, and data management are covered.



Why Do We Need This Program?

- Wells at risk of being threatened by businesses
- State law requires groundwater management
- Groundwater is a critical resource for all media to achieve
- Four Tehama County Subbasins: Corning, Red Bluff, Los Molinos, and Antelope


Sustainable Groundwater Management Implementation
Fall 2025 Newsletter | Corning, Red Bluff, Los Molinos, and Antelope Subbasins



The California Department of Water Resources (DWR) awarded \$15 million to the Corning, Red Bluff, Los Molinos, and Antelope Subbasins for the Tehama County Flood Control and Water Conservation District GSA (TCFCWC) Sub-basin GSA (CSGSA). The funding supports implementation of the four Groundwater Sustainability Plans (GSPs) which advances critical projects and management actions toward long-term groundwater sustainability. **This newsletter provides updates from the GSAs and the technical consulting team led by Luhdorff & Scalmanini Consulting Engineers.** They work to complete the grant-funded projects during 2026.

Updates on Recharging Groundwater

Managed Aquifer Recharge (MAR) projects are gaining momentum across the region, with new permits, infrastructure, and landowner partnerships well underway. Here are the latest updates from the Corning, Red Bluff, and Los Molinos Subbasins:



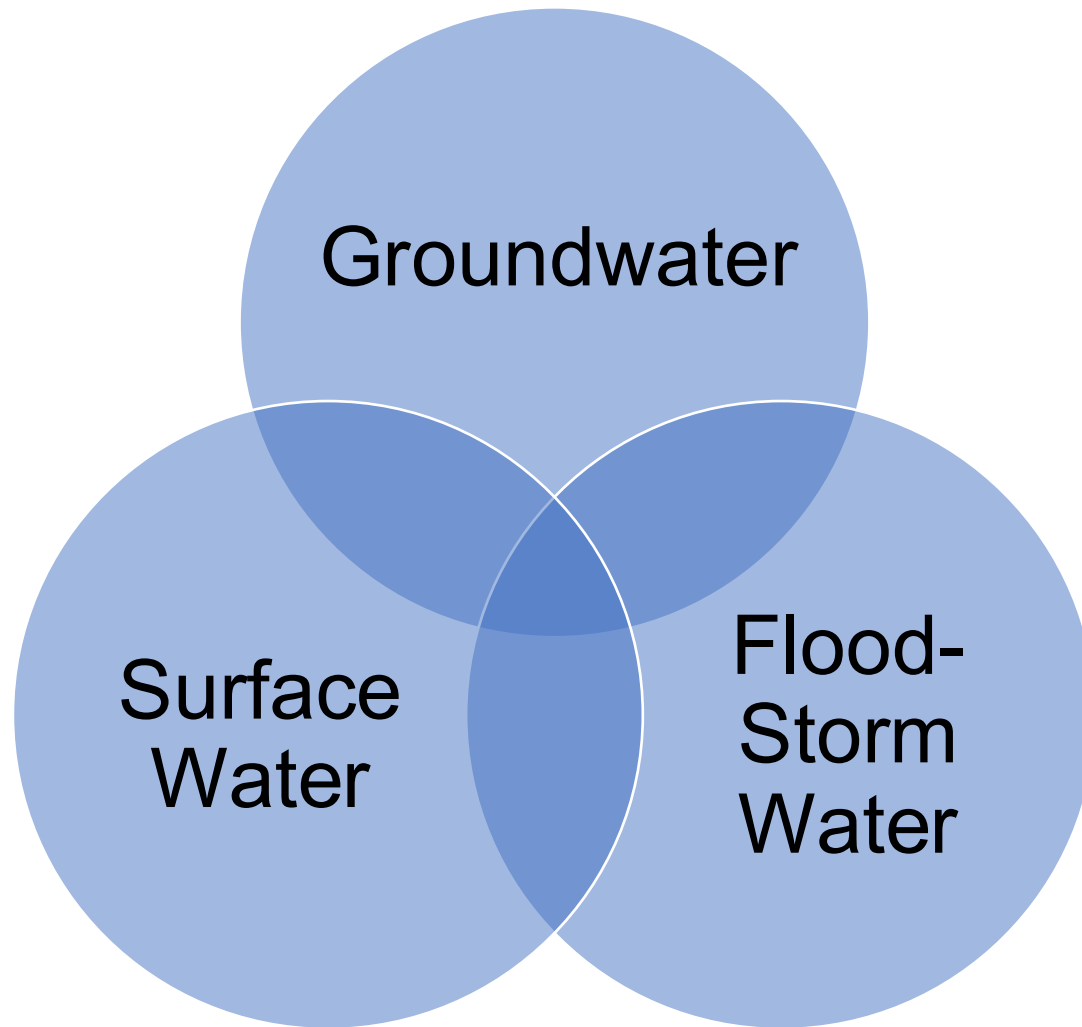
Corning: Five-year recharge permit applications

Tehama GSA Groundwater Conditions & Annual Reporting

April 1 and 2, 2026, Public Workshops



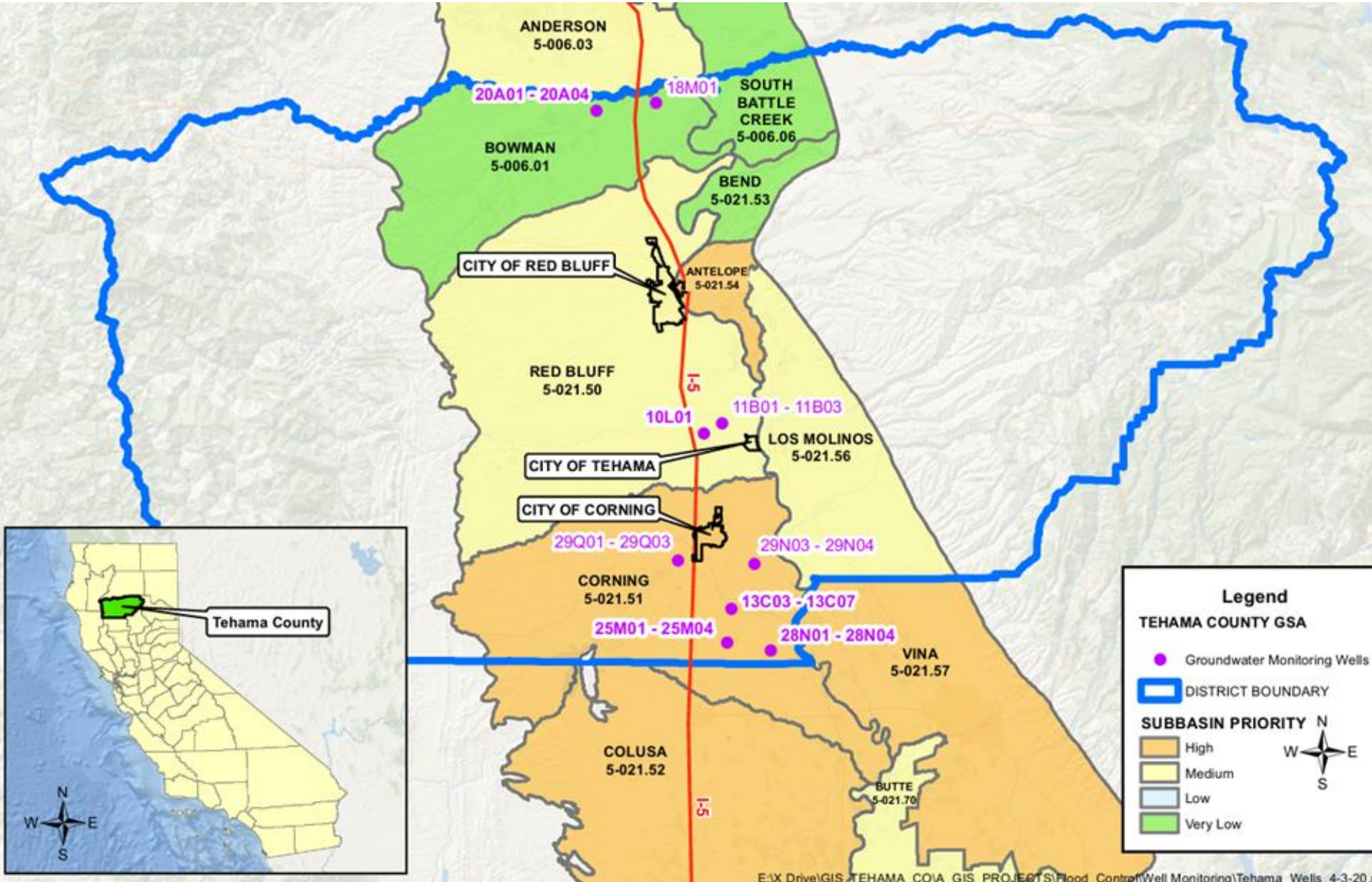
Water Conditions – tracked by the TCFCWCD



- Groundwater Conditions
 - Water Levels
 - Water Quality
- Surface Water Conditions
 - Central Valley Project (CVP) Water Supplies
 - Other Water Rights
- Flood-Storm Conditions
 - Flood-Storm Flows
 - Peak Flows/Events

Water Conditions - based on best available information!

Water Conditions –Groundwater overdraft



- Existing Monitoring Network Location Map (2024)
- Corning Subbasin monitoring wells added
 - 5 M-C Wells
 - 10 Shallow Wells
- Antelope Subbasin monitoring wells added
 - 3 M-C Wells
 - 5 Shallow Wells



We need YOU to volunteer to monitor your well!

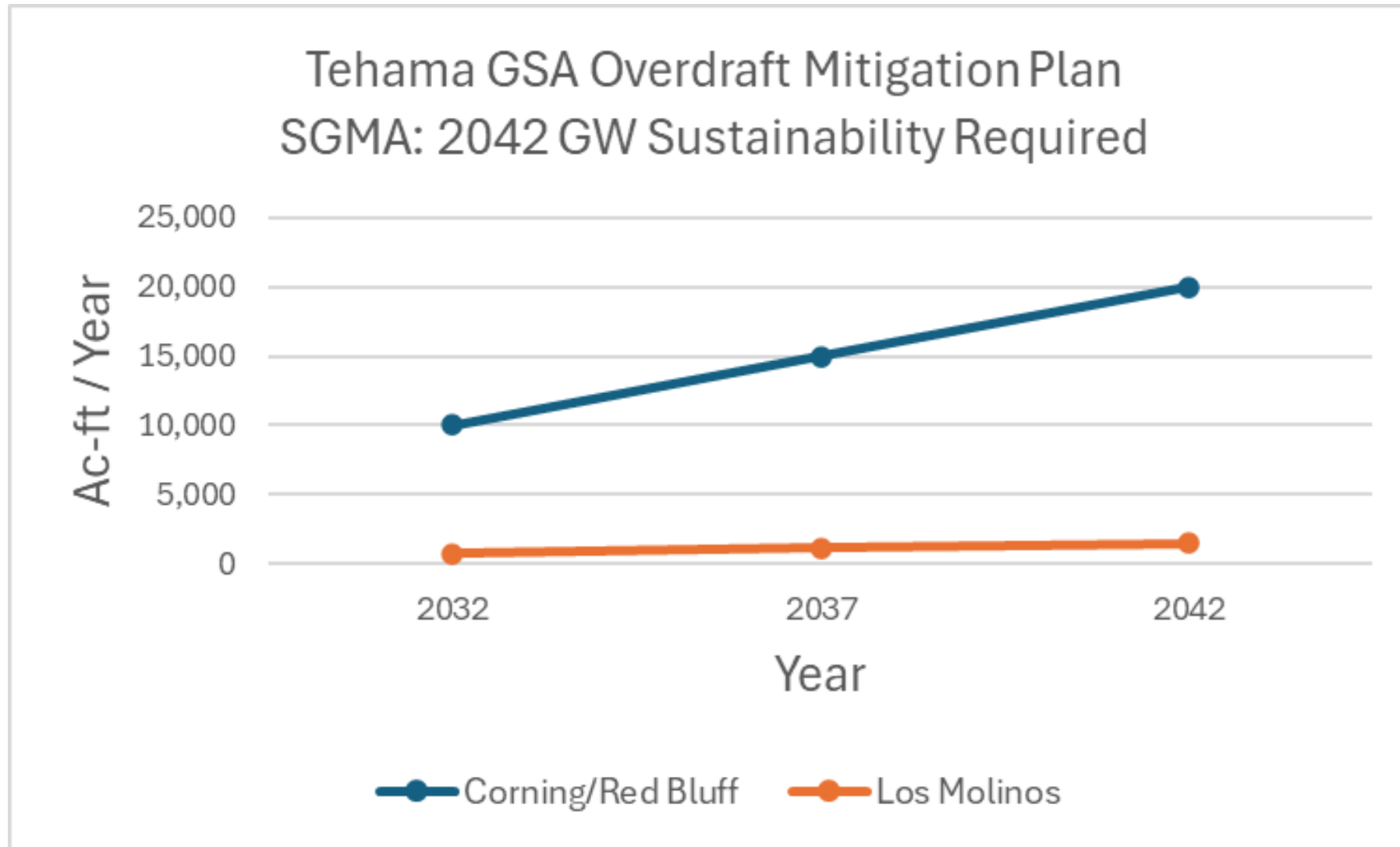
Water Conditions – indicate groundwater overdraft

Groundwater Overdraft – Observed in 3 Subbasins

	<u>Avg Annual. Overdraft To Mitigate</u>	<u>Next Update Overdraft To Mitigate</u>
Corning Subbasin	20,000 afy	2027 GSP Update
Red Bluff Subbasin	20,000 afy	2027 GSP Update
Los Molinos Subbasin	1,500 afy	2027 GSP Update

Subbasin overdraft figures will be updated at least every 5 years based on updated water condition data and observed supply and demand project implementation impacts.

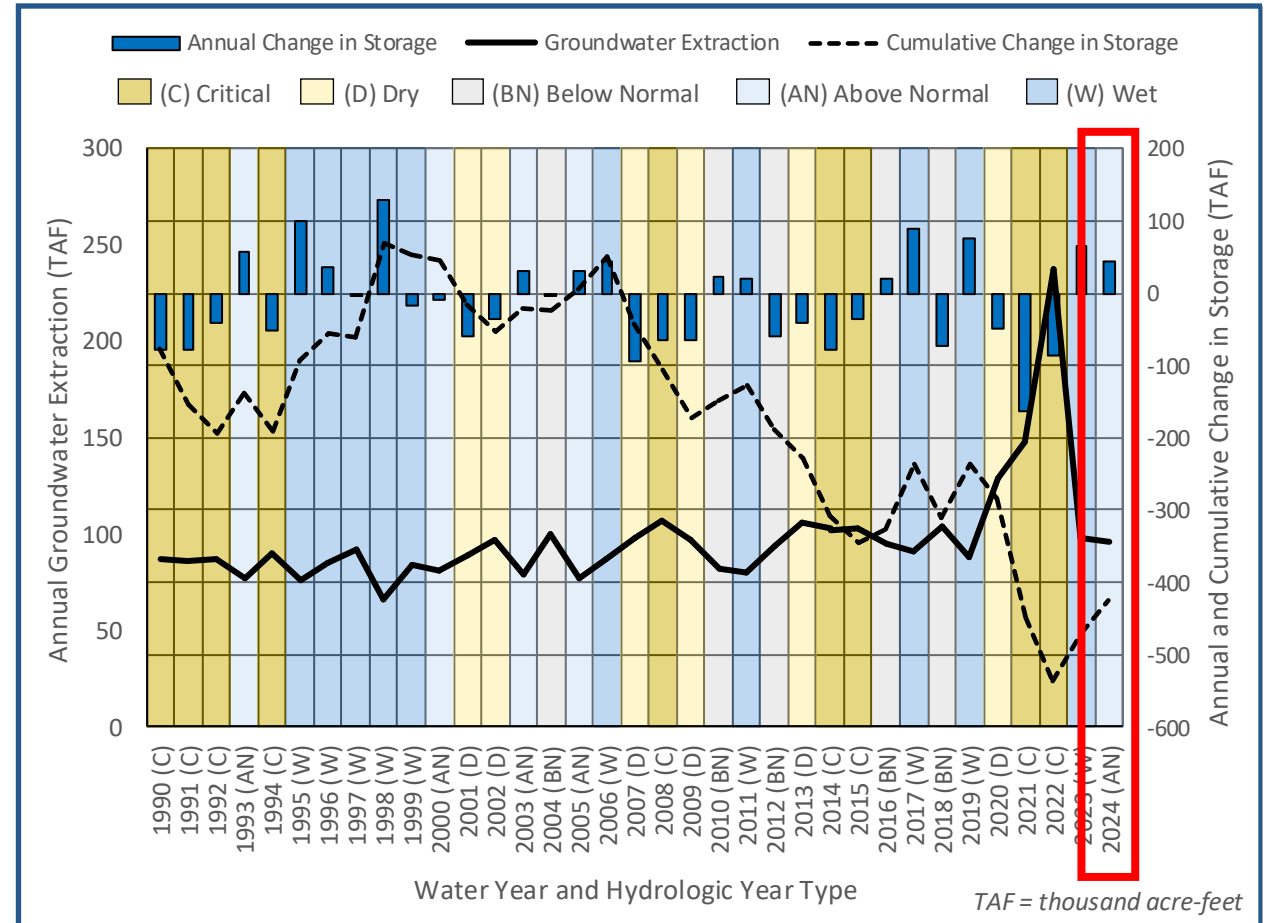
Water Conditions – indicate groundwater overdraft



Water Conditions – Red Bluff groundwater overdraft

Table 4-1. Change in Groundwater Storage

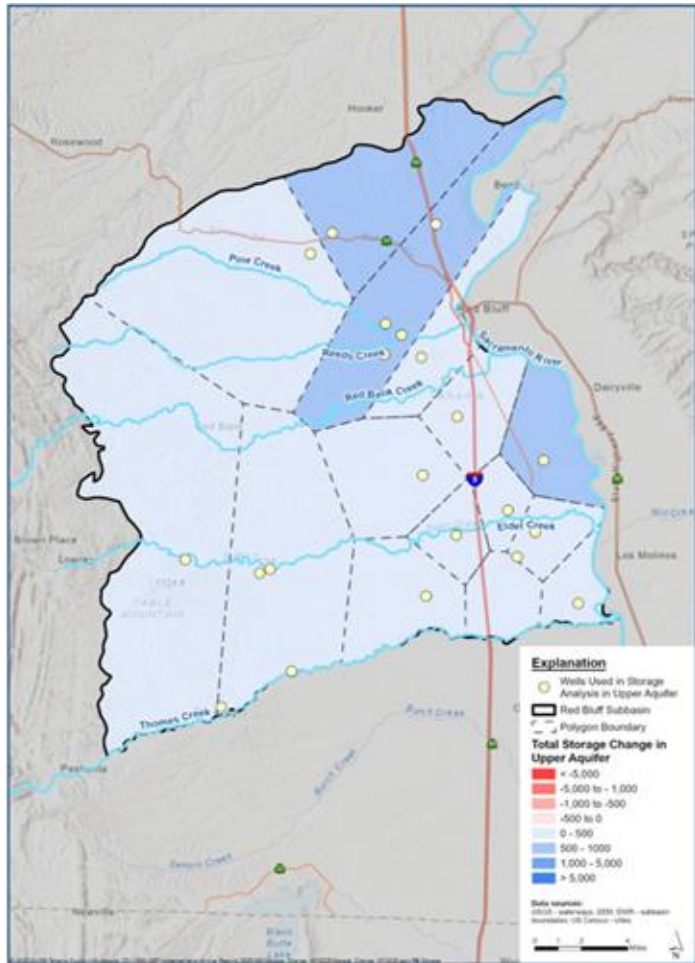
Water Year & Type	Groundwater Extraction (af)	Annual Groundwater Storage Change (af)	Cumulative Groundwater Storage Change (af)
2010 (BN)	93,400	19,000	-323,400
2017 (W)	90,600	88,000	-237,400
2018 (BN)	104,200	-74,000	-311,400
2019 (W)	88,300	75,000	-236,400
2020 (D)	129,300	-49,000	-285,400
2021 (C)	148,100	-164,000	-449,400
2022 (C)	237,300	-87,000	-536,400
2023 (W)	98,000	66,000	-470,400
2024 (AN)	95,800	44,800	-425,600
Historic Averages (2000-2023)			
2000-2023 (23 years)	97,094	-13,835	
W (9 years)	84,680	54,010	
AN (4 years)	78,475	26,875	
BN (5 years)	95,060	-18,600	
D (6 years)	102,617	-57,667	
C (9 years)	116,611	-75,444	



- Total (upper and lower aquifer) change in storage: 44,800 AF
- Upper Aquifer: 14,100 AF; Lower Aquifer: 30,700 AF

DWR Annual Reports – Red Bluff (WY2025)

Lack of Full Recovery in Wet Year – Lower Aquifer

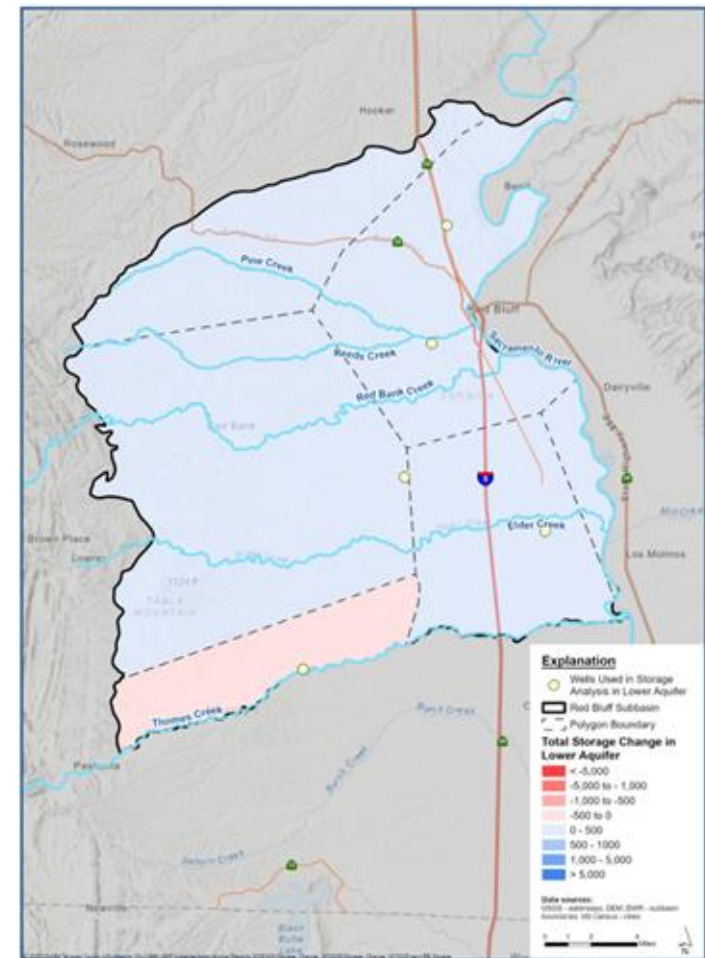


Upper Aquifer

Red Bluff
Subbasin

Change in GW
Storage

Spring 2024 -
Spring 2025



Lower Aquifer

Water Conditions – Managing Groundwater Overdraft

Achieving Groundwater Sustainability – With Flexibility

Striking a balance between cost-effectively increasing supplies and reducing demands.

Schedule:

2026 – Progress Begins

2042 – SGMA Deadline



Working with landowners to establish local solutions to maintain local control.

Water Conditions – Accessing Groundwater Data

The screenshot shows the Hydrogi website interface. The navigation bar includes HOME, MEETINGS, **GROUNDWATER**, FLOOD CONTROL, DROUGHT RESOURCES, RFPS/RFQS, and CONTACT. The GROUNDWATER menu is open, listing: Groundwater Sustainability Agency, Groundwater Sustainability Plans, SGMP Round 2 Grant Updates, **Groundwater Level Monitoring**, Agency Governance Structure, Groundwater Ordinances, and Groundwater Resources. Below the menu, four monitoring locations are displayed, each with a line graph showing groundwater level data over time:

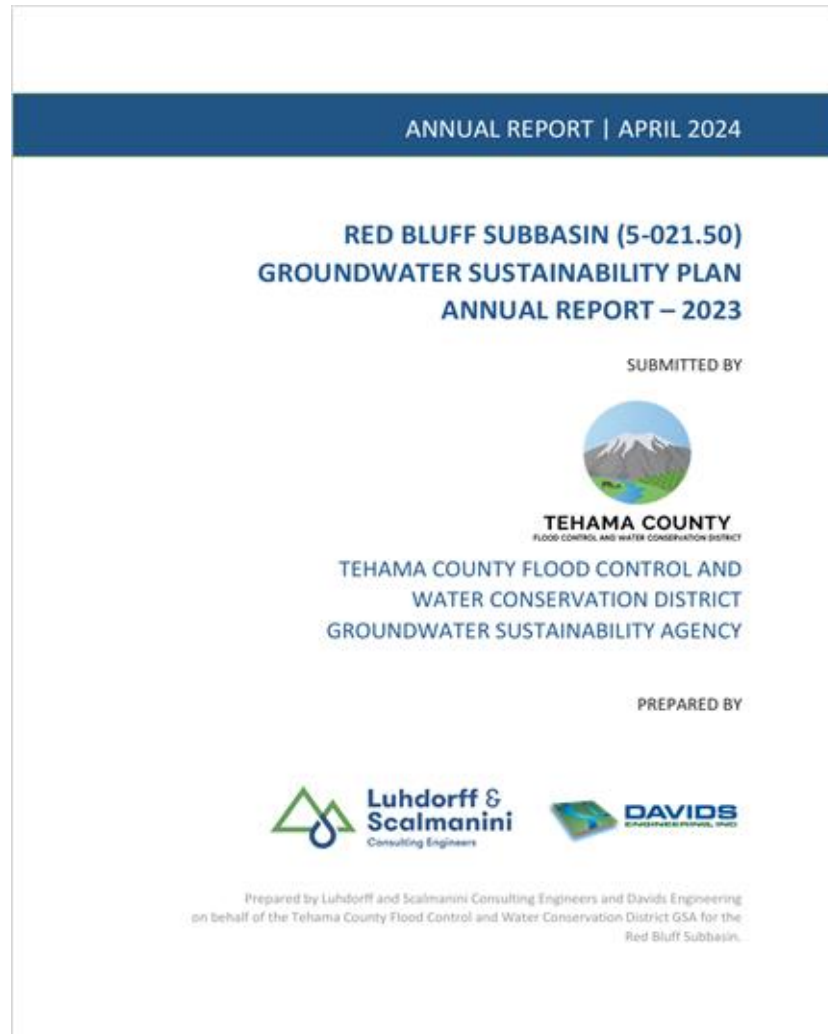
- Ger... East of ...** (25N03W11B01)
- Capay Road @ Hall Road** (23N03W13C03M – 23N03W13C07M)
- Bowman Road @ Evergreen School** (29N04W20A01M – 29N04W20A04M)
- Inghram Road @ Tehama-Colusa Canal** (23N03W25M01M – 23N03W25M04M)



Groundwater Data is available on the GSA website

<https://tehamacountywater.org/gsa/groundwater-level-monitoring/>

DWR Annual Reports – SGMA Compliance Action



- Medium, High and Critically Drafted subbasins are required to prepare and submit Annual Reports to DWR to maintain compliance with SGMA regulations.
- Tehama GSA prepares Annual Reports for Corning, Red Bluff, Los Molinos, Antelope, and Bowman subbasins.
- Annual Reports for Water Years 2021, 2022, 2023, 2024, and 2025 have been prepared and submitted to DWR by the April 1 annual deadline.

DWR Annual Reports – SGMA Compliance Action

Typical Annual Reports Preparation Schedule

- Oct-Dec: Monitoring network data collection and analysis.
Jan-Feb: Data evaluation and QA/QC.
March: Preparation and GSA approval of Annual Reports.
April: Submittal of approved Annual Reports to DWR.

Future annual reports to include:

- Detailed descriptions of actions taken to avoid/reverse threshold exceedances.
- Specific PMAs to address unsustainable water supply areas.
- Improved monitoring data (seasonal lows, measurement dates, and reduced data gaps).

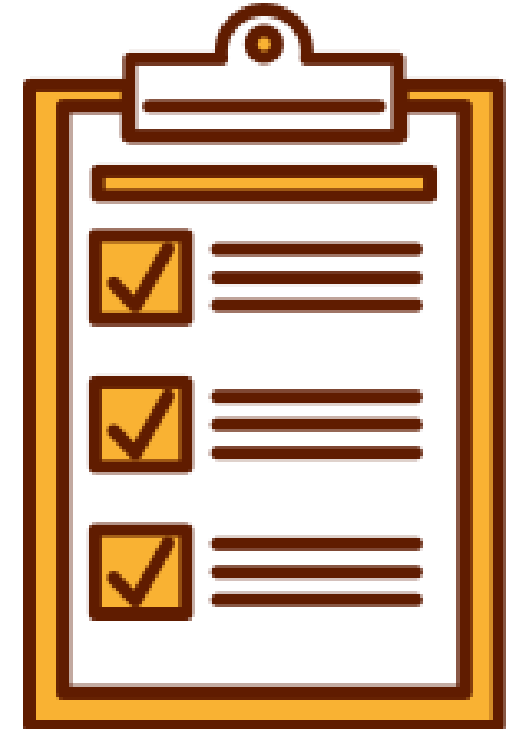


Tehama County Annual reports are available on the GSA website:
<https://tehamacountywater.org/gsa/groupwater-sustainability-plans-public-draft/>

Annual Reports from all GSAs statewide are available on the DWR website: <https://sgma.water.ca.gov/portal/gspar/submitted>

DWR SGMA Compliance – Report Card

SGMA Requirements	Purpose
Establish Local GSA	Long term local control
Develop Sustainability Indicators	Measurable Objectives & Min Thresholds Well Levels
Prepare Annual Reports	Groundwater conditions
Prepare Periodic Evaluations	Plan updates every 5 years
GSA Coordination	Within Tehama County With Neighboring Counties
<u>Local GSA – Other Costs To Achieve SGMA Compliance</u>	
Data Management	Data Collection Data quality control/integration
Special Studies-PMA Development	Sustainability Actions
Future Grant Funding Procurement	Reduce Future Local Costs



Tehama GSA: passing grade on SGMA compliance (2021-2026); future compliance will require local funding source.



Overview of Actions

Grant spending

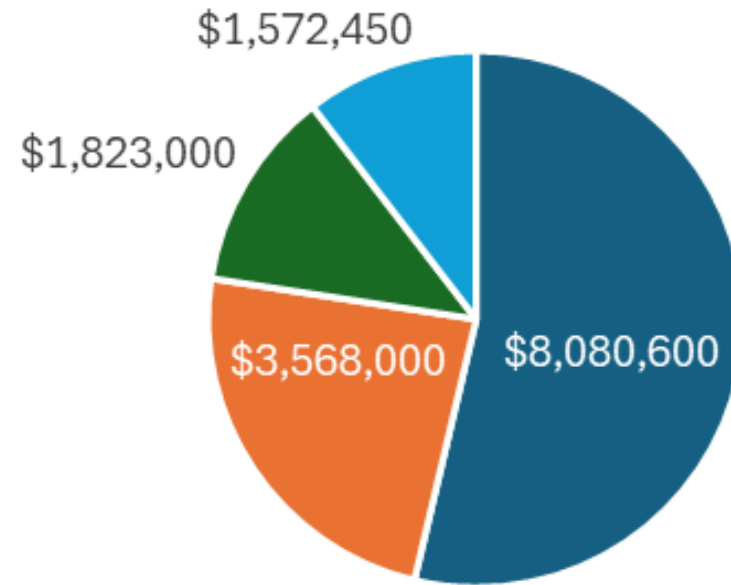
Managing demand for water

Other actions

- Increasing water supply (recharge)
- Mitigating dry wells
- Monitoring conditions

Tehama GSA – DWR Grant Funds Summary

DWR Grant Amount

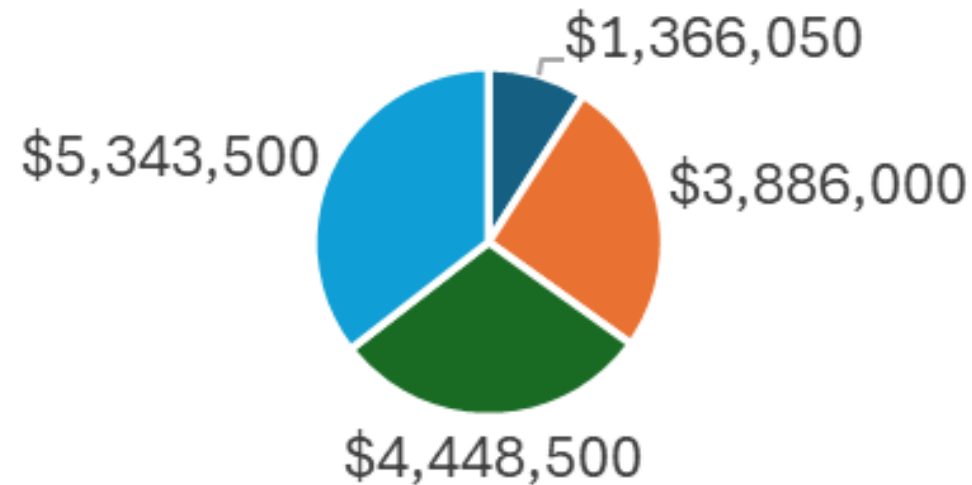


■ Corning ■ Red Bluff ■ Los Molinos ■ Antelope

<https://tehamacountywater.org/sgmp-round2grant/>

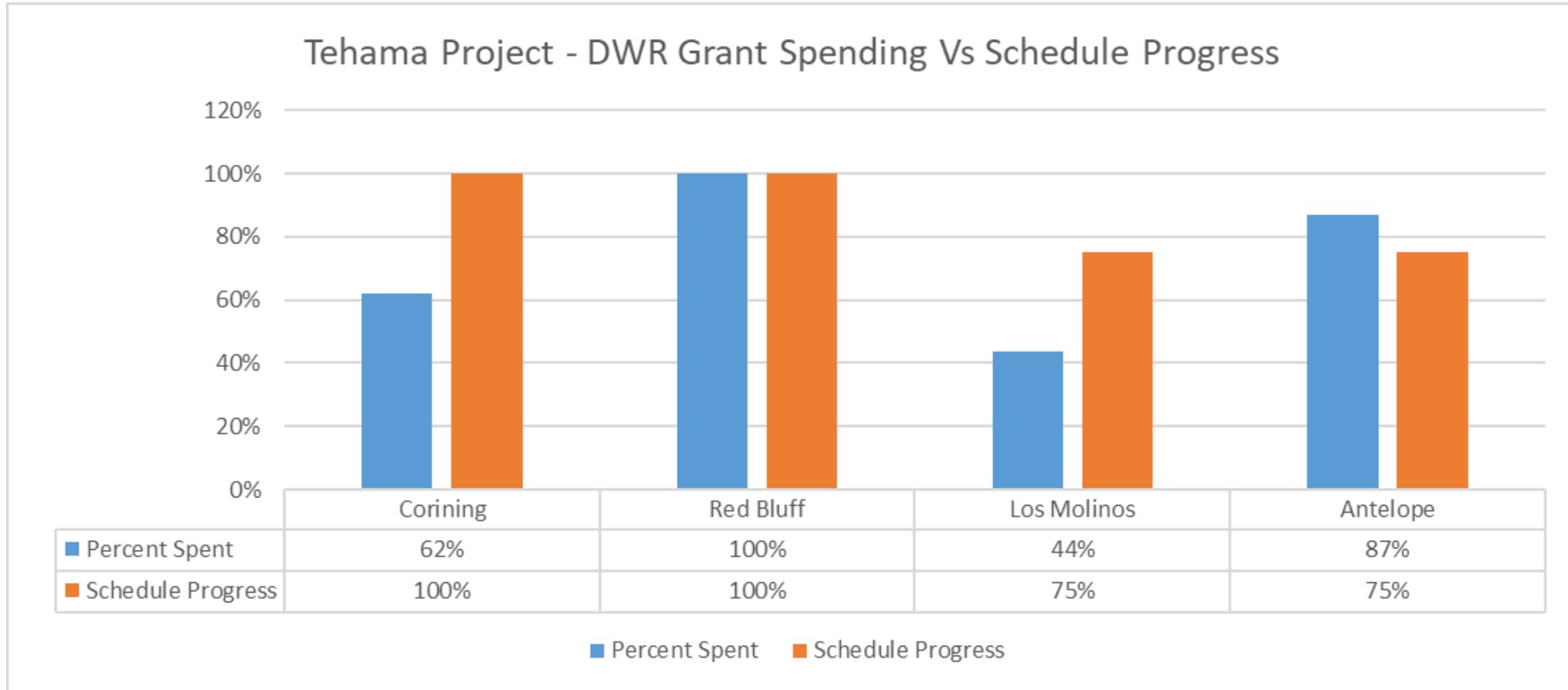
Tehama GSA – DWR Grant Funds Summary

DWR Budget Amount



- Grant Admin.
- GSP Implementation
- Monitoring Network Enhancements
- Recharge Projects

DWR Grant Implementation – Status March 2026



Tehama GSA: Red Bluff = 100% complete by 3.31.26; Corning = 70% complete by 3.31.26. Los Molinos and Antelope DWR agreements extended to 12.31.26, Corning amendment pending.

Demand Management Program Update

Everyone in Tehama County depends on the same groundwater. A successful demand management program must work for farmers, ranchers, and households alike. We're designing a program that finds that balance.

What the Community Told Us...



110

Community Survey Responses
Across all county subbasins
Aug – Oct 2025



Keep Costs & Fees Low

Affordability is shared concern. Households, farmers, and ranchers all raised it as top priority.



Protect Small Farms & Rural Residents

Tailor approach to actual situation and protect those most vulnerable, regardless of use type.



Ensure Fairness Across All Users

Target solutions where they're needed most. Proportionate, not one-size-fits-all.

How We're Responding: A Two-Phase Program

PHASE 1: Starting ~2026

Voluntary & Incentive-Based

- Water efficiency programs & best management practices
- Groundwater recharge and land repurposing programs
- Intent is no restrictions (possible earlier actions for worst cases if conditions require it)
- Outreach and action move forward together, not in sequence

If voluntary measures aren't enough...

PHASE 2: 2032 and beyond, *IF needed*

Targeted Mandatory Measures

- Only in areas of most severe groundwater stress
- Reviewed & updated at least every 5 years

Demand Management - Where We Are and What's Coming Next



Stay Involved:

Sign up for the District email list · Attend Groundwater Commission or Board meetings · Follow DM Working Group meetings

<https://tehamacountywater.org/demand-management-ad-hoc-working-group/>

Well Mitigation Program

Background

- The GSA will mitigate dry well conditions caused by groundwater management actions (not conditions caused by drought or normal wear and tear)
- Program parameters were developed by a Working Group including Groundwater Commissioners, Farm Bureau, Environmental Health
- Separate from existing drought relief programs (e.g., North Valley Community Foundation water deliveries)

Status & Timeline

Program still in development – not ready for applications

January 1, 2026: Adopted by GSA/Board of Supervisors

Within 6 months: Board to approve implementing ordinances

Within 6 months: GSA staff to develop eligibility criteria and application process

Well Mitigation – What the Program Provides

- **Educational information** to well owners before applying and paying an application fee
- **Initial assessment** and **eligibility determination** (application fee required)
- Coordination support for **temporary drinking water**
- **Monetary-capped reimbursement** (up to \$40,000, depending on funding availability) to the owner for:
 - Deepening or construction of a replacement well
 - May or may not include equipment depending on age of the well
 - Required well abandonment/sealing

*This program is for all wells (domestic, agricultural, and others)
There is no income threshold to qualify*



Resources Available & What You Can Do

These slides will be posted on tehamacountywater.org where the links can be accessed

Topic	What you can do
Dry Well Mitigation Tehama County Resources: https://tehamacountywater.org/sgmp-round2grant/	File a dry well report with CA Department of Water Resources at https://mydrywell.water.ca.gov/report/
Well Registration More Info	Register your well so the County has accurate information and fees are correctly assessed – this can save you money Link to well registration form
Water District Connection	If you're within a water district and not connected, get connected! <i>Email us at TehamaGSA@tcpw.ca.gov</i>
Volunteer Monitoring Program More Info: Antelope subbasin Corning Subbasin	Volunteer your well to monitor groundwater levels, and gain insight into your own well operations. Link to learn more or sign up
Landowner Recharge More info about groundwater recharge More info about recharge projects in Tehama County	Tehama GSA is always looking for ideas for recharge projects and landowners who want to help. Link to submit recharge ideas



FEE STUDY

SGMA FUNDING STRUCTURE
UPDATES

Tehama GSA – Annual GSP Implementation Fees

Why Are Fees Needed?

2021-2026:
\$19M in grants
covered GSA costs.

2027-2042:
Sustainable Fees are
needed with no grant
funds available.

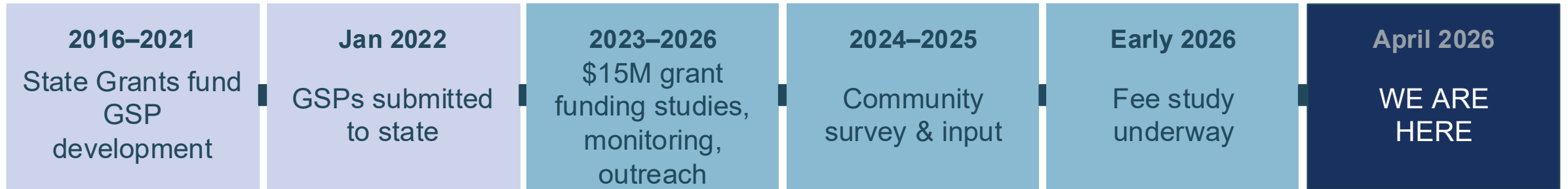


261 GSAs in California

- Medium;
- High; and
- Critically Over
drafted subbasins.

Most GSAs have long
term fees or charges in
place to achieve SGMA
compliance with local
control.

Tehama County SGMA Financial History



In the next few months....

- **TODAY: Public Meetings**
- **APRIL–MAY 2026:** Final fee study recommendations presented to Commission and Board.
- **SUMMER 2026:** Public hearing and formal fee adoption process. You will be notified by mail and can formally comment or protest.
- **MID-2026:** Current state grants expire. Local fee must be in place to continue program.
- **2027:** Fees would first appear on property tax bills, if adopted.

Public Input – What we've heard from you

Venues for input

110+ Demand Management community survey responses

Stakeholder advisory working group meetings

Regular public comment at every Commission and Board meeting

Direct outreach to agricultural operators, domestic well owners, and ranchers

Public Meetings & Workshops

Community wants:

- Keep costs low
- Protect small farms and domestic wells
- Use fair, proportional charges
- Maintain local control
- Be transparent — tell you what things cost



Why We Can't Rely on Grants Forever

The grant era is ending

- State grants (Prop 1 & 68) funded our plans — no local cost to landowners
- \$15 million in implementation grants have funded monitoring wells, modeling, and recharge studies
- These grants expire by mid-2026
- State law requires a stable local funding source — grants are not a permanent solution

The alternative: State intervention

If we fail to fund a local plan, the State Water Board takes over:



Fees 5–10× higher

Every dollar goes to state overhead — nothing funds local projects



No local benefit

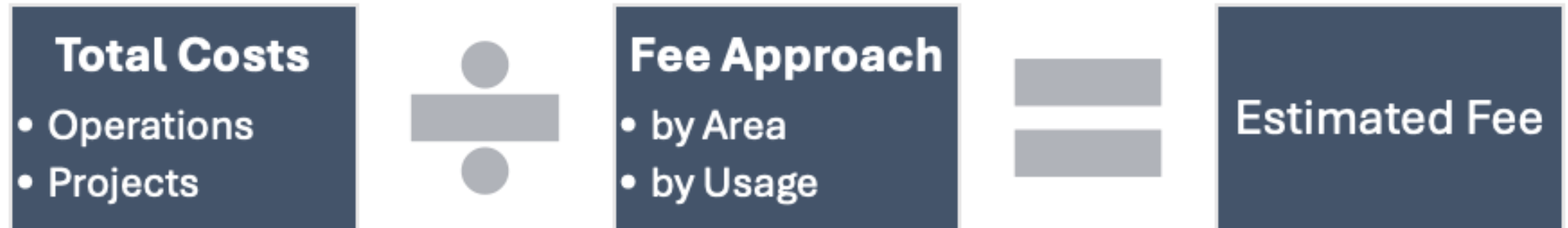
None of the money returns to Tehama County programs



Loss of local control

State decides what happens here — not your elected Board

Fee Development Process



Your fee pays for two things, designed separately

Projects & Management Actions (PMA) fee

Fixing the problem

Overdraft subbasins only

Includes:

- Groundwater recharge projects
- Dry well mitigation — help when wells go dry
- Voluntary incentive programs for farmers
- Demand management programs (if needed)

Administrative/Operations fee

Keeping the lights on

District-wide *or* to all subbasins

Includes:

- Staff time to run the program
- Annual monitoring and reporting to the state
- Legal support and compliance
- Data management and model updates
- Five-year plan updates required by SGMA

Where we are: options under study

PMA: Option 1

Minimum programs budget

Dry well mitigation + early voluntary projects

OR

PMA: Option 2

Full programs budget

Adds demand management cost recovery



Admin/Ops: Option A

Flat parcel fee

Same charge for every parcel, district-wide

OR

Admin/Ops: Option B

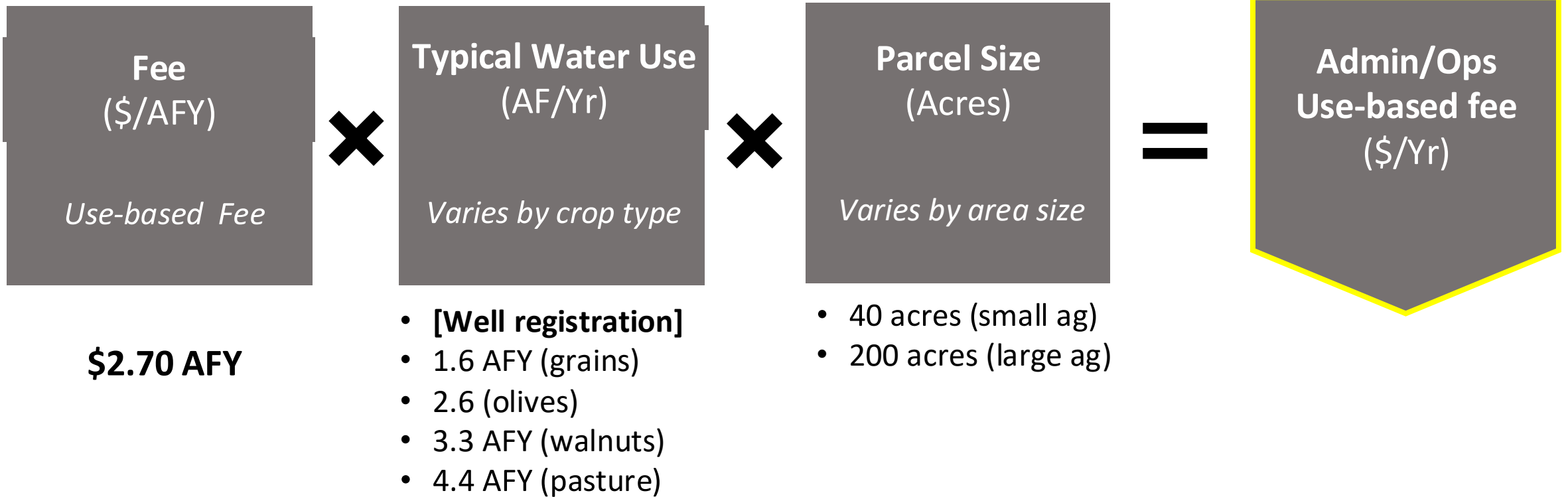
Volumetric use fee

Charge based on estimated groundwater use

Total Costs = PMA Fee (1 or 2) + Admin/Ops Fee (A or B)

Calculating the Volumetric Fees | Admin/Ops

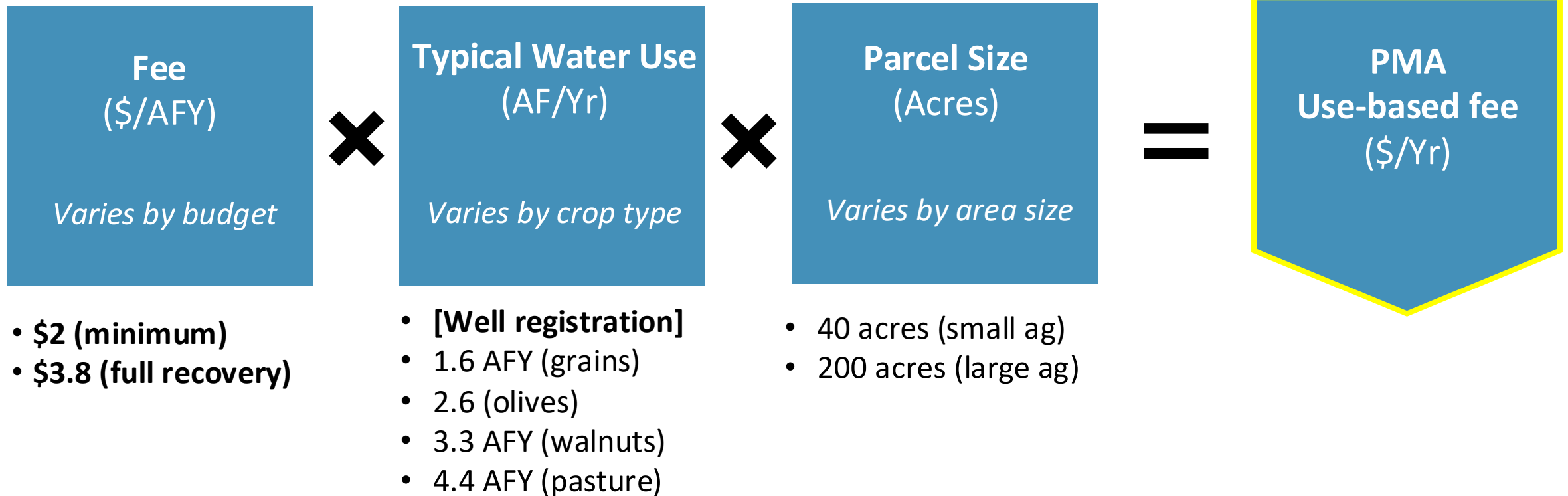
Admin/Ops Use-based fee option:



Example: 40 acres; growing olives
(\$2.70) (2.6AFY) (40 acres) = \$280.8 annual Admin/Ops fee

Calculating the Volumetric Fees | PMAs

PMA Use-based fee options (minimal or full budget)



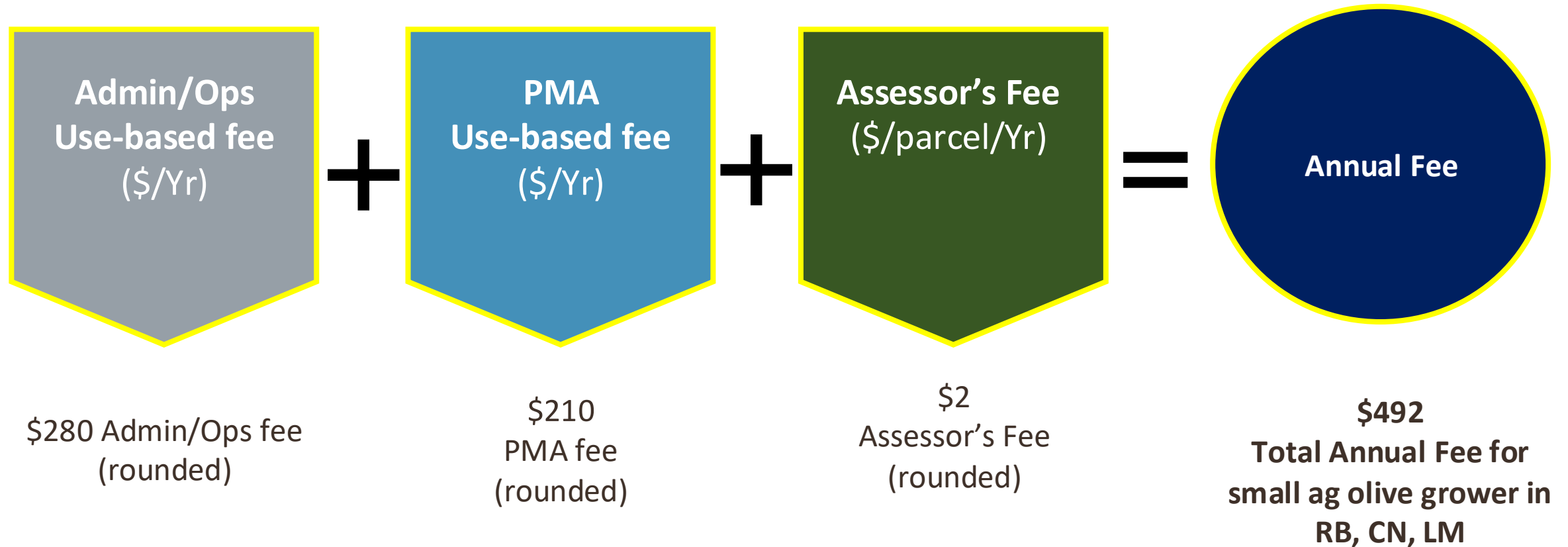
Example: 40 acres; growing olives; in overdrafted basin (CN, RB, LM);

using minimum budget

(\$2.00) (2.6 AFY) (40 acres) = \$208 annual PMA fee

Calculating the Volumetric Fees | Totals

Example: 40 acres; growing olives; in overdrafted basin (RB, CN, LN); using minimum budget



Preliminary estimates only — final figures expected in April/May (presented to Commission and Board)

What does this mean for you?

⚠ ALL NUMBERS BELOW ARE PRELIMINARY ESTIMATES – NOT FINAL AMOUNTS

User type	PMA fee (prelim.) Volumetric only, choosing b/w smaller or larger budget <i>(Overdrafted basins only)</i> ~\$2.00 AFY	Admin/Ops fee (prelim.) Choosing b/w based on parcels or volumetric	TOTAL (PMA + Admin/Ops) Approx. annual fee range <i>(Overdrafted basins only)</i> (Add \$2 Assessor's Fee)
Urban Residential	\$0 <i>(not irrigating)</i>	Parcel-Based: ~\$30-40/yr	~\$3 – \$40 per year
		or if volumetric: ~\$3-5+	
Rural Residential	\$0 <i>(not irrigating)</i>	Parcel-Based: same flat fee	~\$15 – \$40 per year
		or if volumetric: ~\$15-20+	
Commercial	~\$30-40+	Parcel-Based: same flat fee	\$60 – \$80 per year <i>(Lower in non-overdrafted basin)</i>
		or if volumetric: possibly ~\$30-40+	
Small agricultural operation (Ave. 40 acres)	For 40 acres: ~\$130-400/yr (crop type varies)	Parcel-Based: same flat fee	~\$380 – \$800 per year (40 acres, crop type varies) <i>(Lower in non-overdrafted basin)</i>
		or if volumetric: (40 acres: ~\$175-475/yr)	
Large agricultural operation (Ave. 200+ acres)	For 200 acres: ~\$640–1,800/yr (crop type varies)	Parcel-Based: same flat fee	~\$670 – \$4175 per year (200 acres: crop type varies) <i>(Lower in non-overdrafted basin)</i>
		or if volumetric: (200 acres: ~\$865–2,375/yr)	

These are ballpark ranges only. Final amounts depend on fee method chosen and fee study results

Your chance to weigh in — don't miss it

1

Register your well now

Your well registration data determines your fee estimate. Unregistered wells get charged based on zoning assumptions, not actual use. Register at TehamaCountyWater.org.

Ongoing

2

Public workshops

Dedicated sessions to present fee options, answer questions, and collect public input before the Board votes.

April 1 & 2, 2026

3

Board of Directors: Fee Report Approval

Board – fee report

April 2026

4

Public mailers

All residents receive mailers on approved fee report

May 2026

5

Board of Directors: public hearing, BOD vote

Public hearing required. You can formally comment or protest before any fee is adopted.

June 2026

6

If adopted, you'll be notified

All affected parties receive a written notice explaining their fee estimate and how to appeal.

After adoption

What's Next and Staying Involved

Upcoming Tehama County Meetings

- **April 8** - Groundwater Commission
8:30 am in Board Chambers Room
727 Oak St., Red Bluff
- **April 23** - Flood Control Board of Directors
10:00 am in Board Chambers Room
727 Oak St., Red Bluff

Other Upcoming Dates

June 30 - Mandatory well registration deadline

Connect with us

- Join the Interested Parties email list at <https://tehamacountywater.org/gsa/> or by emailing TehamaGSA@tcpw.ca.gov
- Follow Tehama County Flood Control & Water Conservation District on Facebook
- District Staff office hours:
Mon-Thur, 7:30a-4:30p
1509 Schwab Street, Red Bluff



Thank You!

Q&A/Discussion

- Stick around for more discussion
- Contact us: (530) 690-0700 or TehamaGSA@tcpw.ca.gov

Reminders:

- Presentation slides & a recording of this meeting will be posted to tehamacountywater.org/meetings/



Participation Protocols

Today we are...

- Aiming to hear from everyone – please be concise
- Working toward shared understanding – ask questions and listen to understand
- Capturing the public's thoughts
 - Use the mic
 - Submit written comment
 - Email tehamagsa@tcpw.ca.gov