

MANAGING OUR GROUNDWATER  
FOR THE FUTURE



TEHAMA COUNTY  
FLOOD CONTROL AND WATER CONSERVATION DISTRICT

# Tehama County Sustainable Groundwater Management Updates

Public Meetings

April 1 & 2, 2026

6:00 – 8:00 PM

[TehamaCountyWater.org](http://TehamaCountyWater.org)

# Meeting Objectives

## COMMON TERMS

SGMA (“Sigma”): Sustainable Groundwater Management Act

GSA: Groundwater Sustainability Agency

GSP: Groundwater Sustainability Plan

PMAs: Projects & Management Actions

- Educate the public on SGMA requirements and implementation, current groundwater conditions, and overdraft estimates.
- Provide an update on the projects and management actions underway to help achieve long-term groundwater sustainability in Tehama County, including demand management, recharge, and dry well mitigation.
- Share the latest information on grant spending and fee development to pay for SGMA administration and project implementation.
- Receive public input on all of the above.
- Highlight opportunities to stay involved and improve public engagement going forward



---

# AGENDA

**6:00pm** Open and Welcoming Remarks; Agenda Review

**6:10pm** Where We Are: GSP Implementation & Groundwater Conditions

**6:30pm** What We're Doing: Updates on Actions

**6:45pm** How We're Funding This: County Fee Study Update

**7:05pm** Next Steps & Staying Involved

**7:10pm** Questions, Discussion, Public Input

**8:00pm** Adjourn



# Meet The Project Team

**Convener:** Tehama County Flood Control & Water Conservation District



**TEHAMA COUNTY**  
FLOOD CONTROL AND WATER CONSERVATION DISTRICT

- Justin Jenson
- Adriana Langarica
- Lena Sequeira

**Technical Consultant:** Luhdorff & Scalmanini Consulting Engineers (LSCE)



- Jacques DeBra
- Will Anderson

**Facilitation Support:** Consensus Building Institute (CBI)

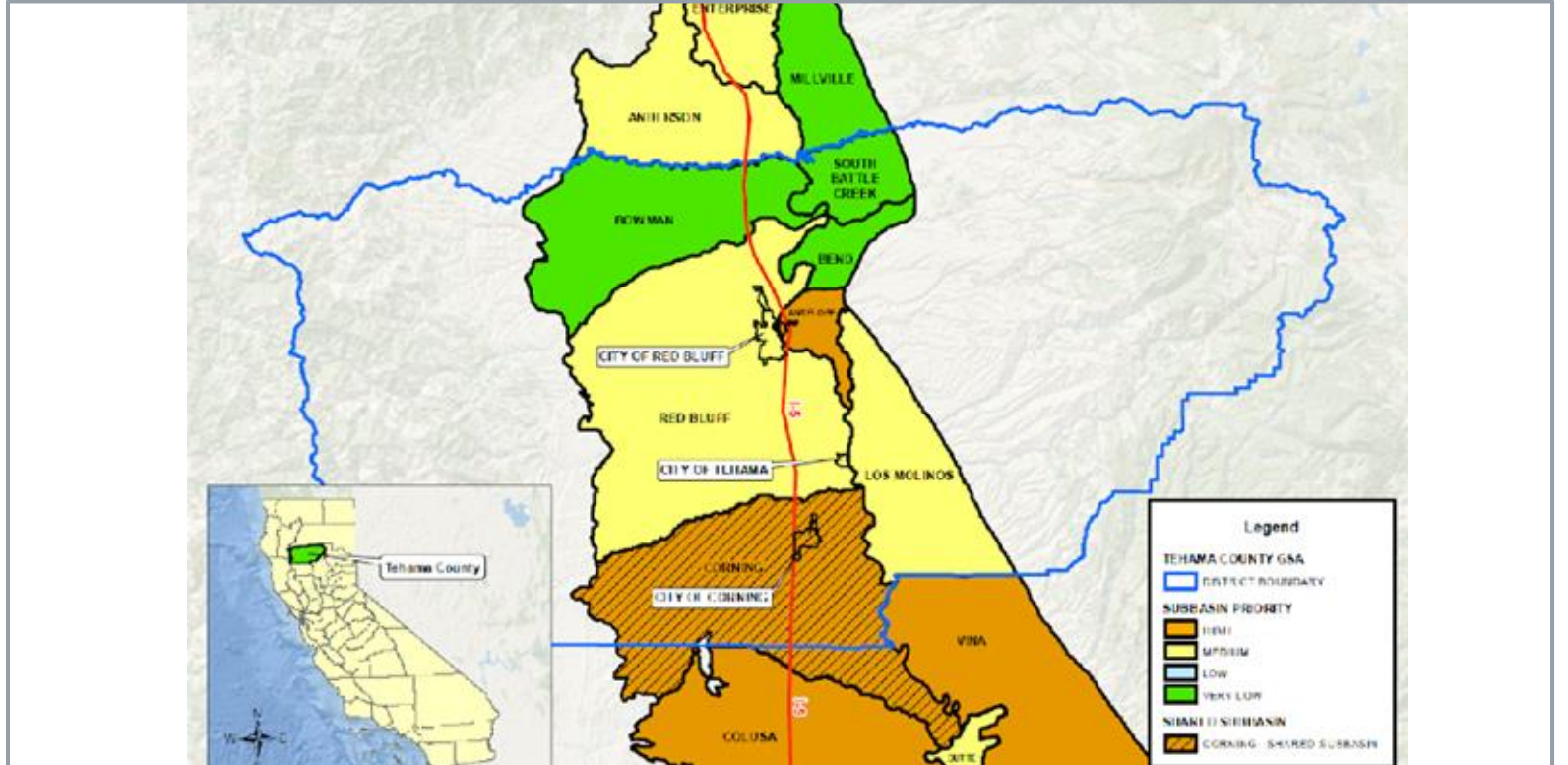


- Sophie Carrillo-Mandel
- Stephanie Horii

# Participation Protocols

*Today we are...*

- Aiming to hear from everyone – please be concise
- Working toward shared understanding – ask questions and listen to understand
- Capturing the public’s thoughts
  - Use the mic
  - Submit written comment
  - Email [tehamagsa@tcpw.ca.gov](mailto:tehamagsa@tcpw.ca.gov)
- In a meeting with our neighbors – *introduce yourself to the person next to you*



# Where We Are

GSP Implementation & Groundwater Conditions Updates

## SGMA Basics



The Sustainable Groundwater Management Act (SGMA) -- law was passed in 2014



Values Local Control  
Groundwater Sustainability Agencies (GSAs)



Management plans = Groundwater Sustainability Plans (GSPs)



GSPs submitted to the State by January 31, 2022



Sustainability must be achieved within 20 years  
(by 2042)

# What Is the Purpose of SGMA?

- Promote sustainable management of groundwater basins
- Enhance local management to protect our groundwater; State will step in if necessary
- Improve data collection and understanding of groundwater resources and management
- Avoid or minimize undesirable results to groundwater

## Undesirable Results



Lowering  
GW Levels



Reduction  
of Storage



Land  
Subsidence



Degraded  
Quality



Surface Water  
Depletion



Seawater  
Intrusion

# Tehama County GSA: Governance

## Guidance & Recommendations Groundwater Commission

11 members representing cities, private pumpers, surface water and groundwater agencies, and County Supervisorial Districts

Meets 4th Wed. of the month at 8:30 am

## Final Decision-Making District Board of Directors

Comprised of 5 County Board of Supervisors:  
Hansen, Burroughs, Walker, Jones, *vacant*

Meets 3rd Monday of the month at 11am

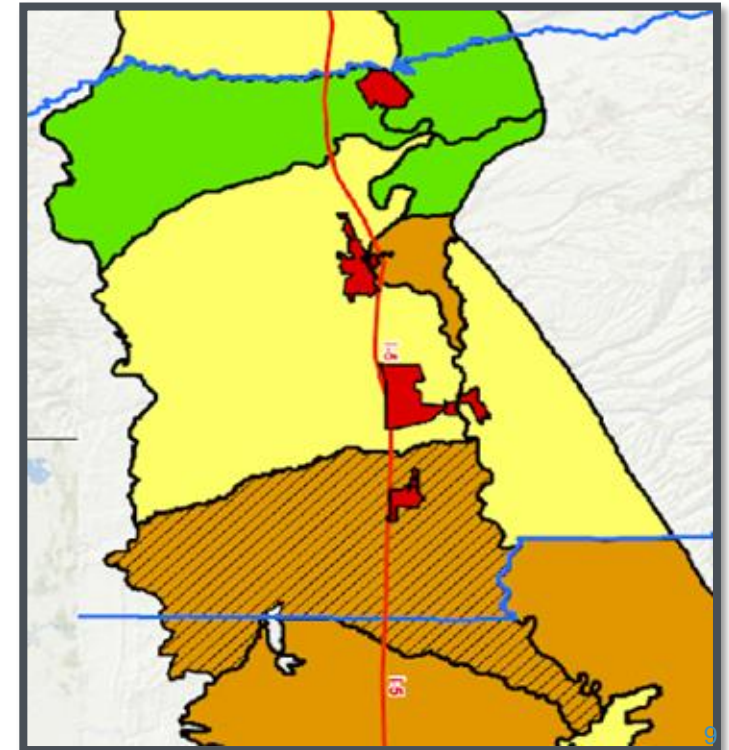
## Support District Staff & Consultants

District staff and consultants receive guidance and input from the Board, Commission, and stakeholders.

District Office and Hours: 1509 Schwab St,  
M-Th, 7:30a-4:30p

## Engagement Throughout Stakeholders and General Public

The GSA aims to raise awareness and engage stakeholders and the general public on GSP elements and SGMA implementation. Continued participation is essential to achieve sustainability.



Meeting Info: [TehamaCountyWater.org](http://TehamaCountyWater.org)

# Corning Subbasin



TEHAMA COUNTY  
Flood Control and Water Conservation District



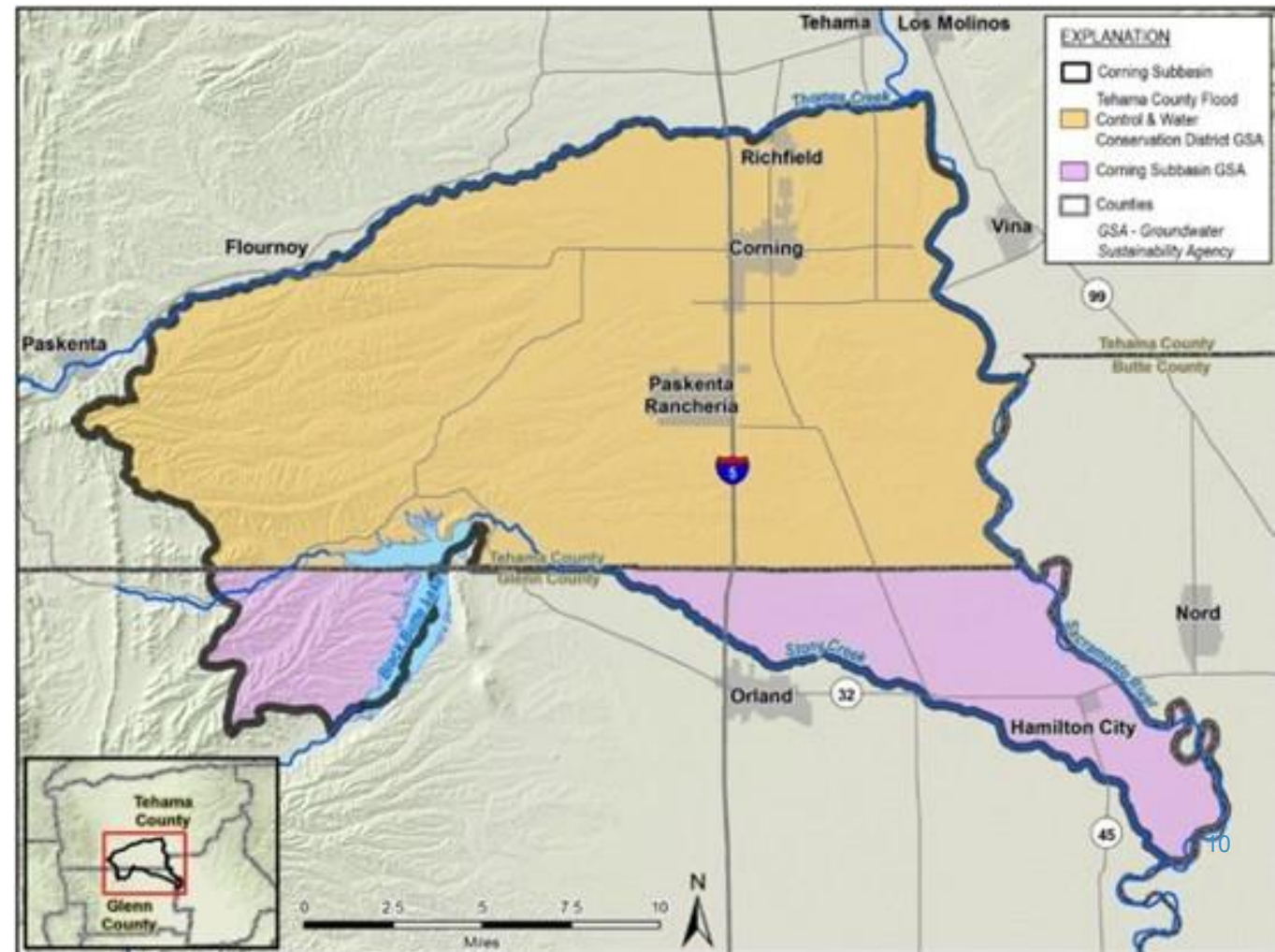
Co-managed by 2 GSAs

- Tehama County GSA
- Corning Sub-basin GSA
  - Glenn County
  - Glenn-Colusa Irrigation District
  - Monroeville Water District

1 GSP developed

Corning Subbasin Advisory Board (CSAB) meets the 1<sup>st</sup> Wednesday of each month

[CorningSubbasinGSP.org](http://CorningSubbasinGSP.org)



# SGMA Implementation Timeline

- [GSPs on website](#)
- Mailing list for updates

TehamaCountyWater.org



Occurring throughout:

- Conduct Outreach & Engagement
- Measure Progress, Evaluate, and Modify<sup>11</sup>

# PAST & ONGOING OUTREACH

- Newsletters
- Fact Sheets & Info Resources
- Public Meetings & Workshops
- Grant Updates Webpage
- Demand Management Survey
- Spanish-Language Radio & Surveys


<https://tehamacountywater.org/sgmp-round2grant/>



## GROUNDWATER DEMAND MANAGEMENT

### Join the Antelope Subbasin GSA Community Domestic Monitoring Program

*The Antelope Subbasin is establishing a monitoring program to track water levels in 25 volunteer wells over a five-year period. Thanks to grant funding, all monitoring equipment, installation, and data management are covered.*



#### Why Do

- Wells at threatened businesses
- State law requires groundwater management
- Four Tehama County Subbasins: Corning, Red Bluff, Los Molinos, and Antelope

Volunteers provide valuable information on groundwater level data. Confidential groundwater data is informed and used to improve groundwater management.

#### Sustainable Groundwater Management Implementation

### Fall 2025 Newsletter


| Corning, Red Bluff, Los Molinos, and Antelope Subbasins



The California Department of Water Resources (DWR) awarded \$15 million to the Corning, Red Bluff, Los Molinos, and Antelope Subbasins for the Tehama County Flood Control and Water Conservation District GSA (TCFCWC District Sub-basin GSA (CSGSA)). The funding supports implementation of the four Groundwater Sustainability Plans (GSPs) which advances critical projects and management actions toward long-term groundwater sustainability. **This newsletter provides updates from the GSAs and the technical consulting team led by Luhdorff & Scalmanini Consulting Engineers.** They work to complete the grant-funded projects during 2026.

#### Updates on Recharging Groundwater

Managed Aquifer Recharge (MAR) projects are gaining momentum across the region, with new permits, infrastructure, and landowner partnerships well underway. Here are the latest updates from the Corning, Red Bluff, and Los Molinos Subbasins:



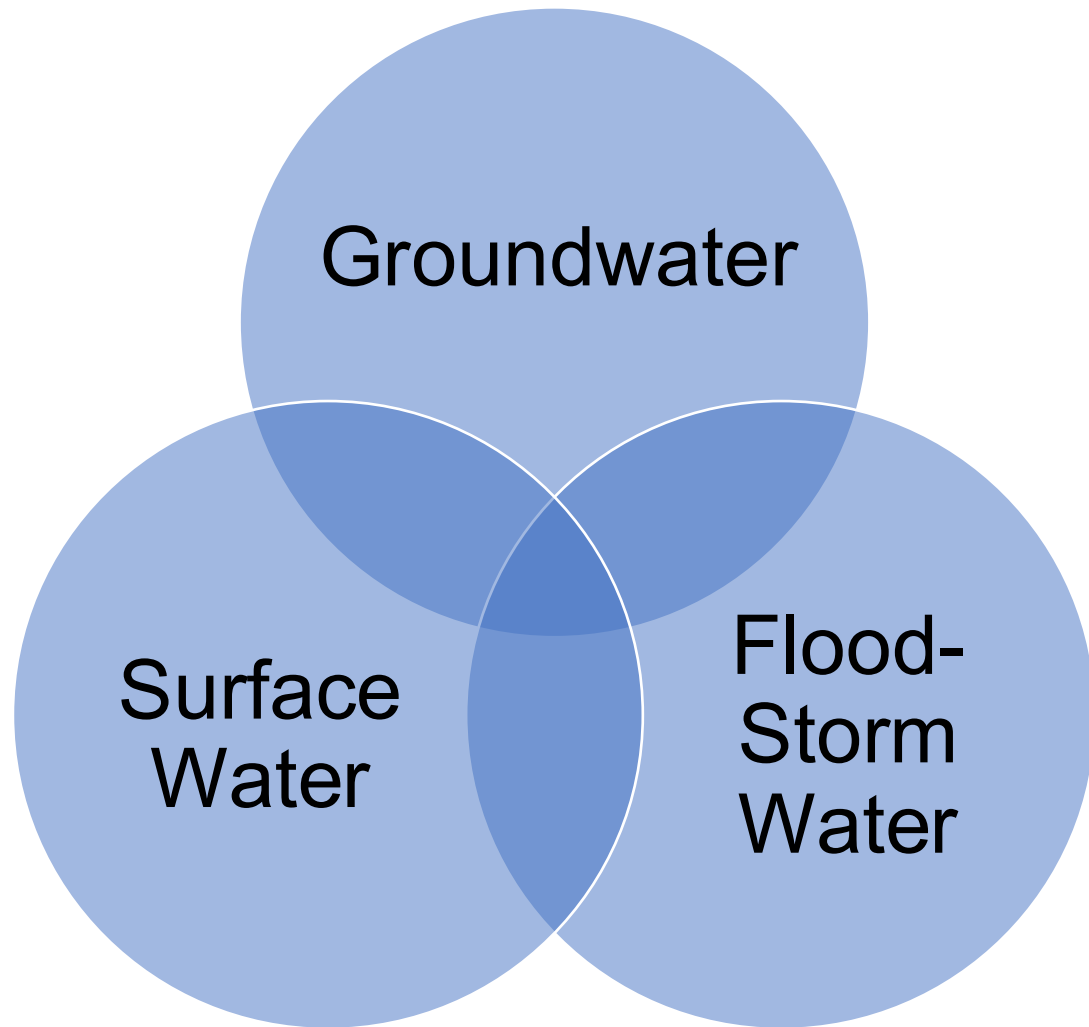
**Corning:** Five-year recharge permit applications

# Tehama GSA Groundwater Conditions & Annual Reporting

April 1 and 2, 2026, Public Workshops



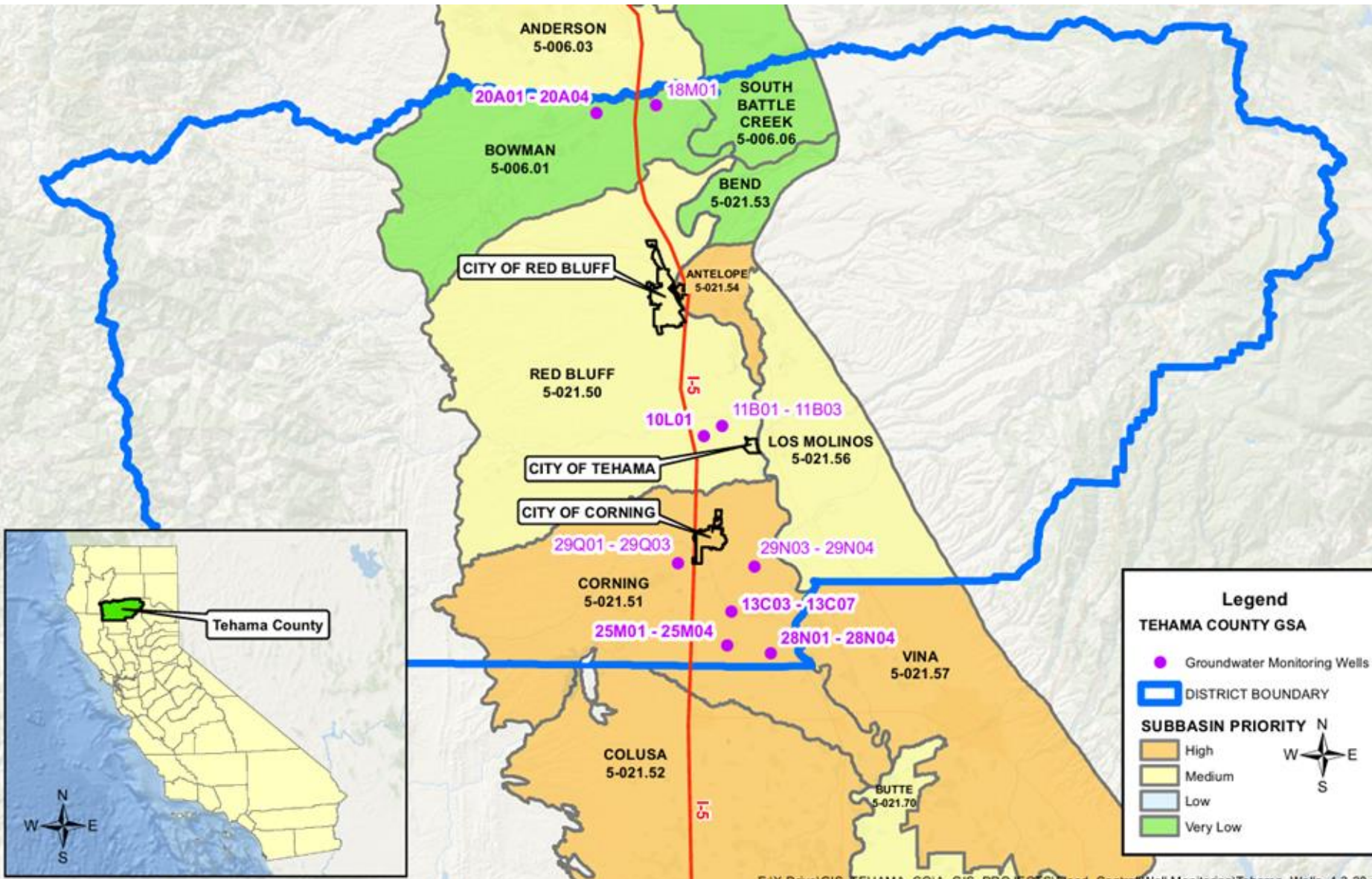
# Water Conditions – tracked by the TCFCWCD



- Groundwater Conditions
  - Water Levels
  - Water Quality
- Surface Water Conditions
  - Central Valley Project (CVP) Water Supplies
  - Other Water Rights
- Flood-Storm Conditions
  - Flood-Storm Flows
  - Peak Flows/Events

Water Conditions - based on best available information!

# Water Conditions – Groundwater overdraft



- Existing Monitoring Network Location Map (2024)
- Corning Subbasin monitoring wells added
  - 5 M-C Wells
  - 10 Shallow Wells
- Antelope Subbasin monitoring wells added
  - 3 M-C Wells
  - 5 Shallow Wells



We need YOU to volunteer to monitor your well!

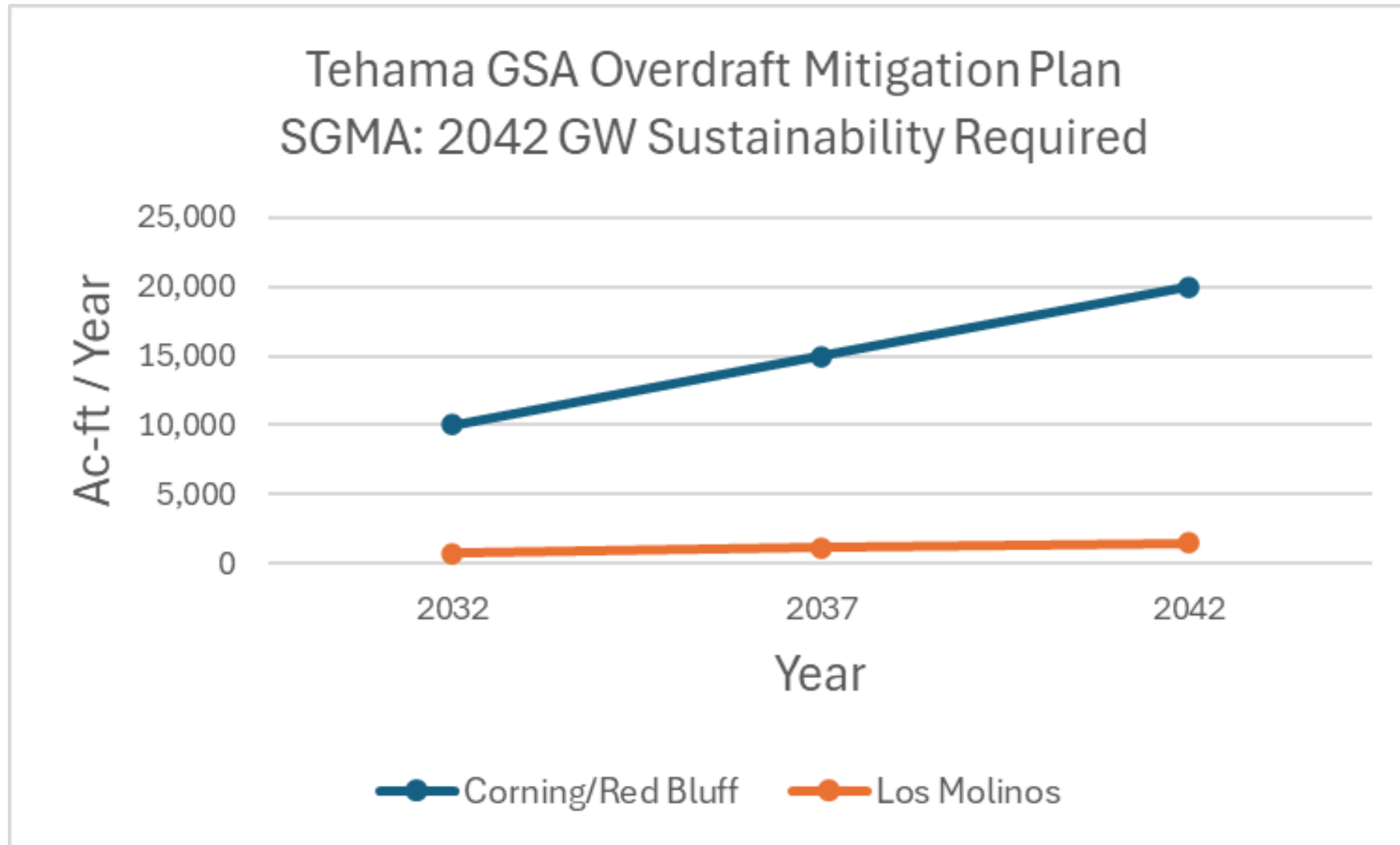
# Water Conditions – indicate groundwater overdraft

## Groundwater Overdraft – Observed in 3 Subbasins

	<u>Avg Annual. Overdraft To Mitigate</u>	<u>Next Update Overdraft To Mitigate</u>
<b>Corning Subbasin</b>	20,000 afy	2027 GSP Update
<b>Red Bluff Subbasin</b>	20,000 afy	2027 GSP Update
<b>Los Molinos Subbasin</b>	1,500 afy	2027 GSP Update

Subbasin overdraft figures will be updated at least every 5 years based on updated water condition data and observed supply and demand project implementation impacts.

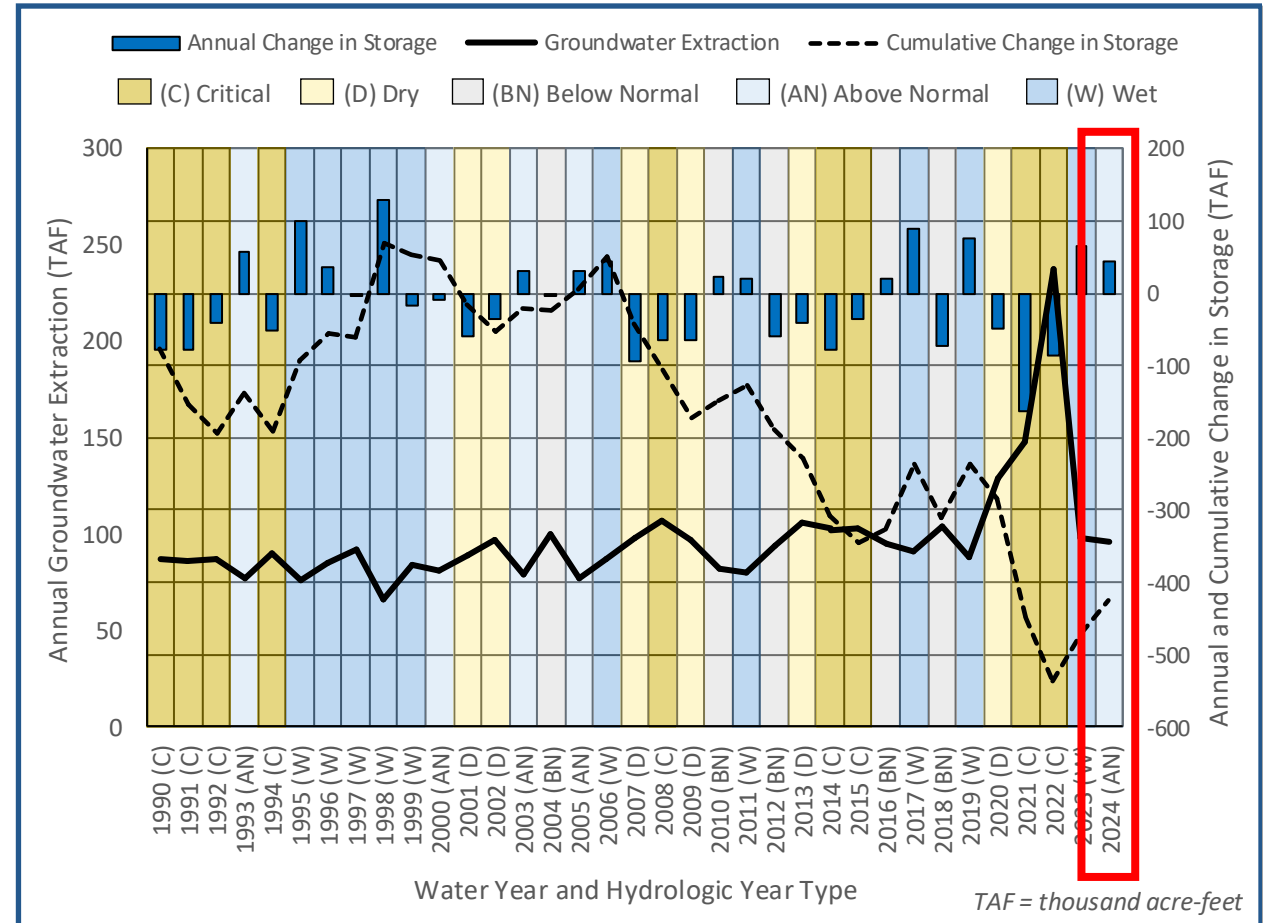
# Water Conditions – indicate groundwater overdraft



# Water Conditions – Red Bluff groundwater overdraft

**Table 4-1. Change in Groundwater Storage**

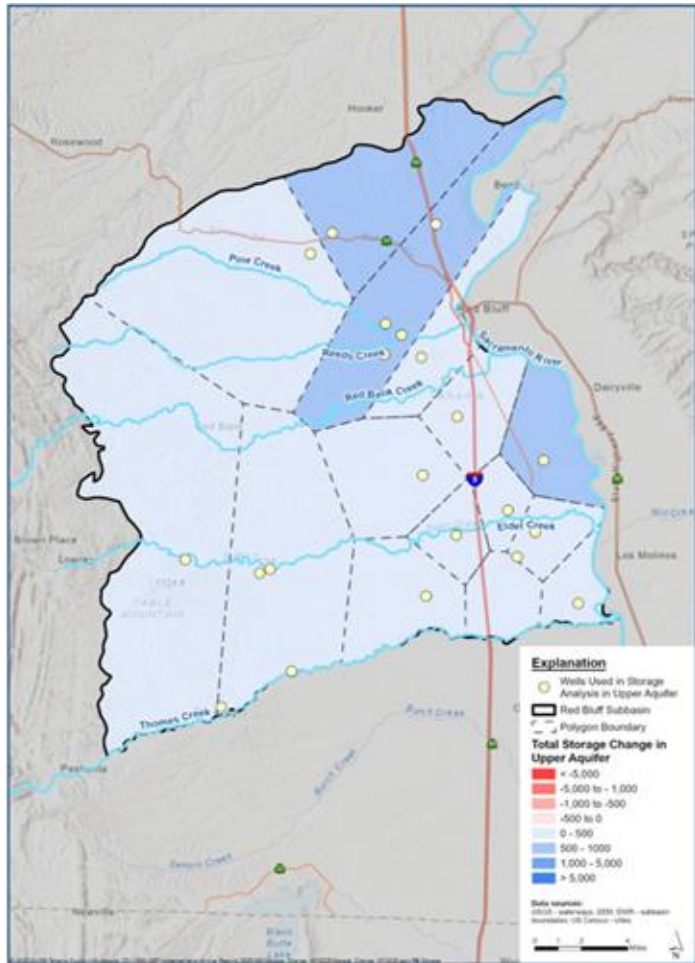
Water Year & Type	Groundwater Extraction (af)	Annual Groundwater Storage Change (af)	Cumulative Groundwater Storage Change (af)
2010 (BN)	93,400	19,000	-323,400
2017 (W)	90,600	88,000	-237,400
2018 (BN)	104,200	-74,000	-311,400
2019 (W)	88,300	75,000	-236,400
2020 (D)	129,300	-49,000	-285,400
2021 (C)	148,100	-164,000	-449,400
2022 (C)	237,300	-87,000	-536,400
2023 (W)	98,000	66,000	-470,400
<b>2024 (AN)</b>	<b>95,800</b>	<b>44,800</b>	<b>-425,600</b>
<b>Historic Averages (2000-2023)</b>			
2000-2023 (23 years)	97,094	-13,835	
W (9 years)	84,680	54,010	
AN (4 years)	78,475	26,875	
BN (5 years)	95,060	-18,600	
D (6 years)	102,617	-57,667	
C (9 years)	116,611	-75,444	



- Total (upper and lower aquifer) change in storage: 44,800 AF
- Upper Aquifer: 14,100 AF; Lower Aquifer: 30,700 AF

# DWR Annual Reports – Red Bluff (WY2025)

## Lack of Full Recovery in Wet Year – Lower Aquifer

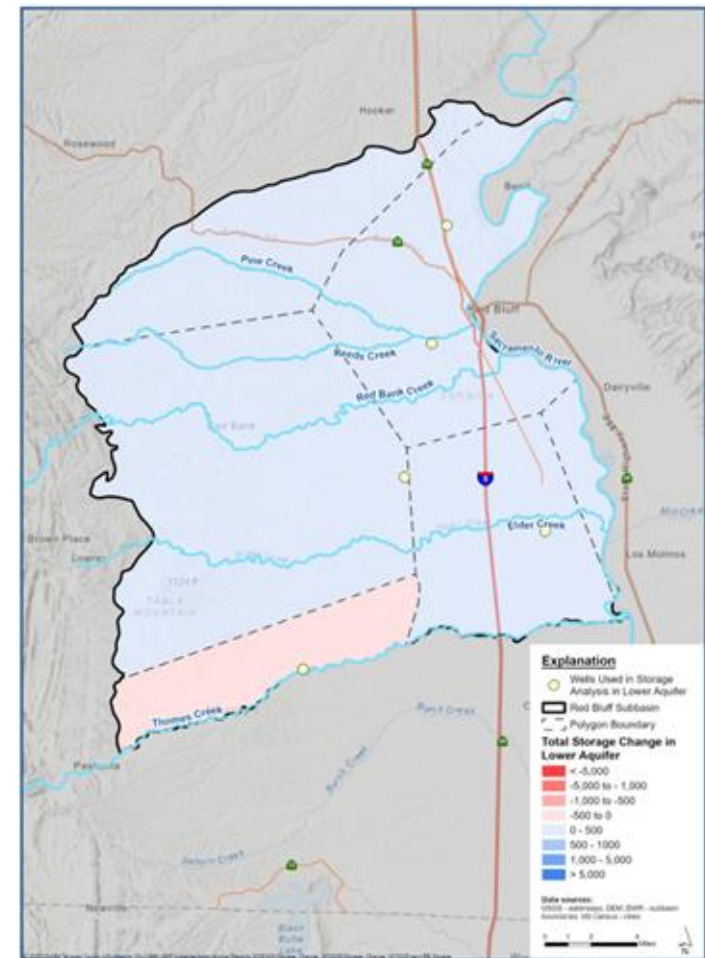


Upper Aquifer

Red Bluff  
Subbasin

Change in GW  
Storage

Spring 2024 -  
Spring 2025



Lower Aquifer

# Water Conditions – Managing Groundwater Overdraft

Achieving Groundwater Sustainability – With Flexibility

Striking a balance between cost-effectively increasing supplies and reducing demands.

Schedule:

2026 – Progress Begins

2042 – SGMA Deadline



Working with landowners to establish local solutions to maintain local control.

# Water Conditions – Accessing Groundwater Data

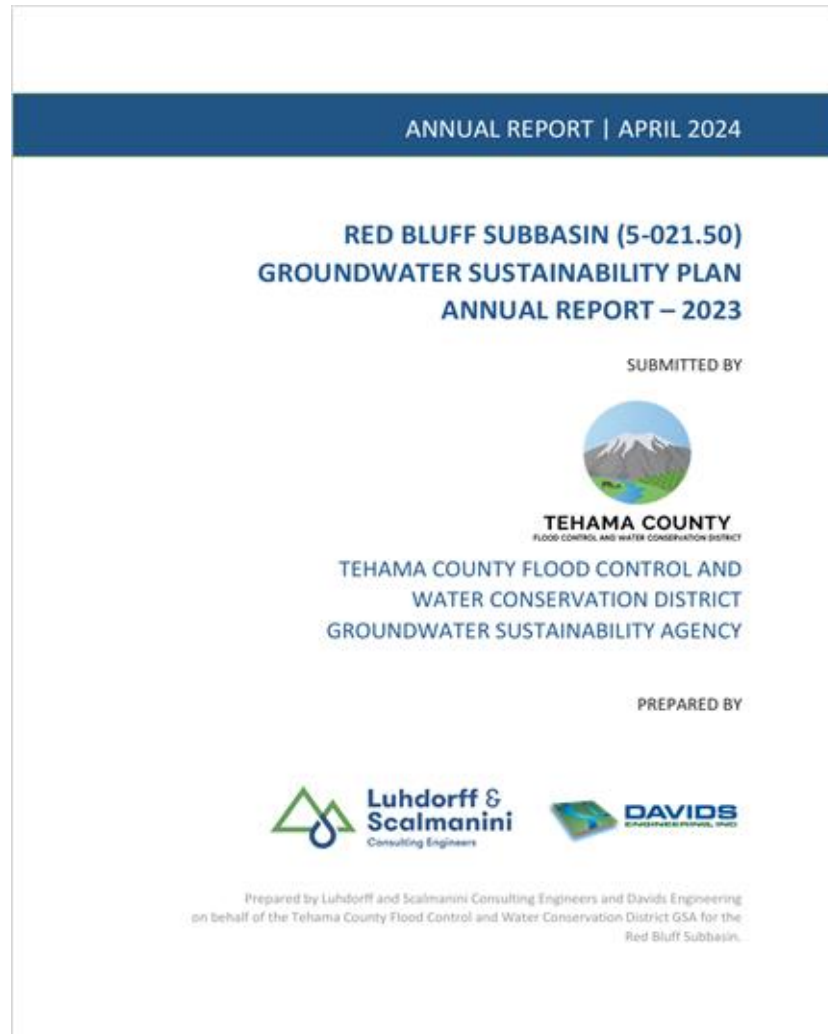
The screenshot shows the Hydrogi website interface. The top navigation bar includes: HOME, MEETINGS, **GROUNDWATER** (circled in red), FLOOD CONTROL, DROUGHT RESOURCES, RFPS/RFQS, and CONTACT. A dropdown menu is open under GROUNDWATER, listing: Groundwater Sustainability Agency, Groundwater Sustainability Plans, SGMP Round 2 Grant Updates, **Groundwater Level Monitoring** (circled in red), Agency Governance Structure, Groundwater Ordinances, and Groundwater Resources. Below the menu, four monitoring locations are displayed, each with a title, address, and a line graph showing groundwater levels over time. The locations are: Gerber East of (25N03W11B01), Capay Road @ Hall Road (23N03W13C03M – 23N03W13C07M), Bowman Road @ Evergreen School (29N04W20A01M – 29N04W20A04M), and Inghram Road @ Tehama-Colusa Canal (23N03W25M01M – 23N03W25M04M). Each graph plots 'DEPTH BELOW SURFACE (FT)' on the y-axis against time on the x-axis. A legend at the bottom of each graph identifies different monitoring wells.



**Groundwater Data is available on the GSA website**

<https://tehamacountywater.org/gsa/groundwater-level-monitoring/>

# DWR Annual Reports – SGMA Compliance Action



- Medium, High and Critically Drafted subbasins are required to prepare and submit Annual Reports to DWR to maintain compliance with SGMA regulations.
- Tehama GSA prepares Annual Reports for Corning, Red Bluff, Los Molinos, Antelope, and Bowman subbasins.
- Annual Reports for Water Years 2021, 2022, 2023, 2024, and 2025 have been prepared and submitted to DWR by the April 1 annual deadline.

# DWR Annual Reports – SGMA Compliance Action

## Typical Annual Reports Preparation Schedule

- Oct-Dec: Monitoring network data collection and analysis.  
Jan-Feb: Data evaluation and QA/QC.  
March: Preparation and GSA approval of Annual Reports.  
April: Submittal of approved Annual Reports to DWR.

## Future annual reports to include:

- Detailed descriptions of actions taken to avoid/reverse threshold exceedances.
- Specific PMAs to address unsustainable water supply areas.
- Improved monitoring data (seasonal lows, measurement dates, and reduced data gaps).

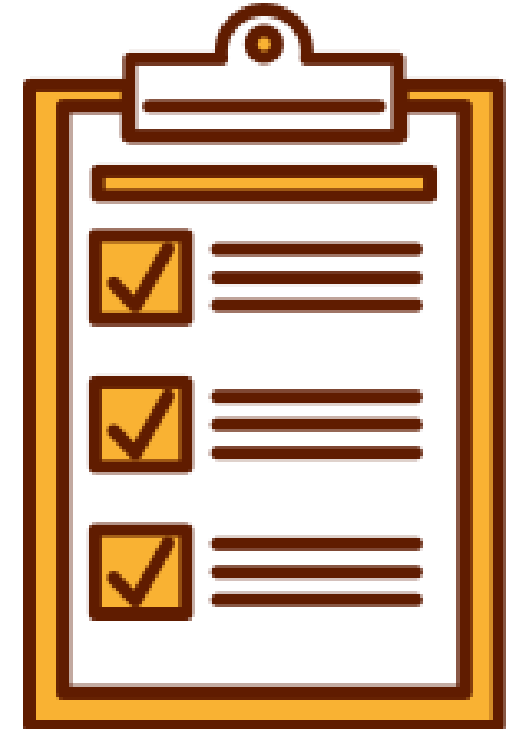


Tehama County Annual reports are available on the GSA website:  
<https://tehamacountywater.org/gsa/groupwater-sustainability-plans-public-draft/>

*Annual Reports from all GSAs statewide are available on the DWR website: <https://sgma.water.ca.gov/portal/gspar/submitted>*

# DWR SGMA Compliance – Report Card

SGMA Requirements	Purpose
Establish Local GSA	Long term local control
Develop Sustainability Indicators	Measurable Objectives & Min Thresholds Well Levels
Prepare Annual Reports	Groundwater conditions
Prepare Periodic Evaluations	Plan updates every 5 years
GSA Coordination	Within Tehama County With Neighboring Counties
<b><u>Local GSA – Other Costs To Achieve SGMA Compliance</u></b>	
Data Management	Data Collection Data quality control/integration
Special Studies-PMA Development	Sustainability Actions
Future Grant Funding Procurement	Reduce Future Local Costs



Tehama GSA: passing grade on SGMA compliance (2021-2026); future compliance will require local funding source.



# Overview of Actions

Grant spending

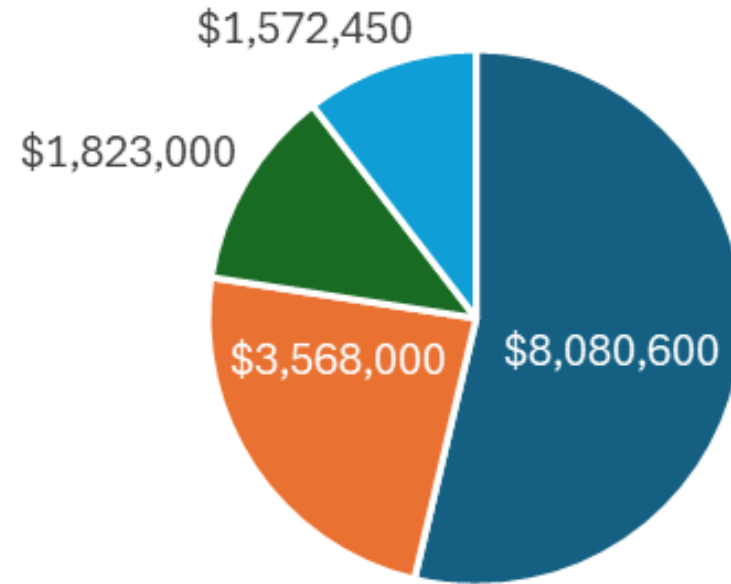
Managing demand for water

Other actions

- Increasing water supply (recharge)
- Mitigating dry wells
- Monitoring conditions

# Tehama GSA – DWR Grant Funds Summary

## DWR Grant Amount

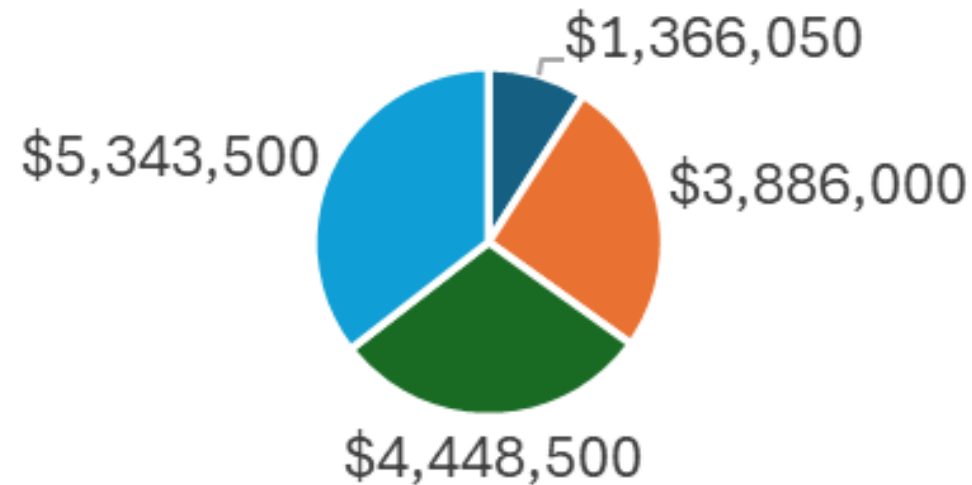


■ Corning ■ Red Bluff ■ Los Molinos ■ Antelope

<https://tehamacountywater.org/sgmp-round2grant/>

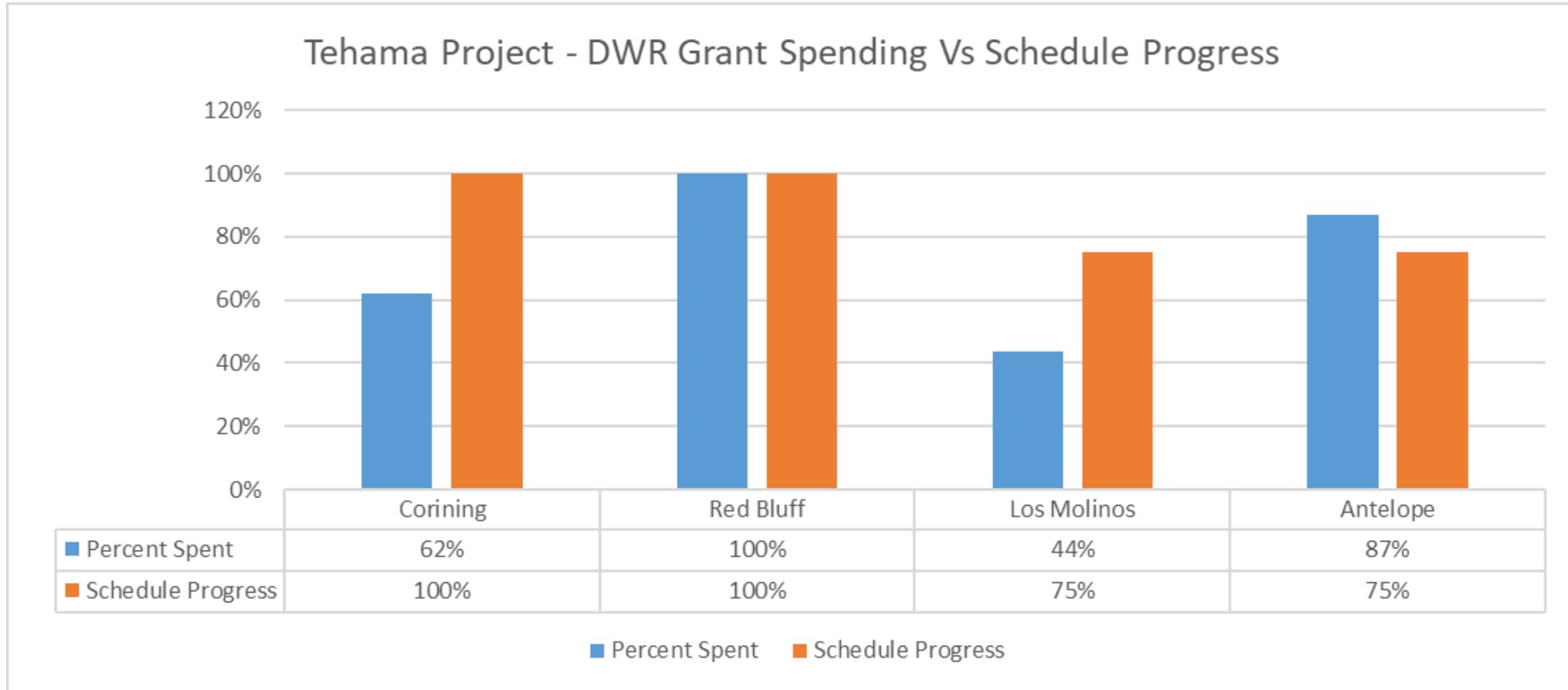
# Tehama GSA – DWR Grant Funds Summary

## DWR Budget Amount



- Grant Admin.
- GSP Implementation
- Monitoring Network Enhancements
- Recharge Projects

# DWR Grant Implementation – Status March 2026



Tehama GSA: Red Bluff = 100% complete by 3.31.26; Corning = 70% complete by 3.31.26. Los Molinos and Antelope DWR agreements extended to 12.31.26, Corning amendment pending.

# Demand Management Program Update

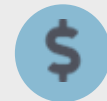
*Everyone in Tehama County depends on the same groundwater. A successful demand management program must work for farmers, ranchers, and households alike. We're designing a program that finds that balance.*

## What the Community Told Us...



110

**Community Survey Responses**  
Across all county subbasins  
Aug – Oct 2025



### Keep Costs & Fees Low

Affordability is shared concern. Households, farmers, and ranchers all raised it as top priority.



### Protect Small Farms & Rural Residents

Tailor approach to actual situation and protect those most vulnerable, regardless of use type.



### Ensure Fairness Across All Users

Target solutions where they're needed most. Proportionate, not one-size-fits-all.

# How We're Responding: A Two-Phase Program

## PHASE 1: Starting ~2026

### Voluntary & Incentive-Based

- Water efficiency programs & best management practices
- Groundwater recharge and land repurposing programs
- Intent is no restrictions (possible earlier actions for worst cases if conditions require it)
- Outreach and action move forward together, not in sequence

*If voluntary measures aren't enough...*

## PHASE 2: 2032 and beyond, *IF needed*

### Targeted Mandatory Measures

- Only in areas of most severe groundwater stress
- Reviewed & updated at least every 5 years

# Demand Management - Where We Are and What's Coming Next



## Stay Involved:

Sign up for the District email list · Attend Groundwater Commission or Board meetings · Follow DM Working Group meetings

<https://tehamacountywater.org/demand-management-ad-hoc-working-group/>

# Well Mitigation Program

## Background

- The GSA will mitigate dry well conditions caused by groundwater management actions (not conditions caused by drought or normal wear and tear)
- Program parameters were developed by a Working Group including Groundwater Commissioners, Farm Bureau, Environmental Health
- Separate from existing drought relief programs (e.g., North Valley Community Foundation water deliveries)

## Status & Timeline

*Program still in development – not ready for applications*

**January 1, 2026:** Adopted by GSA/Board of Supervisors

**Within 6 months:** Board to approve implementing ordinances

**Within 6 months:** GSA staff to develop eligibility criteria and application process

## Well Mitigation – What the Program Provides

- **Educational information** to well owners before applying and paying an application fee
- **Initial assessment** and **eligibility determination** (application fee required)
- Coordination support for **temporary drinking water**
- **Monetary-capped reimbursement** (up to \$40,000, depending on funding availability) to the owner for:
  - Deepening or construction of a replacement well
  - May or may not include equipment depending on age of the well
  - Required well abandonment/sealing

*This program is for all wells (domestic, agricultural, and others)  
There is no income threshold to qualify*



# Resources Available & What You Can Do

*These slides will be posted on [tehamacountywater.org](http://tehamacountywater.org) where the links can be accessed*

Topic	What you can do
Dry Well Mitigation Tehama County Resources: <a href="https://tehamacountywater.org/sgmp-round2grant/">https://tehamacountywater.org/sgmp-round2grant/</a>	File a dry well report with CA Department of Water Resources at <a href="https://mydrywell.water.ca.gov/report/">https://mydrywell.water.ca.gov/report/</a>
Well Registration <a href="#">More Info</a>	Register your well so the County has accurate information and fees are correctly assessed – this can save you money <a href="#">Link to well registration form</a>
Water District Connection	If you're within a water district and not connected, get connected! <i>Email us at <a href="mailto:TehamaGSA@tcpw.ca.gov">TehamaGSA@tcpw.ca.gov</a></i>
Volunteer Monitoring Program More Info: <a href="#">Antelope subbasin</a>   <a href="#">Corning Subbasin</a>	Volunteer your well to monitor groundwater levels, and gain insight into your own well operations. <a href="#">Link to learn more or sign up</a>
Landowner Recharge <a href="#">More info about groundwater recharge</a> <a href="#">More info about recharge projects in Tehama County</a>	Tehama GSA is always looking for ideas for recharge projects and landowners who want to help. <a href="#">Link to submit recharge ideas</a>



# FEE STUDY

SGMA FUNDING STRUCTURE  
UPDATES

# Tehama GSA – Annual GSP Implementation Fees

## Why Are Fees Needed?

2021-2026:  
\$19M in grants  
covered GSA costs.

2027-2042:  
Sustainable Fees are  
needed with no grant  
funds available.

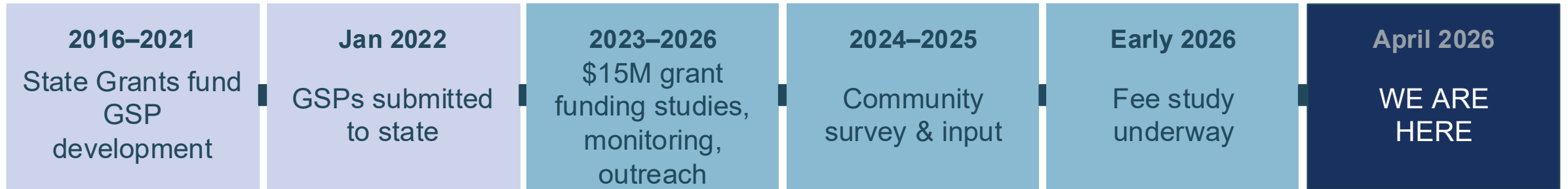


### 261 GSAs in California

- Medium;
- High; and
- Critically Over  
drafted subbasins.

Most GSAs have long  
term fees or charges in  
place to achieve SGMA  
compliance with local  
control.

# Tehama County SGMA Financial History



## In the next few months....

- **TODAY: Public Meetings**
- **APRIL–MAY 2026:** Final fee study recommendations presented to Commission and Board.
- **SUMMER 2026:** Public hearing and formal fee adoption process. You will be notified by mail and can formally comment or protest.
- **MID-2026:** Current state grants expire. Local fee must be in place to continue program.
- **2027:** Fees would first appear on property tax bills, if adopted.

# Public Input – What we've heard from you

## Venues for input

110+ Demand Management community survey responses

Stakeholder advisory working group meetings

Regular public comment at every Commission and Board meeting

Direct outreach to agricultural operators, domestic well owners, and ranchers

Public Meetings & Workshops

## Community wants:

- Keep costs low
- Protect small farms and domestic wells
- Use fair, proportional charges
- Maintain local control
- Be transparent — tell you what things cost



# Why We Can't Rely on Grants Forever

## The grant era is ending

- State grants (Prop 1 & 68) funded our plans — no local cost to landowners
- \$15 million in implementation grants have funded monitoring wells, modeling, and recharge studies
- These grants expire by mid-2026
- State law requires a stable local funding source — grants are not a permanent solution

## The alternative: State intervention

If we fail to fund a local plan, the State Water Board takes over:



### **Fees 5–10× higher**

Every dollar goes to state overhead — nothing funds local projects



### **No local benefit**

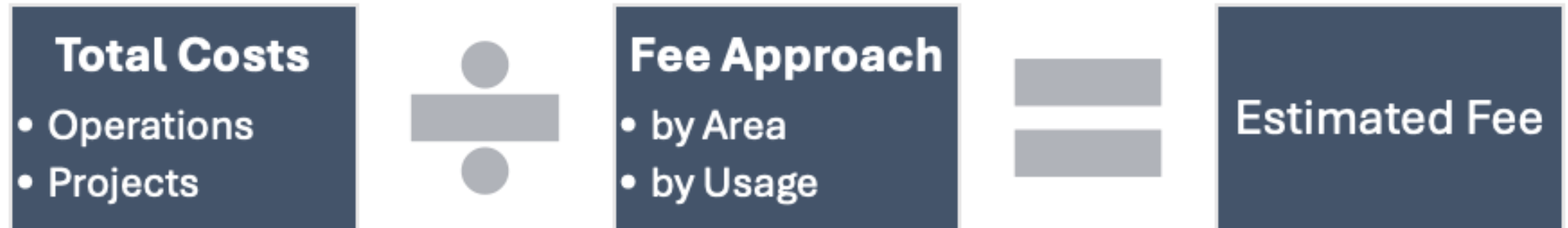
None of the money returns to Tehama County programs



### **Loss of local control**

State decides what happens here — not your elected Board

# Fee Development Process



# Your fee pays for two things, designed separately

## Projects & Management Actions (PMA) fee

*Fixing the problem*

---

### Overdraft subbasins only

Includes:

- Groundwater recharge projects
- Dry well mitigation — help when wells go dry
- Voluntary incentive programs for farmers
- Demand management programs (if needed)

## Administrative/Operations fee

*Keeping the lights on*

---

### District-wide *or* to all subbasins

Includes:

- Staff time to run the program
- Annual monitoring and reporting to the state
- Legal support and compliance
- Data management and model updates
- Five-year plan updates required by SGMA

# Where we are: options under study

## PMA: Option 1

Minimum programs budget

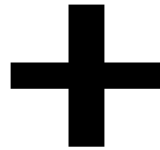
*Dry well mitigation + early voluntary projects*

OR

## PMA: Option 2

Full programs budget

*Adds demand management cost recovery*



## Admin/Ops: Option A

Flat parcel fee

*Same charge for every parcel, district-wide*

OR

## Admin/Ops: Option B

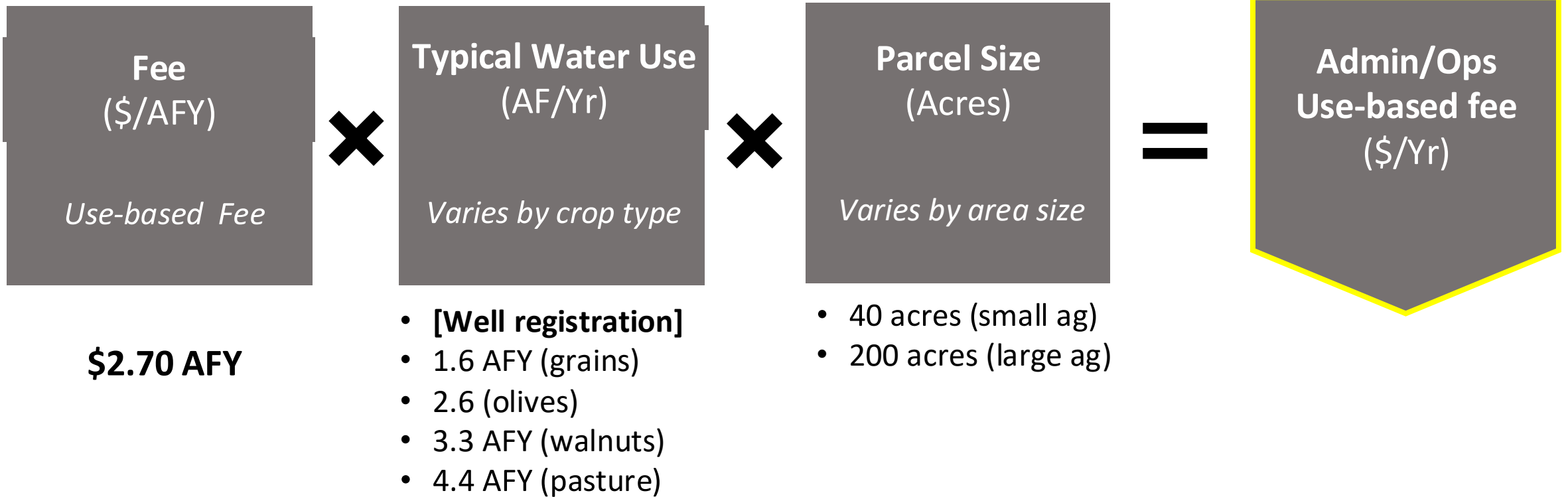
Volumetric use fee

*Charge based on estimated groundwater use*

**Total Costs = PMA Fee (1 or 2) + Admin/Ops Fee (A or B)**

# Calculating the Volumetric Fees | Admin/Ops

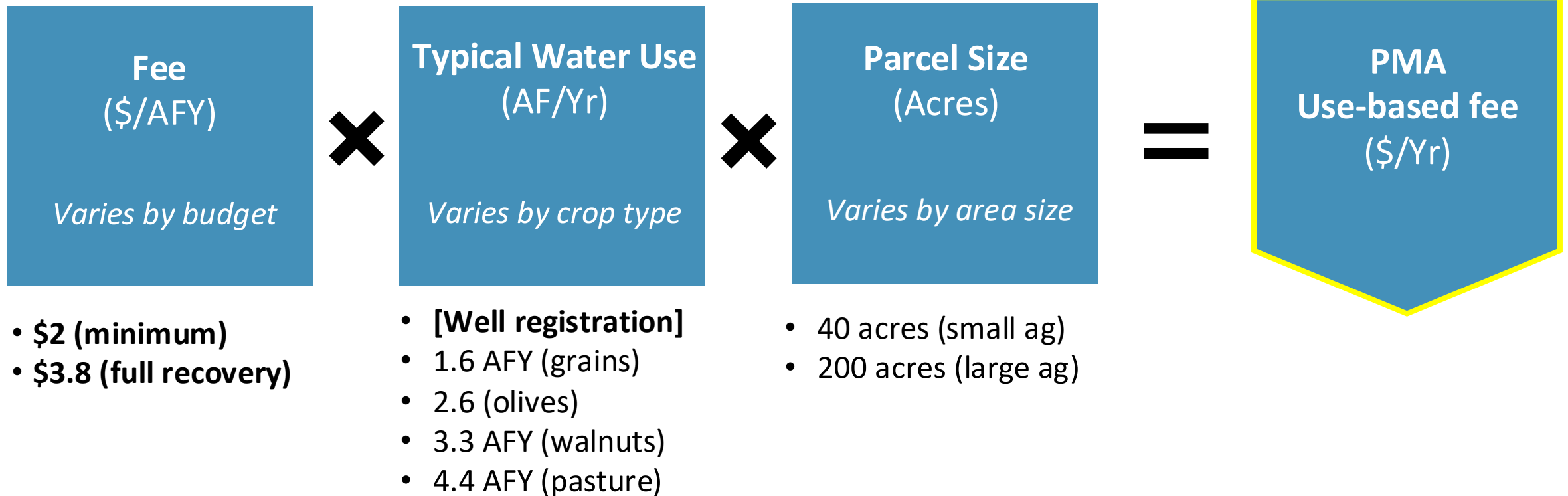
Admin/Ops Use-based fee option:



**Example:** 40 acres; growing olives  
(\$2.70) (2.6AFY) (40 acres) = \$280.8 annual Admin/Ops fee

# Calculating the Volumetric Fees | PMAs

PMA Use-based fee options (minimal or full budget)



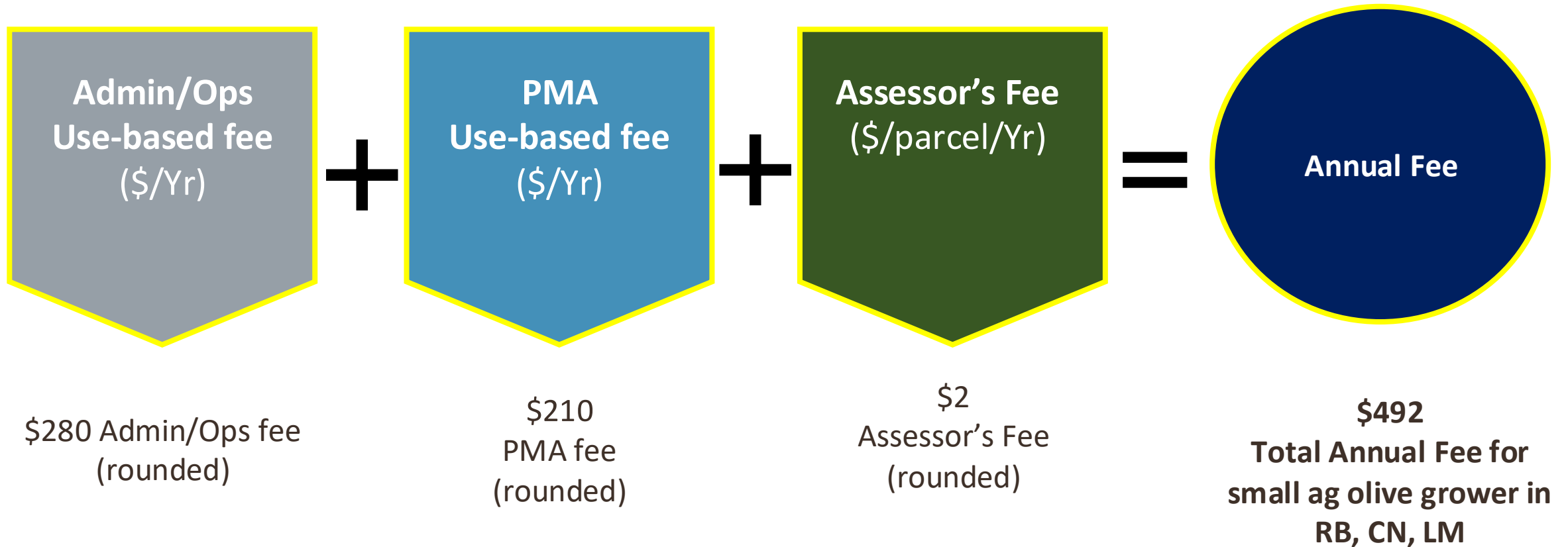
**Example:** 40 acres; growing olives; in overdrafted basin (CN, RB, LM);

using minimum budget

(\$2.00) (2.6 AFY) (40 acres) = \$208 annual PMA fee

# Calculating the Volumetric Fees | Totals

**Example:** 40 acres; growing olives; in overdrafted basin (RB, CN, LN); using minimum budget



*Preliminary estimates only — final figures expected in April/May (presented to Commission and Board)*

# What does this mean for you?

**⚠ ALL NUMBERS BELOW ARE PRELIMINARY ESTIMATES – NOT FINAL AMOUNTS**

User type	PMA fee (prelim.) Volumetric only, choosing b/w smaller or larger budget <i>(Overdrafted basins only)</i> ~\$2.00 AFY	Admin/Ops fee (prelim.) Choosing b/w based on parcels or volumetric	TOTAL (PMA + Admin/Ops) Approx. annual fee range <i>(Overdrafted basins only)</i> (Add \$2 Assessor's Fee)
Urban Residential	\$0 <i>(not irrigating)</i>	Parcel-Based: ~\$30-40/yr	~\$3 – \$40 per year
		or if volumetric: ~\$3-5+	
Rural Residential	\$0 <i>(not irrigating)</i>	Parcel-Based: same flat fee	~\$15 – \$40 per year
		or if volumetric: ~\$15-20+	
Commercial	~\$30-40+	Parcel-Based: same flat fee	\$60 – \$80 per year <i>(Lower in non-overdrafted basin)</i>
		or if volumetric: possibly ~\$30-40+	
Small agricultural operation (Ave. 40 acres)	For 40 acres: ~\$130-400/yr (crop type varies)	Parcel-Based: same flat fee	~\$380 – \$800 per year (40 acres, crop type varies) <i>(Lower in non-overdrafted basin)</i>
		or if volumetric: (40 acres: ~\$175-475/yr)	
Large agricultural operation (Ave. 200+ acres)	For 200 acres: ~\$640–1,800/yr (crop type varies)	Parcel-Based: same flat fee	~\$670 – \$4175 per year (200 acres: crop type varies) <i>(Lower in non-overdrafted basin)</i>
		or if volumetric: (200 acres: ~\$865–2,375/yr)	

***These are ballpark ranges only. Final amounts depend on fee method chosen and fee study results***

# Your chance to weigh in — don't miss it

<b>1</b>	<b>Register your well now</b> Your well registration data determines your fee estimate. Unregistered wells get charged based on zoning assumptions, not actual use. Register at <a href="https://tehamacountywater.org/well-registration/">tehamacountywater.org/well-registration/</a>	<b>Ongoing</b>
<b>2</b>	<b>Public workshops</b> Dedicated sessions to present fee options, answer questions, and collect public input before the Board votes.	<b>April 1 &amp; 2, 2026</b>
<b>3</b>	<b>Board of Directors: Fee Report Approval</b> Board – fee report	<b>April 2026</b>
<b>4</b>	<b>Public mailers</b> All residents receive mailers on approved fee report	<b>May 2026</b>
<b>5</b>	<b>Board of Directors: public hearing, BOD vote</b> Public hearing required. You can formally comment or protest before any fee is adopted.	<b>June 2026</b>
<b>6</b>	<b>If adopted, you'll be notified</b> All affected parties receive a written notice explaining their fee estimate and how to appeal.	<b>After adoption</b>

# What's Next and Staying Involved

## Upcoming Tehama County Meetings

- **April 8** - Groundwater Commission  
*8:30 am in Board Chambers Room*  
*727 Oak St., Red Bluff*
- **April 23** - Flood Control Board of Directors  
*10:00 am in Board Chambers Room*  
*727 Oak St., Red Bluff*

## Other Upcoming Dates

**June 30** - Mandatory well registration deadline

## Connect with us

- Join the Interested Parties email list at <https://tehamacountywater.org/gsa/> or by emailing [TehamaGSA@tcpw.ca.gov](mailto:TehamaGSA@tcpw.ca.gov)
- Follow Tehama County Flood Control & Water Conservation District on Facebook
- District Staff office hours:  
Mon-Thur, 7:30a-4:30p  
1509 Schwab Street, Red Bluff



# Thank You!

# Q&A/Discussion

- Stick around for more discussion
- Contact us: (530) 690-0700 or [TehamaGSA@tcpw.ca.gov](mailto:TehamaGSA@tcpw.ca.gov)

## Reminders:

- Presentation slides & a recording of this meeting will be posted to [tehamacountywater.org/meetings/](http://tehamacountywater.org/meetings/)



# Participation Protocols

*Today we are...*

- Aiming to hear from everyone – please be concise
- Working toward shared understanding – ask questions and listen to understand
- Capturing the public's thoughts
  - Use the mic
  - Submit written comment
  - Email [tehamagsa@tcpw.ca.gov](mailto:tehamagsa@tcpw.ca.gov)